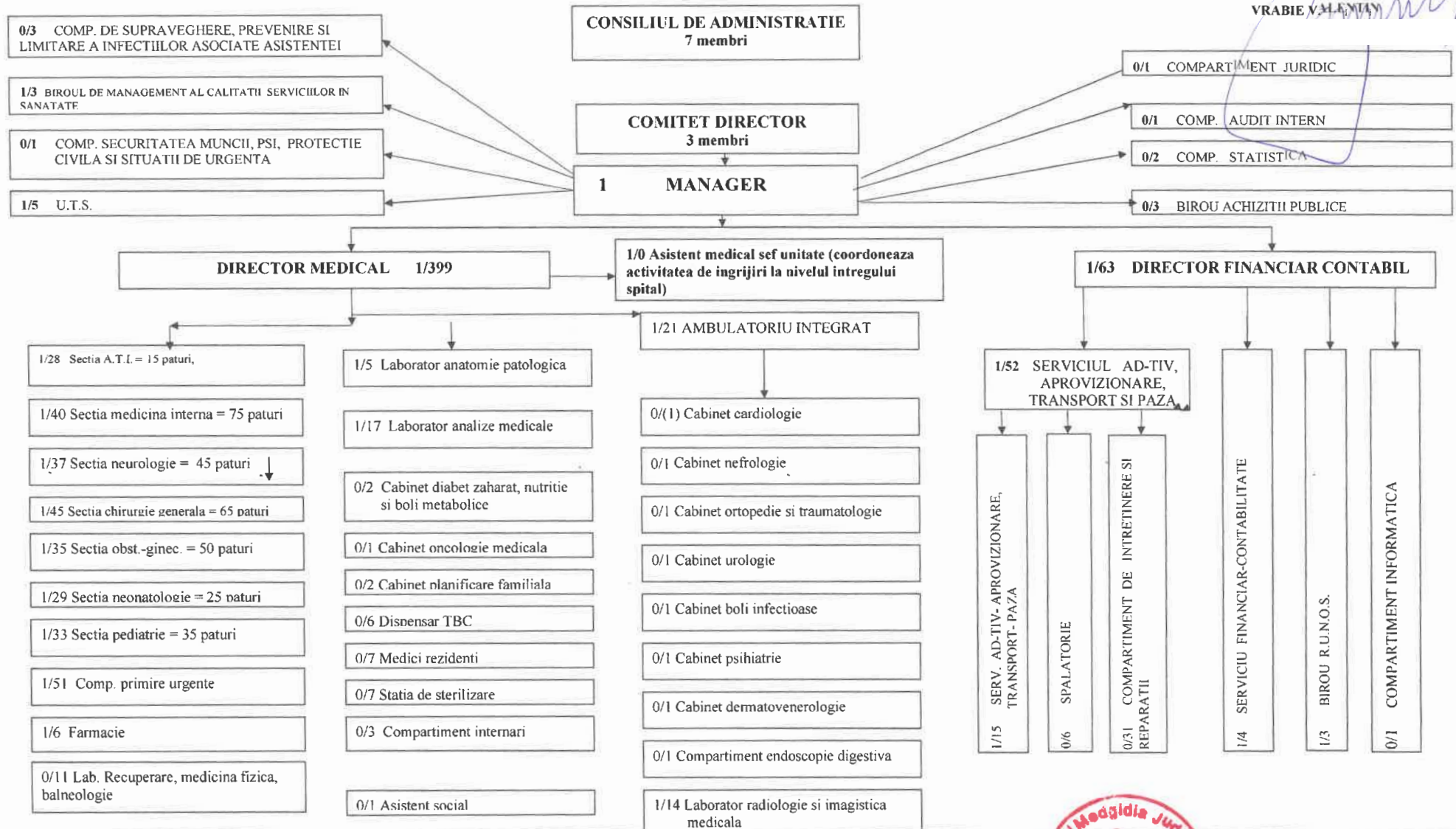


ORGANIGRAMA

APROBAT,
PRIMARIA MUNICIPIULUI MEDGIDIA
PRIMAR
VRABIE V. M. (MAY)



LEGENDA

POSTURI APROBATE:
487, din care:

- FNU/ASS = 472
- din care: = 66
- medici = 66
- alt pers. san. superior (psiholog, fizician, Farmacist, biolog, Kinoterapeut) = 13
- pers. san. mediu (asistenti medicali, Registratori medicali, statisticieni) = 198
- pers. aux. sanitar (infirmiere, Brancardieri, Spalatoresc) = 127
- Si gardorohier = 26
- pers. TESA = 4
- pers. management = 5
- pers. paza = 5
- pers. intretinere si deservire si soferi = 33

BUGET DE STAT = 15
din care:

- medici = 9
- pers. mediu san. = 6



MANAGER,
Ș. L. DR. OPREA DOREL

NR. 731 / 18.01.2023

STAT DE FUNCTII
la data de 1.01.2023

NR. CRT	NR. CRT	FUNCTIA, GRADUL SAU TREAPTA PROFESIONALA CONFORM Legii nr. 153/2017	Grad/ Gradatia	SPECIALITATEA	NIVEL STUDII	CUANTUM POST	SALARIUL DE BAZA LEGEA NR. 153/2017 DEC.2018	spor doctorat	SALARIUL DE BAZA LEGEA NR. 153/2017 IAN 2023	NATURA POSTULUI
0	0	1	2	3	4	5	6	7	8	9
		COMITET DIRECTOR - SPITAL - 310 DE PATURI								
1	1	Manager	grad II	medic primar chirurgie generala	S	1	8,125		17,222	POST OCUPAT
2	2	Director Medical	5	medic primar obstetrica-ginecologie	S	1	6,026		16,401	POST OCUPAT - interimar
3	3	Director financiar-contabil	grad II	studii economice	S	1	6,875		7,169	POST OCUPAT - interimar
		TOTAL COMITET DIRECTOR				3	21026		40792	
		ASISTENT MEDICAL SEF UNITATE								
4	1	Asistent medical sef unitate	grad II	medicina generala	PL	1	4,938		6,371	POST VACANT - numit cu delegare
		TOTAL ASISTENT MEDICAL SEF UNITATE				1	4,938		6,371	
		ASISTENT SOCIAL								
5	1	Asistent social	baza	asistență socială	S	1	2,609		4,394	POST VACANT
		TOTAL ASISTENT SOCIAL				1	2,609		4,394	
		SECTIA ATI = 15 PATURI, DIN CARE: COMPARTIMENT PENTRU COPII = 4 PATURI								
6	1	medic sef sectie medic specialist	4	ATI	S	1	5,963		13,477	POST VACANT - numit cu delegare
7	2	coordonator sectie	2	ATI	S	1	5,542		12,520	POST OCUPAT
8	3	medic specialist	4	ATI	S	1	5,679		12,835	POST OCUPAT
9	4	medic specialist	4	ATI	S	1	5,679		12,835	POST OCUPAT
10	5	medic specialist	2	ATI	S	1	3,978		8,241	POST VACANT
11	6	medic rezident an V	2	ATI	S	1	3,978		8,241	POST OCUPAT
		medic rezident anul III	1	ATI	S		3,432		6,700	POST OCUPAT
12	7	asistent medical principal sef	5	medicina generala	PL	1	4,304		6,641	POST OCUPAT
13	8	asistent medical principal	5	asistenta medicala generala	S	1	4,304		5,775	POST OCUPAT
14	9	asistent medical principal	5	asistenta medicala generala	S	1	4,304		5,775	POST OCUPAT
15	10	asistent medical principal	5	asistenta medicala generala	S	1	4,304		5,775	POST OCUPAT
16	11	asistent medical principal	5	medicina generala	SSD	1	3,777		5,434	POST OCUPAT
17	12	asistent medical principal	5	medicina generala	PL	1	3,699		5,184	POST OCUPAT
18	13	asistent medical principal	5	medicina generala	PL	1	3,699		5,184	POST OCUPAT
19	14	asistent medical principal	5	medicina generala	PL	1	3,699		5,184	POST OCUPAT
20	15	asistent medical principal	5	medicina generala	PL	1	3,699		5,184	POST OCUPAT

21	16	asistent medical principal	5	medicina generala	PL	1	3,699	5,184	POST OCUPAT
22	17	asistent medical principal	5	medicina generala	PL	1	3,699	5,184	POST OCUPAT
23	18	asistent medical principal	5	medicina generala	PL	1	3,699	5,184	POST OCUPAT
24	19	asistent medical principal	5	medicina generala	PL	1	3,699	5,184	POST OCUPAT
25	20	asistent medical principal	5	medicina generala	PL	1	3,699	5,184	POST OCUPAT
26	21	asistent medical	baza	medicina generala	PL	1	2,678	4,001	POST OCUPAT
27	22	infirmiera	5		M/G	1	2,310	4,347	POST OCUPAT
28	23	infirmiera	3		M/G	1	2,199	4,136	POST OCUPAT
29	24	infirmiera	4		M/G	1	2,254	4,241	POST OCUPAT
30	25	infirmiera	4		M/G	1	2,254	4,241	POST OCUPAT
31	26	infirmiera	5		M/G	1	2,310	4,347	POST OCUPAT
32	27	infirmiera	3		M/G	1	2,199	4,136	POST OCUPAT
33	28	ingrijitoare	3		M/G	1	2,167	3,531	POST OCUPAT
34	29	ingrijitoare	5		M/G	1	2,275	3,711	POST OCUPAT
		TOTAL ATI				29	109181	0	187596
		UNITATE DE TRANSFUZII SANGUINE							
35	1	medic primar coordonator	3	medicina de laborator	S	1	5,602	15,246	POST OCUPAT
		asistent medical principal							
36	2	coordonator UTS	5	asistenta medicala generala	S	1	4,121	5,913	POST OCUPAT
37	3	asistent medical principal	5	asistenta medicala generala	S	1	3,583	5,142	POST OCUPAT
38	4	asistent medical principal	5	asistenta medicala generala	S	1	3,583	5,142	POST OCUPAT
39	5	asistent medical principal	5	medicina generala	PL	1	3,132	4,859	POST OCUPAT
40	6	asistent medical	5	medicina generala	PL	1	2,886	4,796	POST OCUPAT
		TOTAL U.T.S.				6	22907	0	41098
		SECTIA MEDICINA INTERNA = 75 PATURI, DIN CARE:							
		- Comp.diabet zaharat, nutritie si boli metabolice=5 paturi, Comp.reumatologie=5 paturi, Comp.recup.,med.fiz., baln.=5 paturi, Comp.endocrinologie=5 paturi, Comp.cardiologie=5 paturi							
41	1	medic sef sectie	5	medicina interna	S	1	5,602	15,246	POST VACANT - numit cu delegare
42	2	medic primar	4	medicina interna	S	1	5,469	14,883	POST OCUPAT
43	3	medic primar	5	medicina interna	S	1	5,605	15,256	POST OCUPAT
44	4	medic primar	5	medicina interna	S	1	5,605	15,256	POST OCUPAT
45	5	medic primar	3	medicina interna	S	1	5,602	15,246	POST OCUPAT
46	6	asistent medical principal	5	medicina generala	PL	1	4,304	5,913	POST OCUPAT
		asistent medical principal							
47	7	sef	5	medicina generala	PL	1	4,120	5,913	POST OCUPAT
48	8	asistent medical principal	5	asistenta medicala generala	S	1	3,583	5,142	POST OCUPAT
49	9	asistent medical principal	5	medicina generala	S	1	3,583	5,142	POST OCUPAT
50	10	asistent medical principal	5	medicina generala	PL	1	3,132	4,859	POST OCUPAT
51	11	asistent medical principal	5	medicina generala	PL	1	3,132	4,859	POST OCUPAT
52	12	asistent medical principal	5	medicina generala	PL	1	3,132	4,859	POST OCUPAT
53	13	asistent medical principal	5	medicina generala	PL	1	3,132	4,859	POST OCUPAT
54	14	asistent medical	4	medicina generala	PL	1	2,758	4,679	POST OCUPAT
55	15	asistent medical principal	5	medicina generala	PL	1	3,132	4,859	POST OCUPAT
56	16	asistent medical principal	5	medicina generala	PL	1	3,132	4,859	POST OCUPAT
57	17	asistent medical principal	5	medicina generala	PL	1	3,132	4,859	POST OCUPAT
58	18	asistent medical principal	5	medicina generala	PL	1	3,132	4,859	POST OCUPAT
59	19	asistent medical principal	4	medicina generala	PL	1	3,055	4,740	POST OCUPAT
60	20	asistent medical principal	4	medicina generala	PL	1	3,055	4,740	POST OCUPAT
61	21	asistent medical principal	4	medicina generala	PL	1	3,055	4,740	POST OCUPAT
62	22	asistent medical principal	5	medicina generala	PL	1	3,132	4,859	POST OCUPAT
63	23	asistent medical principal	5	medicina generala	PL	1	3,132	4,859	POST OCUPAT
64	24	asistent medical	1	medicina generala	PL	1	2,440	4,139	POST OCUPAT
65	25	infirmiera	4		M/G	1	2,080	4,133	POST OCUPAT
66	26	infirmiera	4		M/G	1	2,080	4,133	POST OCUPAT

67	27	infirmiera	5		M/G	1	2,133		4,237	POST OCUPAT
68	28	infirmiera	5		M/G	1	2,133		4,237	POST VACANT
69	29	infirmiera	4		M/G	1	2,080		4,133	POST OCUPAT
70	30	infirmiera	4		M/G	1	2,080		4,133	POST OCUPAT
71	31	infirmiera	3		M/G	1	2,030		4,032	POST OCUPAT
72	32	infirmiera	4		M/G	1	2,080		4,133	POST OCUPAT
73	33	ingrijitoare	3		M/G	1	2,000		3,437	POST OCUPAT
74	34	ingrijitoare	2		M/G	1	1,905		3,273	POST OCUPAT
75	35	ingrijitoare	4		M/G	1	2,050		3,523	POST OCUPAT
76	36	ingrijitoare	baza		M/G	1	1,900		3,000	POST OCUPAT
77	37	ingrijitoare	4		M/G	1	2,050		3,523	POST OCUPAT
COMPARTIMENT DIABET ZAHARAT, NUTRITIE SI BOLI METABOLICE = 5 PATURI										
78	38	medic specialist	2		S	1	4,427		10,952	POST OCUPAT
COMPARTIMENT REUMATOLOGIE = 5 PATURI										
79	39	medic primar	5	reumatologie	S	1	5,605		15,256	POST OCUPAT
COMPARTIMENT ENDOCRINOLOGIE = 5 PATURI										
80	40	medic primar	3	endocrinologie	S	1	5,335		14,520	POST OCUPAT
COMPARTIMENT CARDIOLOGIE = 5 PATURI										
81	41	medic specialist	2	cardiologie	S	1	4,427		10,952	POST OCUPAT
TOTAL MEDICINA INTERNA						41	135,551		271,232	
SECTIA NEUROLOGIE = 45 PATURI										
82	1	medic sef sectie	5	neurologie	S	1	5,885		16,019	POST VACANT - numit cu delegare
83	2	medic specialist	4	neurologie	S	1	4,648		11,500	POST OCUPAT
84	3	medic primar	5	neurologie	S	1	5,605		15,256	POST OCUPAT
85	4	medic primar	5	neurologie	S	1	5,605		15,256	POST OCUPAT
86	5	asistent medical principal	5	asistenta medicala generala	S	1	4,120		5,913	POST OCUPAT
87	6	asistent medical principal	5	asistenta medicala generala	S	1	3,583		5,142	POST OCUPAT
88	7	asistent medical principal	5	asistenta medicala generala	S	1	3,583		5,142	POST OCUPAT
89	8	asistent medical principal	5	medicina generala	PL	1	3,132		4,859	POST OCUPAT
90	9	asistent medical principal	5	medicina generala	PL	1	3,132		4,859	POST OCUPAT
91	10	asistent medical principal	5	pediatrie	PL	1	3,132		4,859	POST OCUPAT
92	11	asistent medical principal	5	medicina generala	PL	1	3,132		4,859	POST OCUPAT
93	12	asistent medical principal	5	medicina generala	PL	1	3,132		4,859	POST OCUPAT
94	13	asistent medical principal	5	pediatrie	PL	1	3,132		4,859	POST OCUPAT
95	14	asistent medical principal	5	pediatrie	PL	1	3,132		4,859	POST OCUPAT
96	15	asistent medical principal	5	pediatrie	PL	1	3,132		4,859	POST OCUPAT
97	16	asistent medical principal	5	obstetrica ginecologie	PL	1	3,132		4,859	POST OCUPAT
98	17	asistent medical principal	5	medicina generala	PL	1	3,132		4,859	POST OCUPAT
99	18	asistent medical principal	5	medicina generala	PL	1	3,132		4,859	POST OCUPAT
100	19	asistent medical principal	5	medicina generala	PL	1	3,132		4,859	POST OCUPAT
101	20	asistent medical	baza	medicina generala	PL	1	2,270		3,850	POST OCUPAT
102	21	asistent medical	4	medicina generala	PL	1	2,758		4,679	POST OCUPAT
103	22	asistent medical	4	medicina generala	PL	1	2,758		4,679	POST OCUPAT
104	23	infirmiera	3		M/G	1	2,030		4,032	POST OCUPAT
105	24	infirmiera	1		M/G	1	1,900		3,673	POST OCUPAT
106	25	infirmiera	4		M/G	1	2,080		4,133	POST OCUPAT
107	26	infirmiera	5		M/G	1	2,133		4,237	POST OCUPAT
108	27	infirmiera	4		M/G	1	2,080		4,133	POST OCUPAT
109	28	infirmiera	5		M/G	1	2,133		4,237	POST OCUPAT
110	29	infirmiera	5		M/G	1	2,133		4,237	POST VACANT

111	30	infirmiera	5		M/G	1	2,133		4,237	POST OCUPAT
112	31	infirmiera	5		M/G	1	2,133		4,237	POST OCUPAT
113	32	infirmiera	4		M/G	1	2,080		4,133	POST OCUPAT
114	33	infirmiera	5		M/G	1	2,133		4,237	POST VACANT
115	34	infirmiera	3		M/G	1	2,030		4,032	POST OCUPAT
116	35	infirmiera	5		M/G	1	2,133		4,237	POST OCUPAT
117	36	ingrijitoare	3		M/G	1	2,000		3,437	POST OCUPAT
118	37	ingrijitoare	5		M/G	1	2,102		3,612	POST OCUPAT
119	38	ingrijitoare	5		M/G	1	2,102		3,612	POST OCUPAT
		TOTAL NEUROLOGIE				38	111,734		210,200	
SECTIA CHIRURGIE GENERALA = 65 PATURI, DIN CARE: 5 PATURI ORL, 5 PATURI OFTALMOLOGIE, 15 PATURI ORTOPEDIE-TRAUMATOLOGIE										
120	1	medic sef sectie	5	chirurgie generala	S	1	5,885	1,040	16,019	POST OCUPAT - numit cu delegare
121	2	medic primar	3	chirurgie generala	S	1	5,335		14,520	POST OCUPAT
122	3	medic primar	5	chirurgie generala	S	1	5,605		15,256	POST OCUPAT
123	4	medic primar	5	chirurgie generala	S	1	5,605		15,256	POST OCUPAT
		COMP. OFTALMOLOGIE = 5 PATURI								
124	5	medic primar	4	oftalmologie	S	1	5,469		14,883	POST OCUPAT
		COMP. O.R.L. = 5 PATURI								
125	6	medic specialist	2	otorinolaringologie	S	1	4,427		10,952	POST OCUPAT
		COMP. ORTOPEDIE-TRAUMAT. = 15 PATURI								
126	7	medic primar	5	ortopedie-traumatologie	S	1	5,605	1,040	15,256	POST OCUPAT
127	8	asistent medical principal coordonator bloc operator	5	asistenta medicala generala	S	1	3,583		5,913	POST OCUPAT
128	9	asistent medical	2	medicina generala	S	1	2,704		4,539	POST OCUPAT
129	10	asistent medical principal	5	medicina generala	PL	1	3,132		4,859	POST OCUPAT
130	11	asistent medical	5	medicina generala	PL	1	2,827		4,796	POST OCUPAT
131	12	asistent medical principal	5	medicina generala	PL	1	3,132		4,859	POST OCUPAT
132	13	asistent medical principal	5	medicina generala	PL	1	3,132		4,859	POST OCUPAT
133	14	asistent medical principal	5	medicina generala	PL	1	3,132		4,859	POST OCUPAT
134	15	asistent medical principal	5	medicina generala	PL	1	3,132		4,859	POST OCUPAT
135	16	asistent medical principal	5	medicina generala	PL	1	3,132		4,859	POST OCUPAT
136	17	asistent medical principal	4	medicina generala	PL	1	3,055		4,740	POST OCUPAT
137	18	asistent medical principal	5	medicina generala	PL	1	3,132		4,859	POST OCUPAT
138	19	asistent medical principal	5	medicina generala	PL	1	3,132		4,859	POST OCUPAT
139	20	asistent medical principal	5	medicina generala	PL	1	3,132		4,859	POST OCUPAT
140	21	asistent medical principal	5	medicina generala	PL	1	3,132		4,859	POST OCUPAT
141	22	asistent medical principal	5	medicina generala	PL	1	3,132		4,859	POST OCUPAT
142	23	asistent medical principal	5	medicina generala	PL	1	3,132		4,859	POST OCUPAT
143	24	asistent medical principal	4	medicina generala	PL	1	3,055		4,740	POST OCUPAT
144	25	asistent medical principal	4	medicina generala	PL	1	3,055		4,740	POST OCUPAT
145	26	asistent medical principal	4	medicina generala	PL	1	3,055		4,740	POST OCUPAT
146	27	asistent medical principal	5	medicina generala	PL	1	3,132		4,859	POST OCUPAT
147	28	asistent medical principal	5	medicina generala	PL	1	3,132		4,859	POST OCUPAT
148	29	asistent medical	5	medicina generala	PL	1	2,827		4,796	POST OCUPAT
149	30	infirmiera	5		M/G	1	2,133		4,237	POST OCUPAT
150	31	infirmiera	4		M/G	1	2,080		4,133	POST OCUPAT
151	32	infirmiera	5		M/G	1	2,133		4,237	POST VACANT
152	33	infirmiera	4		M/G	1	2,080		4,133	POST OCUPAT
153	34	infirmiera	4		M/G	1	2,080		4,133	POST OCUPAT
154	35	infirmiera	5		M/G	1	2,133		4,237	POST OCUPAT
155	36	infirmiera	5		M/G	1	2,133		4,237	POST OCUPAT
156	37	infirmiera	4		M/G	1	2,080		4,133	POST OCUPAT

157	38	infirmiera	3		M/G	1	2,030		4,032	POST OCUPAT
158	39	infirmiera	2		M/G	1	1,933		3,839	POST OCUPAT
159	40	brancardier	3		M/G	1	2,000		3,557	POST VACANT
160	41	ingrijitoare	3		M/G	1	2,000		3,437	POST OCUPAT
161	42	ingrijitoare	5		M/G	1	2,102		3,612	POST OCUPAT
162	43	ingrijitoare	5		M/G	1	2,102		3,612	POST OCUPAT
163	44	ingrijitoare	3		M/G	1	2,000		3,437	POST OCUPAT
164	45	ingrijitoare	5		M/G	1	2,102		3,612	POST OCUPAT
165	46	ingrijitoare	3		M/G	1	2,000		3,437	POST OCUPAT
		TOTAL CHIRURGIE GENERALA				46	141,061	2,080	275,227	
SECTIA OBSTETRICA-GINECOLOGIE = 50 PATURI										
166	1	medic sef sectie	5	obstetrica ginecologie	S	1	6,938	1,040	16,019	POST OCUPAT
167	2	medic primar	5	obstetrica ginecologie	S	1	5,605		15,256	POST VACANT
168	3	medic primar	4	obstetrica ginecologie	S	1	5,469		14,883	POST OCUPAT
169	4	medic primar	5	obstetrica ginecologie	S	1	5,605		15,256	POST VACANT
170	5	coordonator medic specialist asistent medical principal	3	obstetrica ginecologie	S	1	4,881		12,075	POST OCUPAT - numit cu delegare
171	6	sef	4	generalist	PL	1	4,120		5,913	POST OCUPAT
172	7	moasa principala	5	moasa	S	1	3,583		5,142	POST OCUPAT
173	8	moasa principala	5	moasa	S	1	3,583		5,142	POST OCUPAT
174	9	moasa principala	5	moasa	S	1	3,583		5,142	POST OCUPAT
175	10	moasa principala	5	moasa	S	1	3,583		5,142	POST OCUPAT
176	11	moasa	3	moasa	S	1	2,839		4,766	POST OCUPAT
177	12	moasa	2	moasa	S	1	2,704		4,539	POST VACANT
178	13	asistent medical principal	5	asistenta medicala generala	S	1	3,583		5,142	POST OCUPAT
179	14	asistent medical principal	4	medicina generala	SSD	1	3,227		4,801	POST OCUPAT
180	15	asistent medical principal	5	obstetrica ginecologie	PL	1	3,132		4,859	POST OCUPAT
181	16	asistent medical principal	5	obstetrica ginecologie	PL	1	3,132		4,859	POST OCUPAT
182	17	asistent medical principal	5	obstetrica ginecologie	PL	1	3,132		4,859	POST OCUPAT
183	18	asistent medical principal	5	obstetrica ginecologie	PL	1	3,132		4,859	POST OCUPAT
184	19	asistent medical principal	4	generalist	PL	1	3,055		4,740	POST OCUPAT
185	20	asistent medical principal	5	generalist	PL	1	3,132		4,859	POST OCUPAT
186	21	asistent medical	4	medicina generala	PL	1	2,758		4,679	POST OCUPAT
187	22	infirmiera	5		M/G	1	2,133		4,237	POST OCUPAT
188	23	infirmiera	5		M/G	1	2,133		4,237	POST OCUPAT
189	24	infirmiera	5		M/G	1	2,133		4,237	POST OCUPAT
190	25	infirmiera	5		M/G	1	2,133		4,237	POST OCUPAT
191	26	infirmiera	5		M/G	1	2,133		4,237	POST OCUPAT
192	27	infirmiera	5		M/G	1	2,133		4,237	POST OCUPAT
193	28	infirmiera	5		M/G	1	2,133		4,237	POST OCUPAT
194	29	infirmiera	baza		M/G	1	1,900		3,452	POST OCUPAT
195	30	infirmiera	5		M/G	1	2,133		4,237	POST OCUPAT
196	31	infirmiera	4		M/G	1	2,080		4,133	POST OCUPAT
197	32	ingrijitoare	4		M/G	1	2,050		3,523	POST OCUPAT
198	33	ingrijitoare	4		M/G	1	2,050		3,523	POST OCUPAT
199	34	ingrijitoare	4		M/G	1	2,050		3,523	POST OCUPAT
200	35	ingrijitoare	2		M/G	1	1,905		3,273	POST OCUPAT
201	36	ingrijitoare	5		M/G	1	2,102		3,612	POST OCUPAT
		TOTAL OBSTETRICA-GINECOLOGIE				36	111,977	1,040	211,867	
SECTIA NEONATOLOGIE = 25 PATURI, DIN CARE: COMPARTIMENT PREMATURI = 4 PATURI										

202	1	medic sef sectie	5	neonatologie	S	1	5,128	,688	POST VACANT- numita cu delegare
203	2	medic specialist	5	neonatologie	S	1	4,883	12,083	POST OCUPAT
204	3	medic specialist	2	neonatologie	S	1	4,427	10,952	POST VACANT
		medic rezident anul III	baza	neonatologie	S		3,069	6,700	POST OCUPAT
		medic rezident anul I	baza	neonatologie	S		2482	5700	POST OCUPAT
205	4	psiholog specialist	5	psihologie	S	1	4,001	6,351	POST OCUPAT
206	5	asistent medical principal sef	5	medicina generala	PL	1	4,304	5,913	POST OCUPAT
207	6	asistent medical principal	5	medicina generala	PL	1	3,132	4,859	POST OCUPAT
208	7	asistent medical principal	4	medicina generala	PL	1	3,055	4,740	POST OCUPAT
209	8	asistent medical principal	5	medicina generala	PL	1	3,132	4,859	POST OCUPAT
210	9	asistent medical principal	5	medicina generala	PL	1	3,132	4,859	POST OCUPAT
211	10	asistent medical principal	5	medicina generala	PL	1	3,132	4,859	POST OCUPAT
212	11	asistent medical principal	5	pediatrie	PL	1	3,132	4,859	POST OCUPAT
213	12	asistent medical principal	5	medicina generala	PL	1	3,132	4,859	POST OCUPAT
214	13	asistent medical principal	5	medicina generala	PL	1	3,132	4,859	POST OCUPAT
215	14	asistent medical principal	5	medicina generala	PL	1	3,132	4,859	POST OCUPAT
216	15	asistent medical	4	medicina generala	PL	1	2,758	4,679	POST OCUPAT
217	16	asistent medical	5	medicina generala	PL	1	2,827	4,796	POST OCUPAT
218	17	asistent medical	2	medicina generala	PL	1	2,563	4,346	POST OCUPAT
219	18	asistent medical	5	medicina generala	PL	1	2,827	4,796	POST OCUPAT
220	19	asistent medical	4	medicina generala	PL	1	2,758	4,679	POST OCUPAT
221	20	asistent medical	5	medicina generala	PL	1	2,827	4,796	POST OCUPAT
222	21	asistent medical	3	medicina generala	PL	1	2,690	4,564	POST OCUPAT
223	22	infirmiera	baza		M/G	1	1,900	3,452	POST OCUPAT
224	23	infirmiera	5		M/G	1	2,133	4,237	POST OCUPAT
225	24	infirmiera	4		M/G	1	2,080	4,133	POST OCUPAT
226	25	infirmiera	5		M/G	1	2,133	4,237	POST OCUPAT
227	26	infirmiera	5		M/G	1	2,133	4,237	POST OCUPAT
228	27	infirmiera	2		M/G	1	1,933	3,839	POST OCUPAT
229	28	infirmiera	4		M/G	1	2,080	4,133	POST OCUPAT
230	29	ingrijitoare	5		M/G	1	2,102	3,612	POST VACANT
231	30	ingrijitoare	5		M/G	1	2,102	3,612	POST OCUPAT
		TOTAL NEONATOLOGIE				30	94,251	172,147	
SECTIA PEDIATRIE = 35 PATURI, DIN CARE: COMPARTIMENT RECUPERARE PEDIATRICA = 5 PATURI									
232	1	medic sef sectie	3	pediatrie	S	1	4,881	12,075	POST VACANT - numita cu delegare
233	2	medic specialist	3	pediatrie	S	1	4,881	12,075	POST OCUPAT
234	3	medic specialist	3	pediatrie	S	1	4,648	11,500	POST OCUPAT
235	4	medic specialist	2	pediatrie	S	1	4,427	10,952	POST OCUPAT
		medic rezident anul V	1	pediatrie	S		3,929	7,848	POST OCUPAT
236	5	asistent medical principal sef	4	generalist	PL	1	4,120	5,913	POST OCUPAT
237	6	asistent medical principal	4	generalist	PL	1	3,055	4,740	POST OCUPAT
238	7	asistent medical principal	5	asistenta medicala generala	S	1	3,583	5,142	POST OCUPAT
239	8	asistent medical principal	5	asistenta medicala generala	S	1	3,583	5,142	POST OCUPAT
240	9	asistent medical principal	5	medicina generala	S	1	3,583	5,142	POST OCUPAT
241	10	asistent medical	3	asistenta medicala generala	PL	1	2,690	4,564	POST OCUPAT
242	11	asistent medical	2	medicina generala	PL	1	2,563	4,346	POST OCUPAT
243	12	asistent medical principal	5	pediatrie	PL	1	3,132	4,859	POST OCUPAT
244	13	asistent medical	baza	pediatrie	PL	1	2,270	3,850	POST OCUPAT
245	14	asistent medical principal	5	medicina generala	PL	1	3,132	4,859	POST OCUPAT
246	15	asistent medical principal	5	pediatrie	PL	1	3,132	4,859	POST OCUPAT
247	16	asistent medical principal	5	generalist	PL	1	3,132	4,859	POST OCUPAT
248	17	asistent medical	2	medicina generala	PL	1	2,563	4,346	POST OCUPAT

249	18	asistent medical	3	nutritie si dietetica	PL	1	2,690	4,564	POST OCUPAT
250	19	asistent medical principal	4	dietetica si nutritie	PL	1	3,055	4,740	POST OCUPAT
251	20	infirmiera	5		M/G	1	2,133	4,237	POST OCUPAT
252	21	infirmiera	2		M/G	1	1,933	3,839	POST OCUPAT
253	22	infirmiera	4		M/G	1	2,080	4,133	POST OCUPAT
254	23	infirmiera	5		M/G	1	2,133	4,237	POST OCUPAT
255	24	infirmiera	4		M/G	1	2,080	4,133	POST OCUPAT
256	25	infirmiera	5		M/G	1	2,133	4,237	POST OCUPAT
257	26	infirmiera	5		M/G	1	2,133	4,237	POST OCUPAT
258	27	infirmiera	4		M/G	1	2,080	4,133	POST OCUPAT
259	28	infirmiera	3		M/G	1	2,030	4,032	POST OCUPAT
260	29	infirmiera	5		M/G	1	2,133	4,237	POST OCUPAT
261	30	infirmiera	2		M/G	1	1,933	3,839	POST OCUPAT
262	31	ingrijitoare	5		M/G	1	2,102	3,612	POST OCUPAT
263	32	ingrijitoare	4		M/G	1	2,050	3,523	POST OCUPAT
264	33	ingrijitoare	5		M/G	1	2,102	3,612	POST OCUPAT
265	34	ingrijitoare	4		M/G	1	2,050	3,523	POST OCUPAT
		TOTAL PEDIATRIE				34	100,154	185,939	
COMPARTIMENT DE PRIMIRE URGENTE									
266	1	medic specialist	5	medicina de urgenta	S	1	5,822	13,156	POST OCUPAT
267	2	medic specialist sef CPU	3	medicina de urgenta	S	1	5,819	13,148	POST OCUPAT - numit cu delegare
268	3	medic specialist	2	medicina de urgenta	S	1	5,278	11,924	POST OCUPAT
269	4	medic specialist	4	medicina de urgenta	S	1	5,679	12,835	POST VACANT
270	5	medic specialist	2	pediatrie	S	1	5,278	11,924	POST VACANT
271	6	medic specialist	3	medicina de urgenta	S	1	5,542	12,521	POST OCUPAT
		medic rezident anul III - baza		medicina de urgenta	S		3,432	6,700	POST OCUPAT
272	7	asistent medical principal sef	5	asistenta medicala generala	S	1	4,950	6,641	POST OCUPAT
273	8	asistent medical principal	4	asistenta medicala generala	S	1	4,199	5,634	POST OCUPAT
274	9	asistent medical principal	4	medicina generala	SSD	1	3,684	5,301	POST OCUPAT
275	10	asistent medical principal	4	medicina generala	SSD	1	3,684	5,301	POST OCUPAT
276	11	asistent medical principal	5	medicina generala	PL	1	3,699	5,184	POST OCUPAT
277	12	asistent medical principal	5	medicina generala	PL	1	3,699	5,184	POST OCUPAT
278	13	asistent medical principal	4	generalist	PL	1	3,608	5,057	POST OCUPAT
279	14	asistent medical principal	4	medicina generala	PL	1	3,608	5,057	POST OCUPAT
280	15	asistent medical principal	5	medicina generala	PL	1	3,699	5,184	POST OCUPAT
281	16	asistent medical	5	asistenta medicala generala	PL	1	3,334	4,985	POST OCUPAT
282	17	asistent medical	5	medicina generala	PL	1	3,334	4,985	POST OCUPAT
283	18	asistent medical	5	medicina generala	PL	1	3,334	4,985	POST OCUPAT
284	19	asistent medical	2	medicina generala	PL	1	3,023	4,518	POST OCUPAT
285	20	asistent medical	2	medicina generala	PL	1	3,023	4,518	POST OCUPAT
286	21	asistent medical	2	medicina generala	PL	1	3,023	4,518	POST OCUPAT
287	22	asistent medical	2	medicina generala	PL	1	3,353	4,698	POST OCUPAT
288	23	asistent medical principal	2	medicina generala	PL	1	3,353	4,698	POST OCUPAT
289	24	asistent medical	3	medicina generala	PL	1	3,174	4,744	POST OCUPAT
290	25	asistent medical	2	medicina generala	PI	1	3,023	4,518	POST OCUPAT
291	26	registrator medical principal	5		M	1	2,902	4,912	POST OCUPAT
292	27	registrator medical principal	5		M	1	2,902	4,912	POST OCUPAT
293	28	registrator medical principal	3		M	1	2,762	4,674	POST OCUPAT
294	29	registrator medical principal	2		M	1	2,630	4,451	POST OCUPAT
295	30	registrator medical principal	4		M	1	2,830	4,791	POST OCUPAT
296	31	registrator medical principal	5		M	1	2,664	4,912	POST OCUPAT
297	32	brancardier	3		M/G	1	2,167	3,531	POST OCUPAT

298	33	brancardier	4		M/G	1	2,220	3,619	POST OCUPAT
299	34	brancardier	5		M/G	1	2,275	,711	POST OCUPAT
300	35	brancardier	5		M/G	1	2,275	3,711	POST OCUPAT
301	36	brancardier	3		M/G	1	2,167	3,531	POST OCUPAT
302	37	brancardier	5		M/G	1	2,275	3,711	POST OCUPAT
303	38	brancardier	5		M/G	1	2,275	3,711	POST OCUPAT
304	39	brancardier	5		M/G	1	2,275	3,711	POST OCUPAT
305	40	infirmiera	4		M/G	1	2,254	4,241	POST OCUPAT
306	41	infirmiera	4		M/G	1	2,254	4,241	POST OCUPAT
307	42	infirmiera	5		M/G	1	2,310	4,347	POST OCUPAT
308	43	infirmiera	2		M/G	1	2,094	3,940	POST OCUPAT
309	44	infirmiera	3		M/G	1	2,199	4,136	POST OCUPAT
310	45	infirmiera	5		M/G	1	2,310	4,347	POST OCUPAT
311	46	infirmiera	4		M/G	1	2,254	4,241	POST OCUPAT
312	47	infirmiera	4		M/G	1	2,254	4,241	POST OCUPAT
313	48	ingrijitoare	3		M/G	1	2,167	3,531	POST OCUPAT
314	49	ingrijitoare	3		M/G	1	2,167	3,531	POST OCUPAT
315	50	ingrijitoare	4		M/G	1	2,220	3,619	POST OCUPAT
316	51	ingrijitoare	5		M/G	1	2,275	3,711	POST OCUPAT
317	52	ingrijitoare	3		M/G	1	2,167	3,531	POST OCUPAT
		TOTAL C.P.U.				52	167,198	287,463	
FARMACIE - SPITAL									
318	1	farmacist sef	grad I	farmacie	S	1	6,026	8,717	POST OCUPAT
319	2	farmacist specialist	5	farmacie	S	1	4,883	7,799	POST OCUPAT
320	3	asistent medical principal	3	farmacie	PL	1	2,982	4,624	POST OCUPAT
321	4	asistent medical principal	5	farmacie	PL	1	3,132	4,859	POST VACANT
322	5	asistent medical principal	4	farmacie	PL	1	3,055	4,740	POST OCUPAT
323	6	asistent medical principal	5	farmacie	PL	1	3,132	4,859	POST OCUPAT
324	7	asistent medical principal	3	farmacie	PL	1	2,982	4,624	POST OCUPAT
		TOTAL FARMACIE				7	26,192	40,222	
LABORATOR RECUPERARE, MEDICINA FIZICA SI BALNEOLOGIE									
325	1	medic primar	3	medicina fizica si balneologie	S	1	5,335	14,520	POST OCUPAT
326	2	kinetoterapeut	4	kinetoterapie	S	1	2,948	6,058	POST OCUPAT
327	3	kinetoterapeut	2	kinetoterapie	S	1	2,739	5,628	POST OCUPAT
328	4	asistent medical principal	5	balneofizioterapie	PL	1	3,132	5,913	POST OCUPAT
329	5	asistent medical principal	5	balneofizioterapie	PL	1	3,219	4,859	POST OCUPAT
330	6	asistent medical principal	5	balneofizioterapie	PL	1	3,132	4,859	POST OCUPAT
331	7	asistent medical principal	5	balneofizioterapie	PL	1	3,132	4,859	POST VACANT
332	8	asistent medical principal	5	balneofizioterapie	PL	1	3,132	4,859	POST OCUPAT
333	9	asistent medical principal	5	balneofizioterapie	PL	1	3,132	4,859	POST OCUPAT
334	10	infirmiera	4		M/G	1	2,080	4,133	POST OCUPAT
335	11	infirmiera	3		M/G	1	2,030	4,032	POST OCUPAT
		TOTAL LABORATOR				11	34,011	64,579	
LABORATOR ANATOMIE PATOLOGICA									
336	1	medic primar - coordonator laborator	3	anatomie patologica	S	1	11,800	20,224	POST OCUPAT
337	2	medic primar	4	anatomie patologica	S	1	11,518	19,743	POST OCUPAT
338	3	asistent medical principal coordonator	5	laborator	PL	1	6,162	8,092	POST OCUPAT
339	4	asistent medical principal	5	laborator	PL	1	6,317	6,317	POST OCUPAT
340	5	asistent medical	4	laborator - necropsii	PL	1	5,763	5,925	POST OCUPAT
341	6	ingrijitor	5		M/G	1	3,230	4,832	POST OCUPAT

		TOTAL LABORATOR				6	44,790		65,133	
LABORATOR ANALIZE MEDICALE										
342	1	biolog medical principal	4	biochimie medicala, imunologie clinica si managem	S	1	4,225		7,039	POST OCUPAT
343	2	medic primar sef laborator	3	medicina de laborator	S	1	5,602		15,246	POST OCUPAT -numit cu delegare
344	3	medic primar	5	medicina de laborator	S	1	5,605		15,256	POST OCUPAT
345	4	biolog medical principal	3	biochimie medicala	S	1	4,122		6,867	POST OCUPAT
346	5	biolog medical specialist	3	biochimie medicala si imunologie clinica	S	1	3,462		6,044	POST OCUPAT
347	6	biolog medical specialist	5	biologie	S	1	3,637		6,351	POST OCUPAT
348	7	biolog medical specialist	3	biologie	S	1	3,462		6,044	POST OCUPAT
349	8	biolog medical specialist	2	biologie	S	1	3,297		5,756	POST OCUPAT
350	9	biolog medical specialist	5	biologie	S	1	3,637		6,351	POST OCUPAT
351	10	asistent medical principal sef	5	laborator	PL	1	4,121		5,913	POST OCUPAT
352	11	asistent medical	3	laborator	S	1	3,410		4,893	POST OCUPAT
353	12	asistent medical principal	5	laborator	PL	1	3,132		4,859	POST OCUPAT
354	13	asistent medical principal	5	laborator	PL	1	3,132		4,859	POST OCUPAT
355	14	asistent medical	3	generalist	PL	1	2,690		4,564	POST OCUPAT
356	15	asistent medical	3	laborator	PL	1	2,690		4,564	POST OCUPAT
357	16	asistent medical	5	laborator	PL	1	2,827		4,796	POST OCUPAT
358	17	registrator medical	5		M	1	2,505		4,514	POST VACANT
359	18	ingrijitoare	5		M/G	1	2,102		3,612	POST OCUPAT
		TOTAL LABORATOR				18	63,658		117,528	
CABINET DIABET ZAHARAT, NUTRITIE SI BOLI METABOLICE										
360	1	medic specialist	2	diabet zaharat, nutritie si boli metabolice	S	1	4,427		10,952	POST OCUPAT
361	2	asistent medical principal	4	generalist	PL	1	3,055		4,740	POST OCUPAT
		TOTAL CABINET DIABET				2	7,482		15,692	
CABINET ONCOLOGIE MEDICALA										
362	1	medic specialist	2	oncologie medicala	S	1	4,427		10,952	POST VACANT
		TOTAL CABINET ONCOLOGIE MEDICALA				1	4,427		10,952	
COMPARTIMENT DE SUPAVEGHERE, PREVENIRE SI LIMITARE A INFECTIILOR ASOCIATE ASISTENTEI MEDICALE										
363	1	medic specialist	2	epidemiologie	S	1	4,427		10,952	POST OCUPAT
364	2	medic primar	4	boli infectioase	S	1	6,849		15,186	POST VACANT
365	3	asistent medical	3	generalist	PL	1	2,690		4,564	POST OCUPAT
		TOTAL C.P.C.I.N.				3	13,966		30,702	
STATIA DE STERILIZARE										
366	1	asistent medical	4	generalist	PL	1	2,758		4,679	POST OCUPAT
367	2	asistent medical principal	5	generalist	PL	1	3,132		4,859	POST OCUPAT
368	3	asistent medical	baza	generalist	PL	1	2,270		3,850	POST OCUPAT
369	4	asistent medical principal	4	generalist	PL	1	3,055		4,740	POST OCUPAT
370	5	asistent medical	3	generalist	PL	1	2,690		4,564	POST OCUPAT
371	6	tehnician aparatura medicala	5	aparatura medicala	M	1	2,534		4,672	POST OCUPAT
372	7	ingrijitoare	1		M/G	1	1,900		3,140	POST OCUPAT
		TOTAL STERILIZARE				7	18,339		30,504	
COMP. STATISTICA										
373	1	statistician medical principal	5	statistica	M	1	2,550		4,557	POST OCUPAT
374	2	registrator medical principal	3		M	1	2,427		4,337	POST OCUPAT
		TOTAL COMP. STATISTICA				2	4,977		8,894	
COMP. INTERNARI										

375	1	registrator medical	2		M	1	2,270		4,066	POST VACANT
376	2	registrator medical	2		M	1	2,270		4,066	POST OCUPAT
377	3	garderobier	5		M	1	2,737		3,613	POST OCUPAT
		TOTAL COMP. BIROU DE INTERNARI				3	7,277		11,745	
SPALATORIE										
378	1	spalatoarea cu gestiune	4		M/G	1	2,101		3,612	POST OCUPAT
379	2	spalatoarea	2		M/G	1	1,905		3,273	POST OCUPAT
380	3	spalatoarea	1		M/G	1	1,900		3,172	POST VACANT
381	4	spalatoarea	5		M/G	1	2,102		3,612	POST OCUPAT
382	5	spalatoarea	5		M/G	1	2,102		3,612	POST OCUPAT
383	6	spalatoarea	5		M/G	1	2,102		3,612	POST OCUPAT
		TOTAL SPALATORIE				6	12,212		20,893	
APARAT FUNCTIONAL - TESA										
BIROUL DE MANAGEMENT AL CALITATII SERVICIILOR DE SANATATE										
384	1	Sef birou	5	managementul calitatii serviciilor de sanatate	S	1	5,265		5,908	POST VACANT
385	2	Medic primar	5	managementul calitatii serviciilor de sanatate	S	1	5,605		15,256	POST VACANT
386	3	Referent de specialitate gradul I	5	managementul calitatii serviciilor de sanatate	S	1	4,182		5,634	POST OCUPAT
387	4	Referent gradul II	5	managementul calitatii serviciilor de sanatate	S	1	2,440		3,556	POST VACANT
		TOTAL BIROU				4	17,492		30,354	
COMPARTIMENT JURIDIC										
388	1	consilier juridic IA	5	juridice	S	1	4,182		5,634	POST OCUPAT
		TOTAL CONSILIER JURIDIC				1	4,182		5,634	
BIROU RUNOS										
389	1	economist IA - sef birou	grad II	economice	S	1	4,324		5,724	POST VACANT - numit cu delegare
390	2	economist IA	5	economice	S	1	4,182		5,634	POST OCUPAT
391	3	economist IA	5	economice	S	1	4,182	CFP	6,198	POST OCUPAT
392	4	economist II	5	economice	S	1	2,844		4,748	POST OCUPAT
		TOTAL BIROU RUNOS				4	15,532		22,304	
SERVICIU FINANCIAR-CONTABILITATE										
393	1	economist IA - sef serviciu	grad II	economice	S	1	5,792	CFP	7,205	POST OCUPAT
394	2	economist IA	5	economice	S	1	4,182		5,634	POST OCUPAT
395	3	economist IA	4	economice	S	1	4,487		5,634	POST OCUPAT
396	4	economist I	3	economice	S	1	3,262		4,818	POST OCUPAT
397	5	contabil IA	5	contabilitate	M	1	2,712		4,504	POST OCUPAT
		TOTAL SERVICIU FINANCIAR-CONTABILITATE				5	20,435		27,795	
BIROU ACHIZITII PUBLICE										
398	1	consilier juridic IA	5	economice	S	1	4,182		5,634	POST OCUPAT
399	2	analist-programator grad IA	2	informatica	S	1	3,790		5,170	POST OCUPAT
400	3	economist IA	5	economice	S	1	4,182		5,634	POST OCUPAT
		TOTAL COMP. ACHIZITII PUBLICE				3	12,154		16,438	
COMPARTIMENT INFORMATICA										
401	1	economist IA	5	economice	S	1	4,182		5,634	POST OCUPAT
		TOTAL COMPARTIMENT INFORMATICA				1	4,182		5,634	
COMPARTIMENT SECURITATEA MUNCII, PSI, PROTECTIE CIVILA SI SITUATII DE URGENTA										
402	1	Economist IA	5	economice	S	1	4,182		5,634	POST VACANT

		TOTAL COMPARTIMENT SECURITATEA MUNCII, PSI, PROTECTIE CIVILA				1	4,182		5,634	
COMPARTIMENT AUDIT INTERN										
403	1	auditor grad 1	5	economic	S	1	4,373		5,857	POST VACANT
		TOTAL AUDITOR 1A				1	4373		5857	
SERVICIUL APROVIZIONARE-ADMINISTRATIV-TRANSPORT-PAZA										
404	1	sef serviciu	grad II 5	tehnice	S	1	5,265		6,550	POST OCUPAT
405	2	economist IA	5		S	1	4,182		5,634	POST OCUPAT
406	3	economist II	5	economice	S	1	2,844		4,316	POST VACANT
407	4	contabil IA	5	contabilitate	M	1	2,712		4,503	POST OCUPAT
408	5	referent tr. II	5		M	1	2624		4,381	POST OCUPAT
409	6	arhivar	4		M	1	2,111		4,006	POST OCUPAT
410	7	casier	5		M	1	2,164		4,106	POST OCUPAT
411	8	secretar-dactilograf IA	3		M	1	2,282		4,121	POST OCUPAT
412	9	sofer II	5		M	1	2,335		4,176	POST OCUPAT
413	10	sofer II	5		M	1	2,335		4,176	POST OCUPAT
414	11	portar	3		M/G	1	1,992		3,227	POST OCUPAT
415	12	portar	5		M/G	1	2,093		3,392	POST OCUPAT
416	13	portar	5		M/G	1	2,093		3,392	POST VACANT
417	14	portar	5		M/G	1	2,093		3,392	POST VACANT
418	15	portar	5		M/G	1	2,093		3,392	POST OCUPAT
419	16	ingrijitoare	2		M/G	1	1,905		3,273	POST OCUPAT
		TOTAL SERV.APROV., AD-TIV, TRANSP., PAZA				16	41,123		66,037	
COMPARTIMENT DE INTRETINERE-REPARATII CLADIRI										
420	1	MUNCITOR TR.I	4	electrician	M/G	1	2,384		4,201	POST OCUPAT
421	2	MUNCITOR TR.I	5	electrician	M/G	1	2,444		4,306	POST OCUPAT
422	3	MUNCITOR TR.I	4	electrician	M/G	1	2,384		4,201	POST OCUPAT
423	4	MUNCITOR TR.III	5	instalator sanitar	M/G	1	2,148		3,979	POST OCUPAT
424	5	MUNCITOR TR.I	5	instalator sanitar	M/G	1	2,444		4,306	POST OCUPAT
425	6	MUNCITOR TR.I	5	lenjereasa	M/G	1	2,444		4,306	POST OCUPAT
426	7	MUNCITOR TR.I	5	zidar	M/G	1	2,444		4,306	POST OCUPAT
427	8	MUNCITOR TR.I	5	zidar	M/G	1	2,444		4,306	POST OCUPAT
428	9	MUNCITOR TR.I	5	zugrav-vopsitor	M/G	1	2,444		4,306	POST VACANT
429	10	MUNCITOR TR.I	3	zidar-faiantar	M/G	1	2,327		4,099	POST OCUPAT
430	11	MUNCITOR TR.I	5	fochist - sef formatie	M/G	1	2,506		4,415	POST OCUPAT
431	12	MUNCITOR TR.I	5	fochist	M/G	1	2,444		4,306	POST OCUPAT
432	13	MUNCITOR TR.I	5	fochist	M/G	1	2,444		4,306	POST OCUPAT
433	14	MUNCITOR TR.I	5	fochist	M/G	1	2,444		4,306	POST OCUPAT
434	15	MUNCITOR TR.II	5	fochist	M/G	1	2,179		4,112	POST OCUPAT
435	16	MUNCITOR TR.I	5	lacatus mecanic	M/G	1	2,444		4,306	POST OCUPAT
436	17	MUNCITOR TR.I	5	lacatus mecanic	M/G	1	2,444		4,306	POST OCUPAT
437	18	MUNCITOR TR.III	5	lacatus mecanic	M/G	1	2,148		3,979	POST OCUPAT
438	19	MUNCITOR TR.I	5	lacatus mecanic	M/G	1	2,444		4,306	POST OCUPAT
439	20	MUNCITOR TR.I	5	lacatus mecanic	M/G	1	2,444		4,306	POST VACANT
440	21	MUNCITOR TR.III	5	telefonista	M/G	1	2,148		3,979	POST OCUPAT
441	22	MUNCITOR TR.III	5	telefonista	M/G	1	2,148		3,979	POST OCUPAT
442	23	MUNCITOR TR.III	4	telefonista	M/G	1	2,095		3,881	POST OCUPAT
443	24	MUNCITOR TR.IV	5	liftier	M/G	1	2,093		3,905	POST VACANT
444	25	MUNCITOR TR.IV	4	liftier	M/G	1	2,042		3,810	POST OCUPAT
445	26	MUNCITOR TR.IV	5	liftier	M/G	1	2,093		3,905	POST OCUPAT
446	27	MUNCITOR TR.IV	5	liftier	M/G	1	2,093		3,905	POST OCUPAT
447	28	MUNCITOR TR.IV	2	liftier	M/G	1	1,900		3,540	POST OCUPAT

448	29	MUNCITOR TR.IV	5	liftier	M/G	1	2,093	3,905	POST VACANT
449	30	MUNCITOR NEC. TR.I	5		M/G	1	1,945	,000	POST OCUPAT
450	31	MUNCITOR NEC. TR.I	5		M/G	1	1,945	3,000	POST OCUPAT
		TOTAL COMP. INTRETINERE				31	70,443	125,773	
		TOTAL SPITAL				450	1,454,016	3,120	2,622,630
		AMBULATORIU INTEGRAT							
CABINET CARDIOLOGIE									
		medic rezident an I	2	cardiologie	S	1	2482	5700	POST OCUPAT
CABINET NEFROLOGIE									
451	1	medic specialist	2	nefrologie	S	1	4,427	10,952	POST VACANT
CABINET ORTOPEDIE SI TRAUMATOLOGIE									
452	1	medic specialist	2	ortopedie si traumatologie	S	1	4,427	10,952	POST VACANT
CABINET UROLOGIE									
453	1	medic specialist	2	urologie	S	1	4,427	10,952	POST VACANT
CABINET BOLI INFECTIOASE									
454	1	medic specialist	2	boli infectioase	S	1	4,427	10,952	POST VACANT
CABINET PSIHIATRIE									
455	1	medic specialist	2	psihiatrie	S	1	4,427	10,952	POST VACANT
CABINET DERMATOVENEROLOGIE									
456	1	medic specialist	2	dermatovenerologie	S	1	4,427	10,952	POST VACANT
COMPARTIMENT ENDOSCOPIE DIGESTIVA									
457	1	medic specialist	2	gastroenterologie	S	1	4,427	10,952	POST VACANT
LABORATOR RADIOLOGIE SI IMAGISTICA MEDICALA									
458	1	medic specialist	1	radiologie si imagistica medicala	S	1	4,215	10,430	POST VACANT
459	2	medic specialist coordonator laborator	2	radiologie si imagistica medicala	S	1	4,648	11,500	POST OCUPAT
460	3	medic specialist	1	radiologie si imagistica medicala	S	1	4,215	10,430	POST OCUPAT
461	4	medic rezident anul IV	2	radiologie si imagistica medicala	S		4,125	8,241	POST OCUPAT
462	5	fizician medical	4	fizica	S	1	3,548	6,196	POST OCUPAT
463	6	asistent medical principal	5	radiologie	PL	1	3,132	4,859	POST OCUPAT
464	7	asistent medical principal coordona	5	radiologie	PL	1	4,121	5,913	POST OCUPAT
465	8	asistent medical principal	5	radiologie-imagistica	PL	1	3,132	4,859	POST OCUPAT
466	9	asistent medical principal	5	radiologie-imagistica	PL	1	3,132	4,859	POST OCUPAT
467	10	asistent medical principal	4	radiologie-imagistica	PL	1	3,055	4,740	POST OCUPAT
468	11	asistent medical principal	4	radiologie-imagistica	PL	1	3,055	4,740	POST OCUPAT
469	12	asistent medical principal	3	radiologie	PL	1	2,982	4,624	POST OCUPAT
470	13	asistent medical principal	5	radiologie-imagistica	PL	1	3,132	4,859	POST OCUPAT
471	14	asistent medical principal	3	radiologie-imagistica	PL	1	2,982	4,624	POST OCUPAT
472	15	asistent medical principal	2	radiologie-imagistica	PL	1	2,839	4,403	POST OCUPAT
		TOTAL LABORATOR RADIOLOGIE SI IMAGISTICA MEDICALA				15	52,313	95,277	
		TOTAL AMBULATORIU INTEGRAT (CABINETE + LABORATOR RADIOLOGIE SI IMAGISTICA MEDICALA)				22	85,784	177,641	
		TOTAL SPITAL				450	1,454,016		

		TOTAL CIAS				472	1,539,800	3,120	2,800,271	
CAPITOLUL "TRANSFERURI" (BUGET DE STAT)										
CABINET PLANIFICARE FAMILIALA										
1	1	medic primar	2	obstetrica-ginecologie	S	1	5,082		13,828	POST OCUPAT
2	2	asistent medical principal	5	generalist	PL	1	3,132		4,859	POST OCUPAT
		TOTAL CAB.PLANIFICARE				2	8,214		18,687	
DISPENSAR T.B.C.										
3	1	medic primar	4	pneumologie	S	1	5,469	1,040	14,883	POST OCUPAT
4	2	asistent medical principal	5	generalist	PL	1	3,132		4,859	POST OCUPAT
5	3	asistent medical principal	5	generalist	PL	1	3,132		4,859	POST OCUPAT
6	4	asistent medical principal	5	generalist	PL	1	3,132		4,859	POST OCUPAT
7	5	asistent medical principal	5	generalist	PL	1	3,132		4,859	POST OCUPAT
8	6	asistent medical principal	5	radiologie	PL	1	3,132		4,859	POST VACANT
		TOTAL DISP. TBC				6	21,129	1,040	39,178	
MEDICI REZIDENTI ANUL I										
9	1	MEDIC REZIDENT AN I	baza	cardiologie	S	1	2482		5700	POST OCUPAT
10	2	MEDIC REZIDENT AN I	baza	neontologie	S	1	2482		5700	POST OCUPAT
		TOTAL MEDICI REZIDENTI AN I				2	4964		11400	
MEDICI REZIDENTI ANUL V										
11	1	MEDIC REZIDENT AN V	1	anestezie si terapie intensiva	S	1	3,788		7,848	POST VACANT
12	2	MEDIC REZIDENT AN V	1	pediatrie	S	1	4,125		8,241	POST OCUPAT
		TOTAL MEDICI REZIDENTI AN V				2	7,913		16,089	
MEDICI REZIDENTI ANUL III										
13	1	MEDIC REZIDENT AN III	baza	anestezie si terapie intensiva	S	1	3,432		6,700	POST OCUPAT
14	2	MEDIC REZIDENT AN III	baza	neonatologie	S	1	3,069		6,700	POST OCUPAT
15	3	MEDIC REZIDENT AN III	baza	medicina de urgenta	S	1	3,432		6,700	POST OCUPAT
		TOTAL MEDICI REZIDENTI AN III				3	9,933		20,100	
		TOTAL REZIDENTI				7	22,810	0	47,589	
		TOTAL "TRANSFERURI"				15	52,153	1,040	105,454	
		TOTAL CIAS				472	1,539,800	3,120	2,800,271	
		TOTAL SPITAL				487	1,591,953	4,160	2,905,725	
MEDICI DIN AFARA UNITATII CARE PRESTEAZA ORE DE GARDA										
LINIA DE GARDA MEDICINA DE URGENTA										
1	1	MEDIC SPECIALIST	3	MF cu competenta in urgente prespitalicesti	S		5,542		5,542	CIM PE DURATA DETERMINATA
2	2	MEDIC SPECIALIST	5	MF cu competenta in urgente prespitalicesti	S		5,822		5,822	CIM PE DURATA DETERMINATA
3	3	MEDIC SPECIALIST	2	medicina de urgenta	S		5,278		5,278	CIM PE DURATA DETERMINATA
LINIA DE GARDA OBSTETRICA GINECOLOGIE										
4	1	MEDIC SPECIALIST	2	obstetrica-ginecologie	S		4,427		4,427	CIM PE DURATA DETERMINATA

5	2	MEDIC SPECIALIST	2	obstetrica-ginecologie	S		4,427	4,427	CIM PE DURATA DETERMINATA
6	3	MEDIC SPECIALIST	2	obstetrica-ginecologie	S		4,427	4,427	CIM PE DURATA DETERMINATA
7	4	MEDIC SPECIALIST	2	obstetrica-ginecologie	S		4,427	4,427	CIM PE DURATA DETERMINATA
8	5	MEDIC SPECIALIST	1	obstetrica-ginecologie	S		4,215	4,215	CIM PE DURATA DETERMINATA
		LINIA DE GARDA ATI							
9	1	MEDIC PRIMAR	4	anestezie si terapie intensiva	S		7,302	7,302	CIM PE DURATA DETERMINATA
		LINIA DE GARDA PEDIATRIE							
10	1	MEDIC PRIMAR	5	pediatrie	S		5,605	5,605	CIM PE DURATA DETERMINATA
11	2	MEDIC SPECIALIST	5	medicina de familie (facultatea de pediatrie)	S		4,883	4,883	CIM PE DURATA DETERMINATA
		LINIA DE GARDA MEDICINA INTERNA							
12	1	MEDIC PRIMAR	4	nefrologie	S		5,469	5,469	CIM PE DURATA DETERMINATA
13	2	MEDIC SPECIALIST	3	boli infectioase	S		4,648	4,648	CIM PE DURATA DETERMINATA
14	3	MEDIC REZIDENT AN V	1	medicina interna	S		3,929	3,929	CIM PE DURATA DETERMINATA
15	4	MEDIC PRIMAR	2	medicina interna	S		5,082	5,082	CIM PE DURATA DETERMINATA
		LINIA DE GARDA CHIRURGIE GENERALA							
16	1	MEDIC SPECIALIST	1	chirurgie generala	S		4,215	4,215	CIM PE DURATA DETERMINATA
17	2	MEDIC SPECIALIST	2	chirurgie generala	S		4,427	4,427	CIM PE DURATA DETERMINATA
18	3	MEDIC SPECIALIST	2	chirurgie generala	S		4427	4427	CIM PE DURATA DETERMINATA
19	4	MEDIC SPECIALIST	5	chirurgie generala	S		4883	4883	CIM PE DURATA DETERMINATA

MANAGER,
S.L. Dr. OPREA DOREL



DIRECTOR FINANCIAR-CONTABIL,
Ec. TUDOR RAMONA-CAMELIA

ÎNTOCMIT,
Ec. Drăgan Emanuela-Camelia