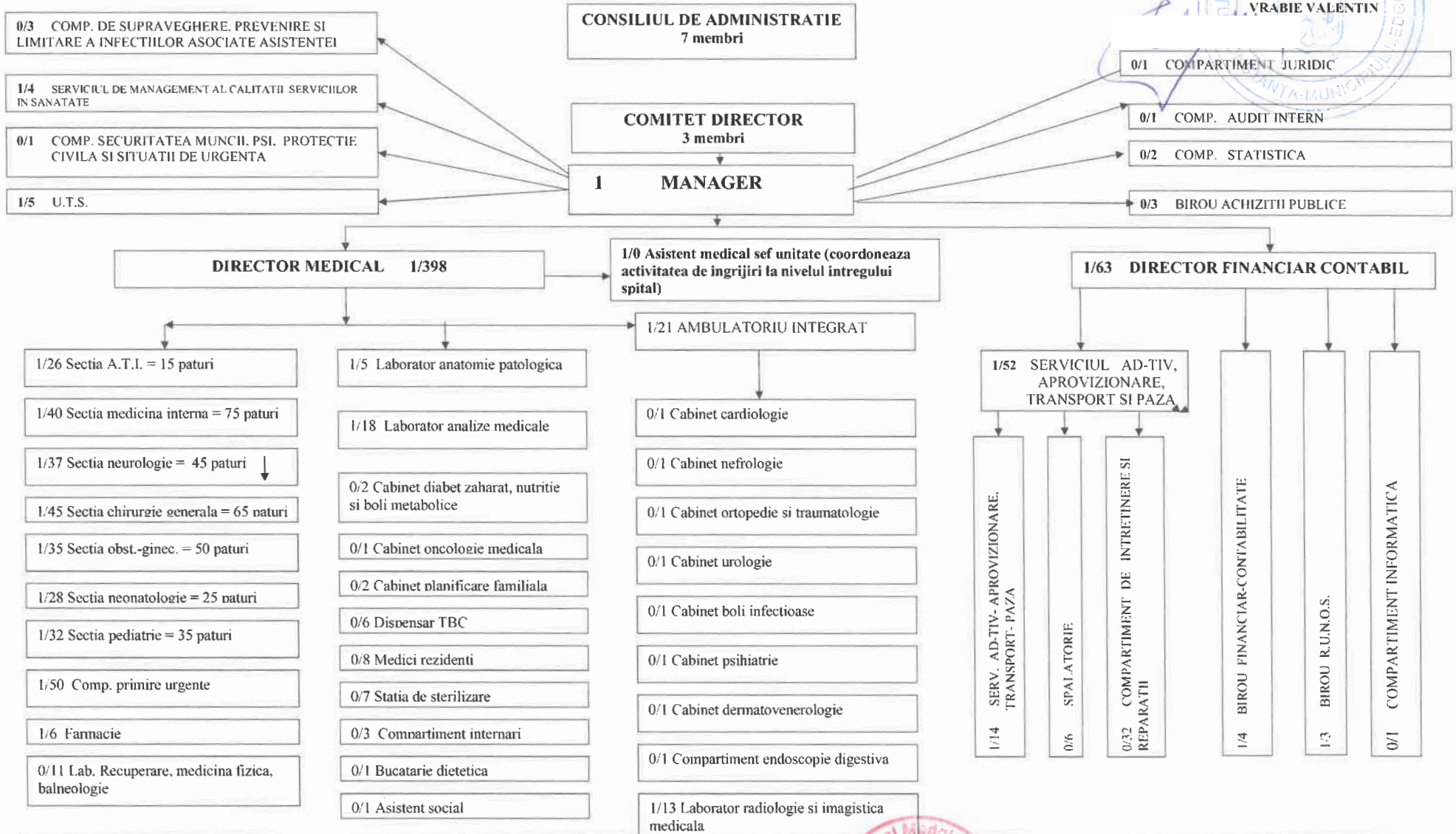


ORGANIGRAMA

APROBAT,
PRIMARIA MUNICIPIULUI MEDGIDIA
PRIMAR
VRABIE VALENTIN



LEGENDA

POSTURI APROBATE:
483, din care:

= 470
- FNU/ASS
din care:
- medici = 61
- alt pers. san. super. = 13
- pers. san. mediu = 199
- pers. aux. sanitar = 127
- pers. TESA = 26
- pers. management = 5
- pers. paza = 5
- pers. intretinere si deservire = 34

BUGET DE STAT = 16

din care :
- medici = 10
- pers. mediu san. = 6



MANAGER,
AGLIȚOIU DUMITRU-EUGEN

CONSILIUL LOCAL MEDGIDIA
 SPITALUL MUNICIPAL MEDGIDIA
 Str. Ion Creangă nr.18
 Tel./Fax: 0241810690/0241810931
 CUI: 4300752

APROBAT,
 PRIMĂRIA MUNICIPIULUI MEDGIDIA
 PRIMAR,
 VRABIE VALENTIN

NR. 3766 / 17.03.2024

STAT DE FUNCTII

NR. CRT	NR. CRT	FUNCTIA, GRADUL SAU TREAPTA PROFESIONALA CONFORM Legii nr. 153/2017	Grad/ Grada tia	SPECIALITATEA	NIVEL STU DII	CUAN TUM POST	SALARIUL DE BAZA LEGEA NR. 153/2017/ 31.12.2018	spor doctorat	SALARIUL DE BAZA LEGEA NR. 153/2017 01.11.2020	NATURA POSTULUI
0	0	1	2	3	4	5	6	7	8	9
COMITET DIRECTOR - SPITAL - 310 DE PATURI										
1	1	Manager	grad II	asistenta medicala generala; master in managementul sanitar	S	1	8,125		17,221	POST OCUPAT
2	2	Director Medical	5	medic primar chirurgie generala	S	1	6,026		16,401	POST OCUPAT
3	3	Director financiar-contabil	grad II	studii economice	S	1	6,875		7,022	POST OCUPAT
TOTAL COMITET DIRECTOR						3	21,026		40,644	
ASISTENT MEDICAL SEF UNITATE										
4	1	Asistent medical sef unitate	grad II	medicina generala	PL	1	4,938		6,371	POST VACANT
ASISTENT SOCIAL										
5	1	Asistent social	baza	asistență socială	S	1	2,609		4,394	POST VACANT
SECTIA ATI = 15 PATURI, DIN CARE: COMPARTIMENT PENTRU COPII = 4 PATURI										
6	1	medic sef sectie	5	ATI	S	1	7,858		17,442	POST VACANT
7	2	medic specialist coordonator sectie	4	ATI	S	1	5,963		13,477	POST OCUPAT
8	3	medic primar	5	ATI	S	1	7,484		16,611	POST VACANT
9	4	medic specialist	2	ATI	S	1	5,278		11,924	POST VACANT
10	5	medic rezident an V	2	ATI	S	1	3,978		8,241	POST OCUPAT
		medic rezident anul IV	1	ATI	S		3,788		7,848	POST OCUPAT
		medic rezident anul I	1	ATI	S		2,769		5,700	POST OCUPAT
11	6	asistent medical principal sef	5	medicina generala	PL	1	4,304		6,641	POST OCUPAT
12	7	asistent medical principal	5	asistenta medicala generala	S	1	4,304		5,775	POST OCUPAT
13	8	asistent medical principal	5	asistenta medicala generala	S	1	4,304		5,775	POST OCUPAT
14	9	asistent medical principal	5	asistenta medicala generala	S	1	4,304		5,775	POST OCUPAT
15	10	asistent medical principal	4	medicina generala	SSD	1	3,684		5,301	POST OCUPAT

16	11	asistent medical principal		medicina generala	PL		3,699	5,184	POST OCUPAT
17	12	asistent medical principal	5	medicina generala	PL		3,699	5,184	POST OCUPAT
18	13	asistent medical principal	5	medicina generala	PL	1	3,699	5,184	POST OCUPAT
19	14	asistent medical principal	5	medicina generala	PL	1	3,699	5,184	POST OCUPAT
20	15	asistent medical principal	5	medicina generala	PL	1	3,699	5,184	POST OCUPAT
21	16	asistent medical principal	5	medicina generala	PL	1	3,699	5,184	POST OCUPAT
22	17	asistent medical principal	5	medicina generala	PL	1	3,699	5,184	POST OCUPAT
23	18	asistent medical principal	5	medicina generala	PL	1	3,699	5,184	POST OCUPAT
24	19	asistent medical principal	5	medicina generala	PL	1	3,699	5,184	POST VACANT
25	20	infirmiera	5		G	1	2,310	3,404	POST OCUPAT
26	21	infirmiera	3		G	1	2,199	3,240	POST OCUPAT
27	22	infirmiera	4		G	1	2,254	3,321	POST OCUPAT
28	23	infirmiera	4		G	1	2,254	3,321	POST OCUPAT
29	24	infirmiera	5		G	1	2,310	3,404	POST OCUPAT
30	25	infirmiera	3		G	1	2,199	3,240	POST OCUPAT
31	26	ingrijitoare	3		G	1	2,167	2,862	POST OCUPAT
32	27	ingrijitoare	4		G	1	2,275	3,007	POST OCUPAT
		TOTAL ATI				27	109,277	182,965	
		UNITATE DE TRANSFUZII SANGUINE							
33	1	medic primar coordonator	3	medicina de laborator	S	1	5,602	15,246	POST OCUPAT
34	2	asistent medical principal coordonator UTS	5	asistenta medicala generala	S	1	4,121	5,913	POST OCUPAT
35	3	asistent medical principal	5	asistenta medicala generala	S	1	3,583	5,142	POST OCUPAT
36	4	asistent medical principal	5	asistenta medicala generala	S	1	3,583	5,142	POST OCUPAT
37	5	asistent medical principal	5	medicina generala	PL	1	3,132	4,859	POST OCUPAT
38	6	asistent medical	4	medicina generala	PL	1	2,758	4,679	POST OCUPAT
		TOTAL U.T.S.				6	22,779	40,981	

SECTIA MEDICINA INTERNA = 75 PATURI, DIN CARE:

- Comp.diabet zaharat, nutritie si boli metabolice=5 paturi, Comp.reumatologie=5 paturi, Comp.recup.,med.fiz., baln.=5 paturi, Comp.endocrinologie=5 paturi, Comp.cardiologie=5 paturi

39	1	medic sef sectie	5	medicina interna	S	1	6,938	16,019	POST VACANT
40	2	medic primar	3	medicina interna	S	1	5,335	14,520	POST OCUPAT
41	3	medic primar	5	medicina interna	S	1	5,605	15,256	POST OCUPAT
42	4	medic primar	5	medicina interna	S	1	6,938	16,019	POST OCUPAT
43	5	medic primar	3	medicina interna	S	1	5,335	14,520	POST OCUPAT
44	6	asistent medical principal sef	5	medicina generala	PL	1	4,304	5,913	POST OCUPAT
45	7	asistent medical principal	5	medicina generala	PL	1	3,132	4,859	POST OCUPAT
46	8	asistent medical principal	4	asistenta medicala generala	S	1	3,497	5,016	POST OCUPAT
47	9	asistent medical principal	5	medicina generala	PL	1	3,132	4,859	POST OCUPAT
48	10	asistent medical principal	5	medicina generala	PL	1	3,132	4,859	POST OCUPAT
49	11	asistent medical principal	5	medicina generala	PL	1	3,132	4,859	POST OCUPAT
50	12	asistent medical principal	5	medicina generala	PL	1	3,132	4,859	POST OCUPAT
51	13	asistent medical principal	5	medicina generala	PL	1	3,132	4,859	POST OCUPAT
52	14	asistent medical principal	5	medicina generala	PL	1	3,132	4,859	POST OCUPAT

53	15	asistent medical principal		medicina generala	PL		3,132	4,859	POST VACANT
54	16	asistent medical principal	5	medicina generala	PL		3,132	4,859	POST OCUPAT
55	17	asistent medical principal	5	medicina generala	PL	1	3,132	4,859	POST OCUPAT
56	18	asistent medical principal	5	medicina generala	PL	1	3,132	4,859	POST OCUPAT
57	19	asistent medical principal	4	medicina generala	PL	1	3,055	4,740	POST OCUPAT
58	20	asistent medical principal	3	medicina generala	PL	1	2,982	4,624	POST OCUPAT
59	21	asistent medical principal	4	medicina generala	PL	1	3,055	4,740	POST OCUPAT
60	22	asistent medical principal	5	medicina generala	PL	1	3,132	4,859	POST OCUPAT
61	23	asistent medical principal	4	medicina generala	PL	1	3,055	4,740	POST OCUPAT
62	24	asistent medical	baza	medicina generala	PL	1	2,270	3,850	POST OCUPAT
63	25	infirmiera	3		M/G	1	2,030	3,120	POST OCUPAT
64	26	infirmiera	4		M/G	1	2,080	3,198	POST OCUPAT
65	27	infirmiera	3		M/G	1	2,030	3,120	POST OCUPAT
66	28	infirmiera	5		M/G	1	2,133	3,278	POST OCUPAT
67	29	infirmiera	5		M/G	1	2,133	3,278	POST OCUPAT
68	30	infirmiera	3		M/G	1	2,030	3,120	POST OCUPAT
69	31	infirmiera	3		M/G	1	2,030	3,120	POST OCUPAT
70	32	infirmiera	3		M/G	1	2,030	3,120	POST OCUPAT
71	33	ingrijitoare	3		M/G	1	2,000	2,749	POST OCUPAT
72	34	ingrijitoare	1		M/G	1	1,900	2,536	POST OCUPAT
73	35	ingrijitoare	3		M/G	1	2,000	2,749	POST OCUPAT
74	36	ingrijitoare	5		M/G	1	2,102	2,889	POST OCUPAT
75	37	ingrijitoare	4		M/G	1	2,050	2,818	POST OCUPAT
COMPARTIMENT DIABET ZAHARAT, NUTRITIE SI BOLI METABOLICE = 5 PATURI									
76	38	medic specialist	2		S	1	4,427	10,952	POST OCUPAT
COMPARTIMENT REUMATOLOGIE = 5 PATURI									
77	39	medic primar	5	reumatologie	S	1	5,605	15,256	POST OCUPAT
COMPARTIMENT ENDOCRINOLOGIE = 5 PATURI									
78	40	medic specialist	3	endocrinologie	S	1	4,648	11,500	POST OCUPAT
COMPARTIMENT CARDIOLOGIE = 5 PATURI									
79	41	medic specialist	2	cardiologie	S	1	4,427	10,952	POST OCUPAT
		TOTAL MEDICINA INTERNA				41	135,608	256,020	
SECTIA NEUROLOGIE = 45 PATURI									
80	1	medic sef sectie	5	neurologie	S	1	6,938	16,019	POST VACANT
81	2	medic specialist	3	neurologie	S	1	4,648	11,500	POST OCUPAT
82	3	medic primar	5	neurologie	S	1	5,605	15,256	POST OCUPAT
83	4	medic primar	5	neurologie	S	1	5,605	15,256	POST OCUPAT
84	5	asistent medical principal	5	asistenta medicala generala	S	1	3,583	5,142	POST OCUPAT
85	6	asistent medical principal sef	5	asistenta medicala generala	S	1	4,120	5,913	POST OCUPAT
86	7	asistent medical principal	5	asistenta medicala generala	S	1	3,583	5,142	POST OCUPAT
87	8	asistent medical principal	4	medicina generala	PL	1	3,055	4,740	POST OCUPAT
88	9	asistent medical principal	5	medicina generala	PL	1	3,132	4,859	POST OCUPAT
89	10	asistent medical principal	5	pediatrie	PL	1	3,132	4,859	POST OCUPAT

90	11	asistent medical principal		medicina generala	PL		3,132		4,859	POST OCUPAT
91	12	asistent medical principal	5	medicina generala	PL		3,132		4,859	POST OCUPAT
92	13	asistent medical principal	5	pediatrie	PL	1	3,132		4,859	POST OCUPAT
93	14	asistent medical principal	5	pediatrie	PL	1	3,132		4,859	POST OCUPAT
94	15	asistent medical principal	5	pediatrie	PL	1	3,132		4,859	POST OCUPAT
95	16	asistent medical principal	5	obstetrica ginecologie	PL	1	3,132		4,859	POST OCUPAT
96	17	asistent medical principal	5	medicina generala	PL	1	3,132		4,859	POST OCUPAT
97	18	asistent medical principal	5	medicina generala	PL	1	3,132		4,859	POST OCUPAT
98	19	asistent medical principal	5	medicina generala	PL	1	3,132		4,859	POST OCUPAT
99	20	asistent medical	5	medicina generala	PL	1	2,827		4,796	POST VACANT
100	21	asistent medical	3	medicina generala	PL	1	2,690		4,564	POST OCUPAT
101	22	asistent medical	4	medicina generala	PL	1	2,758		4,679	POST OCUPAT
102	23	infirmiera	3		M/G	1	2,030		3,120	POST OCUPAT
103	24	infirmiera	baza		M/G	1	1,900		2,725	POST OCUPAT
104	25	infirmiera	5		M/G	1	2,133		3,278	POST OCUPAT
105	26	infirmiera	5		M/G	1	2,133		3,278	POST OCUPAT
106	27	infirmiera	3		M/G	1	2,030		3,120	POST OCUPAT
107	28	infirmiera	5		M/G	1	2,133		3,278	POST OCUPAT
108	29	infirmiera	5		M/G	1	2,133		3,278	POST OCUPAT
109	30	infirmiera	5		M/G	1	2,133		3,278	POST OCUPAT
110	31	infirmiera	5		M/G	1	2,133		3,278	POST OCUPAT
111	32	infirmiera	4		M/G	1	2,080		3,198	POST OCUPAT
112	33	infirmiera	5		M/G	1	2,133		3,278	POST OCUPAT
113	34	infirmiera	3		M/G	1	2,030		3,120	POST OCUPAT
114	35	infirmiera	5		M/G	1	2,133		3,278	POST OCUPAT
115	36	ingrijitoare	3		M/G	1	2,000		2,749	POST OCUPAT
116	37	ingrijitoare	5		M/G	1	2,102		2,889	POST OCUPAT
117	38	ingrijitoare	5		M/G	1	2,102		2,889	POST OCUPAT
		TOTAL NEUROLOGIE				38	113,202		196,490	

SECTIA CHIRURGIE GENERALA = 65 PATURI, DIN CARE: 5 PATURI ORL, 5 PATURI OFTALMOLOGIE, 15 PATURI ORTOPEDIE-TRAUMATOLOGIE

118	1	medic sef sectie	5	chirurgie generala	S	1	5,885	1,040	16,019	POST OCUPAT
119	2	medic primar	3	chirurgie generala	S	1	5,335		14,520	POST OCUPAT
120	3	medic primar	5	chirurgie generala	S	1	5,605		15,256	POST VACANT
121	4	medic primar	5	chirurgie generala	S	1	5,605		15,256	POST OCUPAT
		COMP. OFTALMOLOGIE = 5 PATURI								
122	5	medic primar	3	oftalmologie	S	1	5,335		14,520	POST OCUPAT
		COMP. O.R.L. = 5 PATURI								
123	6	medic specialist	2	otorinolaringologie	S	1	4,427		10,952	POST OCUPAT
		COMP. ORTOPEDIE-TRAUMAT. = 15 PATURI								
124	7	medic primar	5	ortopedie-traumatologie	S	1	5,605	1,040	15,256	POST OCUPAT
125	8	asistent medical principal coordonator bloc operator	5	asistenta medicala generala	S	1	4,120		5,913	POST OCUPAT
126	9	asistent medical principal	5	medicina generala	PL	1	3,132		4,859	POST OCUPAT

127	10	asistent medical principal		medicina generala	PL		3,132		4,859	POST OCUPAT
128	11	asistent medical principal	5	medicina generala	PL	1	3,132		4,859	POST VACANT
129	12	asistent medical principal	4	medicina generala	PL	1	3,055		4,740	POST OCUPAT
130	13	asistent medical principal	5	medicina generala	PL	1	3,132		4,859	POST OCUPAT
131	14	asistent medical principal	5	medicina generala	PL	1	3,132		4,859	POST OCUPAT
132	15	asistent medical principal	5	medicina generala	PL	1	3,132		4,859	POST OCUPAT
133	16	asistent medical principal	5	medicina generala	PL	1	3,132		4,859	POST OCUPAT
134	17	asistent medical principal	4	medicina generala	PL	1	3,055		4,740	POST OCUPAT
135	18	asistent medical principal	5	medicina generala	PL	1	3,132		4,859	POST OCUPAT
136	19	asistent medical principal	5	medicina generala	PL	1	3,132		4,859	POST OCUPAT
137	20	asistent medical principal	5	medicina generala	PL	1	3,132		4,859	POST OCUPAT
138	21	asistent medical principal	5	medicina generala	PL	1	3,132		4,859	POST OCUPAT
139	22	asistent medical principal	5	medicina generala	PL	1	3,132		4,859	POST OCUPAT
140	23	asistent medical principal	5	medicina generala	PL	1	3,132		4,859	POST OCUPAT
141	24	asistent medical principal	3	medicina generala	PL	1	2,982		4,624	POST OCUPAT
142	25	asistent medical principal	3	medicina generala	PL	1	2,982		4,624	POST OCUPAT
143	26	asistent medical principal	3	medicina generala	PL	1	2,982		4,624	POST OCUPAT
144	27	asistent medical principal	5	medicina generala	PL	1	3,132		4,859	POST OCUPAT
145	28	asistent medical principal	4	medicina generala	PL	1	3,055		4,740	POST OCUPAT
146	29	asistent medical	4	medicina generala	PL	1	2,758		4,679	POST OCUPAT
147	30	infirmiera	5		M/G	1	2,133		3,278	POST OCUPAT
148	31	infirmiera	3		M/G	1	2,030		3,120	POST OCUPAT
149	32	infirmiera	5		M/G	1	2,133		3,278	POST OCUPAT
150	33	infirmiera	4		M/G	1	2,080		3,198	POST OCUPAT
151	34	infirmiera	3		M/G	1	2,030		3,120	POST OCUPAT
152	35	infirmiera	5		M/G	1	2,133		3,278	POST OCUPAT
153	36	infirmiera	5		M/G	1	2,133		3,278	POST OCUPAT
154	37	infirmiera	3		M/G	1	2,030		3,120	POST OCUPAT
155	38	infirmiera	3		M/G	1	2,030		3,120	POST OCUPAT
156	39	infirmiera	2		M/G	1	1,933		2,971	POST OCUPAT
157	40	brancardier	3		M/G	1	2,167		2,862	POST VACANT
158	41	ingrijitoare	3		M/G	1	2,000		2,749	POST OCUPAT
159	42	ingrijitoare	5		M/G	1	2,102		2,889	POST OCUPAT
160	43	ingrijitoare	5		M/G	1	2,102		2,889	POST OCUPAT
161	44	ingrijitoare	2		M/G	1	1,905		2,618	POST OCUPAT
162	45	ingrijitoare	5		M/G	1	2,102		2,889	POST OCUPAT
163	46	ingrijitoare	3		M/G	1	2,000		2,749	POST OCUPAT
		TOTAL CHIRURGIE GENERALA				46	141,677	2,080	259,895	
SECTIA OBSTETRICA-GINECOLOGIE = 50 PATURI										
164	1	medic sef sectie	5	obstetrica ginecologie	S	1	6,938	1,040	16,019	POST OCUPAT
165	2	medic primar	5	obstetrica ginecologie	S	1	5,605		15,256	POST OCUPAT
166	3	medic primar	3	obstetrica ginecologie	S	1	5,335		14,520	POST OCUPAT
167	4	medic specialist	2	obstetrica ginecologie	S	1	4,427		10,952	POST OCUPAT

168	5	asistent medical principal sef		generalist	PL		4,120		5,913	POST OCUPAT
169	6	moasa principala	5	moasa	S		3,583		5,142	POST OCUPAT
170	7	moasa principala	5	moasa	S	1	3,583		5,142	POST OCUPAT
171	8	moasa principala	5	moasa	S	1	3,583		5,142	POST OCUPAT
172	9	moasa principala	5	moasa	S	1	3,583		5,142	POST OCUPAT
173	10	moasa	2	moasa	S	1	2,704		4,539	POST OCUPAT
174	11	moasa	2	moasa	S	1	2,704		4,539	POST OCUPAT
175	12	asistent medical principal	5	asistenta medicala generala	S	1	3,583		5,142	POST OCUPAT
176	13	asistent medical principal	4	medicina generala	SSD	1	3,227		4,801	POST OCUPAT
177	14	asistent medical principal	5	obstetrica ginecologie	PL	1	3,132		4,859	POST OCUPAT
178	15	asistent medical principal	5	obstetrica ginecologie	PL	1	3,132		4,859	POST OCUPAT
179	16	asistent medical principal	5	obstetrica ginecologie	PL	1	3,132		4,859	POST VACANT
180	17	asistent medical principal	5	obstetrica ginecologie	PL	1	3,132		4,859	POST OCUPAT
181	18	asistent medical principal	5	obstetrica ginecologie	PL	1	3,132		4,859	POST OCUPAT
182	19	asistent medical principal	4	generalist	PL	1	3,055		4,740	POST OCUPAT
183	20	asistent medical principal	5	generalist	PL	1	3,132		4,859	POST OCUPAT
184	21	asistent medical	3	medicina generala	PL	1	2,690		4,564	POST OCUPAT
185	22	infirmiera	5		M/G	1	2,133		3,278	POST OCUPAT
186	23	infirmiera	5		M/G	1	2,133		3,278	POST OCUPAT
187	24	infirmiera	5		M/G	1	2,133		3,278	POST OCUPAT
188	25	infirmiera	5		M/G	1	2,133		3,278	POST OCUPAT
189	26	infirmiera	5		M/G	1	2,133		3,278	POST OCUPAT
190	27	infirmiera	5		M/G	1	2,133		3,278	POST OCUPAT
191	28	infirmiera	5		M/G	1	2,133		3,278	POST OCUPAT
192	29	infirmiera	5		M/G	1	2,133		3,278	POST VACANT
193	30	infirmiera	5		M/G	1	2,133		3,278	POST OCUPAT
194	31	infirmiera	4		M/G	1	2,080		3,198	POST OCUPAT
195	32	ingrijitoare	4		M/G	1	2,050		2,818	POST OCUPAT
196	33	ingrijitoare	4		M/G	1	2,050		2,818	POST OCUPAT
197	34	ingrijitoare	4		M/G	1	2,050		2,818	POST OCUPAT
198	35	ingrijitoare	1		M/G	1	1,900		2,536	POST OCUPAT
199	36	ingrijitoare	5		M/G	1	2,102		2,889	POST OCUPAT
		TOTAL OBSTETRICA-GINECOLOGIE				36	108,941	1,040	187,286	
SECTIA NEONATOLOGIE = 25 PATURI, DIN CARE: COMPARTIMENT PREMATURI = 4 PATURI										
200	1	medic sef sectie	5	neonatologie	S	1	5,128		12,688	POST VACANT
201	2	medic specialist	5	neonatologie	S	1	4,883		12,083	POST OCUPAT
		medic rezident anul V	1	neonatologie	S		3,929		7,848	POST OCUPAT
		medic rezident anul I	baza	neonatologie	S		2,482		5,700	POST OCUPAT
202	3	psiholog specialist	5	psihologie	S	1	4,001		6,351	POST OCUPAT
203	4	asistent medical principal sef	5	medicina generala	PL	1	4,120		5,913	POST OCUPAT
204	5	asistent medical principal	5	medicina generala	PL	1	3,132		4,859	POST OCUPAT
205	6	asistent medical principal	4	medicina generala	PL	1	3,055		4,740	POST OCUPAT
206	7	asistent medical principal	5	medicina generala	PL	1	3,132		4,859	POST OCUPAT

207	8	asistent medical principal		medicina generala	PL		3,132	4,859	POST OCUPAT
208	9	asistent medical principal	4	medicina generala	PL	1	3,055	4,740	POST OCUPAT
209	10	asistent medical principal	5	pediatrie	PL	1	3,132	4,859	POST OCUPAT
210	11	asistent medical principal	5	medicina generala	PL	1	3,132	4,859	POST OCUPAT
211	12	asistent medical principal	5	medicina generala	PL	1	3,132	4,859	POST OCUPAT
212	13	asistent medical principal	5	medicina generala	PL	1	3,132	4,859	POST OCUPAT
213	14	asistent medical	4	medicina generala	PL	1	2,758	4,679	POST OCUPAT
214	15	asistent medical	5	medicina generala	PL	1	2,827	4,796	POST OCUPAT
215	16	asistent medical	2	medicina generala	PL	1	2,563	4,346	POST OCUPAT
216	17	asistent medical	1	medicina generala	PL	1	2,440	4,139	POST VACANT
217	18	asistent medical	4	medicina generala	PL	1	2,758	4,679	POST OCUPAT
218	19	asistent medical	2	medicina generala	PL	1	2,563	4,346	POST VACANT
219	20	asistent medical	3	medicina generala	PL	1	2,690	4,564	POST OCUPAT
220	21	infirmiera	5		M/G	1	2,133	3,278	POST VACANT
221	22	infirmiera	5		M/G	1	2,133	3,278	POST OCUPAT
222	23	infirmiera	3		M/G	1	2,030	3,120	POST OCUPAT
223	24	infirmiera	5		M/G	1	2,133	3,278	POST OCUPAT
224	25	infirmiera	5		M/G	1	2,133	3,278	POST OCUPAT
225	26	infirmiera	2		M/G	1	1,933	2,971	POST OCUPAT
226	27	infirmiera	4		M/G	1	2,080	3,198	POST OCUPAT
227	28	ingrijitoare	5		M/G	1	2,102	2,889	POST VACANT
228	29	ingrijitoare	5		M/G	1	2,102	2,889	POST VACANT
		TOTAL NEONATOLOGIE				29	83,671	144,828	
SECTIA PEDIATRIE = 35 PATURI, DIN CARE: COMPARTIMENT RECUPERARE PEDIATRICA = 5 PATURI									
229	1	medic sef sectie	5	pediatrie	S	1	4,649	11,500	POST VACANT
230	2	medic specialist	3	pediatrie	S	1	4,881	12,075	POST OCUPAT
231	3	medic specialist	2	pediatrie	S	1	4,427	10,952	POST OCUPAT
232	4	medic specialist	2	pediatrie	S	1	4,427	10,952	POST OCUPAT
		medic rezident anul V	1	pediatrie	S		3,929	7,848	POST OCUPAT
233	5	asistent medical principal sef	3	generalist	PL	1	4,304	5,913	POST OCUPAT
234		asistent medical principal sef sectie	4	generalist	PL	1	4,121	5,913	POST OCUPAT
235	6	asistent medical principal	5	asistenta medicala generala	S	1	3,583	5,142	POST OCUPAT
236	7	asistent medical principal	5	asistenta medicala generala	S	1	3,583	5,142	POST OCUPAT
237	8	asistent medical principal	2	asistenta medicala generala	PL	1	2,563	4,346	POST OCUPAT
238	9	asistent medical principal	5	medicina generala	PL	1	3,132	4,859	POST VACANT
239	10	asistent medical principal	5	pediatrie	PL	1	3,132	4,859	POST OCUPAT
240	11	asistent medical principal	5	pediatrie	PL	1	3,132	4,859	POST VACANT
241	12	asistent medical principal	5	medicina generala	PL	1	3,132	4,859	POST OCUPAT
242	13	asistent medical principal	5	medicina generala	S	1	3,583	5,142	POST OCUPAT
243	14	asistent medical principal	5	pediatrie	PL	1	3,132	4,859	POST OCUPAT
244	15	asistent medical principal	4	generalist	PL	1	3,055	4,740	POST OCUPAT
245	17	asistent medical	2	medicina generala	PL	1	2,563	4,346	POST OCUPAT
246	18	asistent medical	2	nutritie si dietetica	PL	1	2,563	4,346	POST OCUPAT

247	19	infirmiera			M/G		2,133	3,278	POST OCUPAT
248	20	infirmiera	5		M/G	1	2,133	3,278	POST OCUPAT
249	21	infirmiera	4		M/G	1	2,080	3,198	POST OCUPAT
250	22	infirmiera	5		M/G	1	2,133	3,278	POST OCUPAT
251	23	infirmiera	3		M/G	1	2,030	3,120	POST OCUPAT
252	24	infirmiera	5		M/G	1	2,133	3,278	POST OCUPAT
253	25	infirmiera	5		M/G	1	2,133	3,278	POST OCUPAT
254	26	infirmiera	3		M/G	1	2,030	3,120	POST OCUPAT
255	27	infirmiera	3		M/G	1	2,030	3,120	POST OCUPAT
256	28	infirmiera	5		M/G	1	2,133	3,278	POST VACANT
257	29	infirmiera	3		M/G	1	2,030	3,120	POST VACANT
258	30	ingrijitoare	4		M/G	1	2,050	2,818	POST OCUPAT
259	31	ingrijitoare	4		M/G	1	2,050	2,818	POST OCUPAT
260	32	ingrijitoare	4		M/G	1	2,050	2,818	POST OCUPAT
261	33	ingrijitoare	3		M/G	1	2,000	2,749	POST OCUPAT
		TOTAL PEDIATRIE				33	99,039	169,201	
COMPARTIMENT DE PRIMIRE URGENTE									
262	1	medic specialist sef CPU	5	medicina de urgenta	S	1	6,875	13,814	POST OCUPAT
263	2	medic specialist	2	medicina de urgenta	S	1	5,278	11,924	POST OCUPAT
264	3	medic specialist	4	medicina de urgenta	S	1	5,679	12,835	POST VACANT
265	4	medic specialist	4	medicina de urgenta	S	1	5,679	12,835	POST VACANT
266	5	medic specialist	2	pediatrie	S	1	5,278	11,924	POST VACANT
267	6	medic	2	medicina de urgenta	S	1	3,978	8,241	POST OCUPAT
		medic rezident anul I	baza	medicina de urgenta	S		2,769	5,700	POST OCUPAT
268	7	asistent medical principal sef	5	asistenta medicala generala	S	1	4,950	6,641	POST OCUPAT
269	8	asistent medical principal	4	asistenta medicala generala	S	1	4,199	5,634	POST OCUPAT
270	9	asistent medical principal	3	medicina generala	SSD	1	3,594	5,171	POST OCUPAT
271	10	asistent medical principal	3	medicina generala	SSD	1	3,594	5,171	POST OCUPAT
272	11	asistent medical principal	5	medicina generala	PL	1	3,699	5,184	POST OCUPAT
273	12	asistent medical principal	5	medicina generala	PL	1	3,699	5,184	POST OCUPAT
274	13	asistent medical principal	3	generalist	PL	1	3,520	4,933	POST OCUPAT
275	14	asistent medical principal	3	medicina generala	PL	1	3,520	4,933	POST OCUPAT
276	15	asistent medical principal	5	medicina generala	PL	1	3,699	5,184	POST OCUPAT
277	16	asistent medical	5	asistenta medicala generala	PL	1	3,334	4,985	POST OCUPAT
278	17	asistent medical	5	medicina generala	PL	1	3,334	4,985	POST OCUPAT
279	18	asistent medical	5	medicina generala	PL	1	3,334	4,985	POST OCUPAT
280	19	asistent medical	2	medicina generala	PL	1	3,023	4,518	POST OCUPAT
281	20	asistent medical	2	medicina generala	PL	1	3,023	4,518	POST OCUPAT
282	21	asistent medical	2	medicina generala	PL	1	3,023	4,518	POST OCUPAT
283	22	asistent medical	2	medicina generala	PL	1	3,023	4,518	POST OCUPAT
284	23	asistent medical	1	medicina generala	PL	1	2,879	4,302	POST OCUPAT
285	24	asistent medical	3	medicina generala	PL	1	3,174	4,744	POST OCUPAT
286	25	registrator medical principal	5		M	1	2,902	3,944	POST OCUPAT

287	26	registrator medical principal			M		2,902	3,944	POST OCUPAT
288	27	registrator medical principal	2		M	1	2,630	3,574	POST OCUPAT
289	28	registrator medical	2		M	1	2,414	3,406	POST OCUPAT
290	29	registrator medical	4		M	1	2,599	3,667	POST OCUPAT
291	30	registrator medical	5		M	1	2,664	3,759	POST OCUPAT
292	31	brancardier	3		M/G	1	2,167	2,862	POST OCUPAT
293	32	brancardier	3		M/G	1	2,167	2,862	POST OCUPAT
294	33	brancardier	5		M/G	1	2,275	3,007	POST OCUPAT
295	34	brancardier	5		M/G	1	2,275	3,007	POST OCUPAT
296	35	brancardier	3		M/G	1	2,167	2,862	POST OCUPAT
297	36	brancardier	5		M/G	1	2,275	3,007	POST OCUPAT
298	37	brancardier	4		M/G	1	2,220	2,933	POST OCUPAT
299	38	brancardier	5		M/G	1	2,275	3,007	POST OCUPAT
300	39	infirmiera	3		M/G	1	2,199	3,240	POST OCUPAT
301	40	infirmiera	3		M/G	1	2,199	3,240	POST OCUPAT
302	41	infirmiera	5		M/G	1	2,310	3,404	POST OCUPAT
303	42	infirmiera	5		M/G	1	2,310	3,404	POST VACANT
304	43	infirmiera	3		M/G	1	2,199	3,240	POST OCUPAT
305	44	infirmiera	4		M/G	1	2,254	3,321	POST OCUPAT
306	45	infirmiera	4		M/G	1	2,254	3,321	POST OCUPAT
307	46	infirmiera	3		M/G	1	2,199	3,240	POST OCUPAT
308	47	ingrijitoare	3		M/G	1	2,167	2,862	POST OCUPAT
309	48	ingrijitoare	3		M/G	1	2,167	2,862	POST OCUPAT
310	49	ingrijitoare	4		M/G	1	2,220	2,933	POST OCUPAT
311	50	ingrijitoare	5		M/G	1	2,275	3,007	POST OCUPAT
312	51	ingrijitoare	3		M/G	1	2,167	2,862	POST OCUPAT
		TOTAL C.P.U.				51	161,009	254,158	
FARMACIE - SPITAL									
313	1	farmacist sef	grad I	farmacie	S	1	6,026	8,717	POST OCUPAT
314	2	farmacist specialist	5	farmacie	S	1	4,883	7,799	POST OCUPAT
315	3	asistent medical	3	farmacie	PL	1	2,690	4,564	POST OCUPAT
316	4	asistent medical principal	5	farmacie	PL	1	3,132	4,859	POST VACANT
317	5	asistent medical principal	3	farmacie	PL	1	2,982	4,624	POST OCUPAT
318	6	asistent medical principal	4	farmacie	PL	1	3,055	4,740	POST OCUPAT
319	7	asistent medical	3	farmacie	PL	1	2,690	4,564	POST OCUPAT
		TOTAL FARMACIE				7	25,458	39,867	
LABORATOR RECUPERARE, MEDICINA FIZICA SI BALNEOLOGIE									
320	1	medic specialist	2	balneofizioterapie	S	1	4,427	10,952	POST OCUPAT
321	2	kinetoterapeut	3	kinetoterapie	S	1	2,875	5,910	POST OCUPAT
322	4	kinetoterapeut	2	kinetoterapie	S	1	2,739	5,628	POST VACANT
323	3	asistent medical principal	5	balneofizioterapie	PL	1	3,132	5,913	POST OCUPAT

324	5	asistent medical principal		balneofizioterapie	PL		3,219		4,859	POST OCUPAT
325	6	asistent medical principal		balneofizioterapie	PL		3,132		4,859	POST OCUPAT
326	7	asistent medical principal	5	balneofizioterapie	PL	1	3,132		4,859	POST VACANT
327	8	asistent medical principal	5	balneofizioterapie	PL	1	3,132		4,859	POST OCUPAT
328	9	asistent medical principal	5	balneofizioterapie	PL	1	3,132		4,859	POST OCUPAT
329	10	infirmiera	3		M/G	1	2,030		3,120	POST OCUPAT
330	11	infirmiera	4		M/G	1	2,080		3,198	POST OCUPAT
		TOTAL LABORATOR				11	33,030		59,016	
LABORATOR ANATOMIE PATOLOGICA										
331	1	medic primar - coordonator laborator	3	anatomie patologica	S	1	9,440		20,224	POST OCUPAT
332	2	medic primar	3	anatomie patologica	S	1	11,238		19,261	POST OCUPAT
333	3	asistent medical principal coordonator	5	laborator	PL	1	6,162		8,092	POST OCUPAT
334	4	asistent medical principal	5	laborator	PL	1	6,317		6,317	POST OCUPAT
335	5	asistent medical	4	laborator - necropsii	G	1	5,763		5,925	POST OCUPAT
336	6	ingrijitor	5		G	1	3,230		4,004	POST OCUPAT
		TOTAL LABORATOR				6	32,710		43,599	
LABORATOR ANALIZE MEDICALE										
337	1	biolog sef laborator	3	biochimie medicala, imunologie clinica si managementul calitatii in laboratorul medical	S	1	4,431		7,382	POST VACANT
338	2	medic primar	3	medicina de laborator	S	1	5,335		14,520	POST VACANT
339	3	medic specialist	2	medicina de laborator	S	1	4,427		10,952	POST VACANT
340	4	farmacist	4	farmacie generala	S	1	3,594		6,406	POST VACANT
341	5	biolog medical principal	3	biochimie medicala	S	1	4,122		6,867	POST VACANT
342	6	biolog medical specialist	2	biologie medicala	S	1	3,297		5,756	POST VACANT
343	7	biolog	5	biologie	S	1	3,333		5,978	POST VACANT
344	8	biolog	2	biologie	S	1	3,022		5,418	POST VACANT
345	9	biolog	2	biologie	S	1	3,022		5,418	POST VACANT
346	10	biolog	3	biologie	S	1	3,172		5,689	POST VACANT
347	11	asistent medical	2	laborator	S	1	2,704		4,539	POST VACANT
348	12	asistent medical principal	5	laborator	PL	1	3,132		4,859	POST VACANT
349	13	asistent medical principal	5	laborator	PL	1	4,121		5,913	POST VACANT
350	14	asistent medical principal	5	laborator	PL	1	3,132		4,859	POST VACANT
351	15	asistent medical principal	5	laborator	PL	1	3,132		4,859	POST VACANT
352	16	asistent medical principal sef	5	laborator	PL	1	4,121		5,913	POST VACANT
353	17	asistent medical	4	generalist	PL	1	2,758		4,679	POST VACANT
354	18	registrator medical	5		M	1	2,505		3,557	POST VACANT
355	19	ingrijitoare	5		M/G	1	2,102		2,889	POST VACANT
		TOTAL LABORATOR				19	65462	0	116453	
CABINET DIABET ZAHARAT, NUTRITIE SI BOLI METABOLICE										

356	1	medic specialist	2	diabet zaharat, nutritie si boli metabolice	S		4,427	10,952	POST VACANT
357	2	asistent medical principal	4	generalist	PL	1	3,055	4,740	POST OCUPAT
		TOTAL CABINET DIABET				1	7,482	15,692	
CABINET ONCOLOGIE MEDICALA									
358	1	medic specialist	2	oncologie medicala	S	1	4,427	10,952	POST VACANT
		TOTAL CABINET ONCOLOGIE MEDICALA				1	4427	10952	
COMPARTIMENT DE SUPAVEGHERE, PREVENIRE SI LIMITARE A INFECTIILOR ASOCIATE ASISTENTEI MEDICALE									
359	1	medic specialist	2	epidemiologie	S	1	4,427	10,952	POST VACANT
360	2	medic specialist	2	boli infectioase	S	1	4,427	10,952	POST VACANT
361	3	asistent medical	2	generalist	PL	1	2,563	4,346	POST OCUPAT
		TOTAL C.P.C.I.N.				3	11,417	26,250	
STATIA DE STERILIZARE									
362	1	asistent medical principal	5	medicala	PL	1	3,132	4,859	POST VACANT
363	2	asistent medical principal	5	generalist	PL	1	3,132	4,859	POST OCUPAT
364	3	asistent medical principal	3	generalist	PL	1	2,982	4,624	POST VACANT
365	4	asistent medical principal	4	generalist	PL	1	3,055	4,740	POST OCUPAT
366	5	asistent medical	3	generalist	PL	1	2,690	4,564	POST OCUPAT
367	6	tehnician aparatura medicala	5	aparatura medicala	M	1	2,534	4,672	POST OCUPAT
368	7	ingrijitoare	4		G	1	2,050	2,818	POST VACANT
		TOTAL STERILIZARE				7	19,575	31,136	
COMP. STATISTICA									
369	1	statistician medical principal	4	statistica	M	1	2,488	3,523	POST OCUPAT
370	2	registrator medical	2		M	1	2,270	3,224	POST OCUPAT
COMP. INTERNARI									
371	1	registrator medical	2		M	1	2,414	3,406	POST VACANT
372	2	registrator medical	5		M	1	2,505	3,557	POST OCUPAT
373	3	garderobier	5		M	1	2,737	3,175	POST OCUPAT
		TOTAL COMP. STATISTICA SI INTERNARI				5	12,414	12,414	
SPALATORIE									
374	1	spalatoarea cu gestiune	3		M/G	1	2,050	2,818	POST OCUPAT
375	2	spalatoarea	baza		M/G	1	1,900	2,425	POST OCUPAT
376	3	spalatoarea	5		M/G	1	2,102	2,889	POST OCUPAT
377	4	spalatoarea	5		M/G	1	2,102	2,889	POST OCUPAT
378	5	spalatoarea	5		M/G	1	2,102	2,889	POST OCUPAT
379	6	spalatoarea	5		M/G	1	2,102	2,889	POST OCUPAT
		TOTAL SPALATORIE				6	10,308	13,981	POST OCUPAT

BUCATARIE DIETETICA								
380	1	asistent medical principal	4	dietetica si nutritie	PL	1	3,055	4,740 POST OCUPAT
APARAT FUNCTIONAL - TESA								
SERVICIUL DE MANAGEMENT AL CALITATII SERVICIILOR DE SANATATE								
381	1	Sef serviciu	5	managementul calitatii serviciilor de sanatate	S	1	5,265	5,908 POST VACANT
382	2	Medic primar	5	managementul calitatii serviciilor de sanatate	S	1	5,605	15,256 POST VACANT
383	3	Referent de specialitate gradul III	3	managementul calitatii serviciilor de sanatate	S	1	2,707	3,827 POST VACANT
384	4	Referent gradul II	5	managementul calitatii serviciilor de sanatate	S	1	2,440	3,556 POST VACANT
385	5	Referent de specialitate grad II	4	managementul calitatii serviciilor de sanatate	S	1	3,343	4,260 POST VACANT
TOTAL SERVICIU						5	14,095	26,899
COMPARTIMENT JURIDIC								
386	1	consilier juridic IA	5	juridice	S	1	4,182	4,933 POST OCUPAT
BIROU RUNOS								
387	1	economist IA - sef birou	grad II	economice	S	1	4,756	5,739 POST OCUPAT
388	2	economist IA	5	economice	S	1	4,182	4,933 POST OCUPAT
389	3	economist IA	5	economice	S	1	4,182	4,933 POST OCUPAT
390	4	economist IA	5	economice	S	1	4,182	4,933 POST OCUPAT
TOTAL BIROU RUNOS						4	17,302	20,538
BIROU FINANCIAR-CONTABILITATE								
391	1	economist IA - sef birou	grad II	economice	S	1	4,756	5,739 POST OCUPAT
392	2	economist IA	5	economice	S	1	4,182	4,933 POST OCUPAT
393	3	economist IA	5	economice	S	1	4,182	4,933 POST OCUPAT
394	4	economist II	2	economice	S	1	2,578	3,645 POST OCUPAT
395	5	contabil IA	5	contabilitate	M	1	2,712	3,817 POST OCUPAT
TOTAL BIROU FINANCIAR-CONTABILITATE						5	18,410	23,067
BIROU ACHIZITII PUBLICE								
396	1	consilier juridic IA	5	economice	S	1	4,182	4,933 POST OCUPAT
397	2	analist-programator grad I	2	informatica	S	1	3,105	3,981 POST OCUPAT
398	3	economist II	5	economice	S	1	3,128	4,423 POST OCUPAT
TOTAL COMP. ACHIZITII PUBLICE						3	10,415	13,337

COMPARTIMENT INFORMATICA										
399	1	economist IA	4	economice	S		4,079	4,812	POST OCUPAT	
COMPARTIMENT SECURITATEA MUNCII, PSI, PROTECTIE CIVILA SI SITUATII DE URGENTA										
400	1	Economist IA	5	economice	S	1	4,182	4,933	POST OCUPAT	
COMPARTIMENT AUDIT INTERN										
401	1	auditor grad 1	5	economic	S	1	4,373	4,781	POST VACANT	
SERVICIUL APROVIZIONARE-ADMINISTRATIV-TRANSPORT-PAZA										
402	1	sef serviciu	grad II 5	tehnice	S	1	5,265	5,908	POST OCUPAT	
403	2	economist IA	5		S	1	4,182	4,933	POST OCUPAT	
404	3	contabil IA	5	contabilitate	M	1	2,712	3,817	POST OCUPAT	
405	4	referent tr. II	5		M	1	2440	3556	POST OCUPAT	
406	5	arhivar	4		M	1	2,111	3,335	POST OCUPAT	
407	6	casier	5		M	1	2,164	3,418	POST OCUPAT	
408	7	secretar-dactilograf IA	3		M	1	2,282	3,453	POST OCUPAT	
409	8	sofer II	5		M	1	2,335	3,504	POST OCUPAT	
410	9	sofer II	5		M	1	2,335	3,504	POST OCUPAT	
411	10	portar	5		M/G	1	2,093	2,489	POST VACANT	
412	11	portar	4		M/G	1	2,042	2,814	POST OCUPAT	
413	12	portar	5		M/G	1	2,093	2,885	POST OCUPAT	
414	13	portar	5		M/G	1	2,093	2,885	POST OCUPAT	
415	14	portar	5		M/G	1	2,093	2,885	POST OCUPAT	
416	15	ingrijitoare	3		M/G	1	2,000	2,749	POST VACANT	
		TOTAL SERV.APROV., AD-TIV, TRANSP., PAZA					15	36,240	49,386	
COMPARTIMENT DE INTRETINERE-REPARATII CLADIRI										
417	1	MUNCITOR TR.I	4	electrician	M/G	1	2,384	3,532	POST OCUPAT	
418	2	MUNCITOR TR.I	5	electrician	M/G	1	2,444	3,620	POST OCUPAT	
419	3	MUNCITOR TR.III	5	instalator sanitar	M/G	1	2,148	3,270	POST OCUPAT	
420	4	MUNCITOR TR.I	5	instalator sanitar	M/G	1	2,444	3,620	POST VACANT	
421	5	MUNCITOR TR.I	5	lenjereasa	M/G	1	2,444	3,620	POST OCUPAT	
422	6	MUNCITOR TR.I	5	sudor	M/G	1	2,444	3,620	POST OCUPAT	
423	7	MUNCITOR TR.I	5	zidar	M/G	1	2,444	3,620	POST OCUPAT	
424	8	MUNCITOR TR.I	5	zidar	M/G	1	2,444	3,620	POST OCUPAT	
425	9	MUNCITOR TR.I	5	zugrav-vopsitor	M/G	1	2,444	3,620	POST OCUPAT	
426	10	MUNCITOR TR.II	2	zidar-faiantar	M/G	1	2,074	3,260	POST OCUPAT	
427	11	MUNCITOR TR.I	5	fochist - sef formatie	M/G	1	2,506	3,711	POST VACANT	
428	12	MUNCITOR TR.I	5	fochist	M/G	1	2,444	3,620	POST OCUPAT	
429	13	MUNCITOR TR.I	5	fochist	M/G	1	2,444	3,620	POST OCUPAT	
430	14	MUNCITOR TR.I	5	fochist	M/G	1	2,444	3,620	POST OCUPAT	
431	15	MUNCITOR TR.III	5	fochist	M/G	1	2,148	3,270	POST OCUPAT	

432	16	MUNCITOR TR.I		lacatus mecanic	M/G		2,444		3,620	POST OCUPAT
433	17	MUNCITOR TR.I	5	lacatus mecanic	M/G	1	2,444		3,620	POST OCUPAT
434	18	MUNCITOR TR.II	5	lacatus mecanic	M/G	1	2,179		3,426	POST VACANT
435	19	MUNCITOR TR.II	5	lacatus mecanic	M/G	1	2,179		3,426	POST OCUPAT
436	20	MUNCITOR TR.III	5	telefonista	M/G	1	2,148		3,270	POST OCUPAT
437	21	MUNCITOR TR.III	5	telefonista	M/G	1	2,148		3,270	POST OCUPAT
438	22	MUNCITOR TR.III	5	telefonista	M/G	1	2,148		3,270	POST OCUPAT
439	23	MUNCITOR TR.IV	5	liftier	M/G	1	2,093		3,259	POST OCUPAT
440	24	MUNCITOR TR.IV	3	liftier	M/G	1	1,992		3,101	POST OCUPAT
441	25	MUNCITOR TR.IV	5	liftier	M/G	1	2,093		3,259	POST OCUPAT
442	26	MUNCITOR TR.IV	5	liftier	M/G	1	2,093		3,259	POST OCUPAT
443	27	MUNCITOR TR.IV	5	liftier	M/G	1	2,093		3,259	POST VACANT
444	28	MUNCITOR TR.IV	5	liftier	M/G	1	2,093		3,259	POST OCUPAT
445	29	MUNCITOR NECALIFICAT TR.I	5		M/G	1	1,945		2,553	POST OCUPAT
446	30	MUNCITOR NECALIFICAT TR.I	3		M/G	1	1,900		2,454	POST OCUPAT
447	31	MUNCITOR NECALIFICAT TR.I	3		M/G	1	1,900		2,454	POST VACANT
448	32	MUNCITOR NECALIFICAT TR.I	5		M/G	1	1,945		2,553	POST OCUPAT
		TOTAL COMP. INTRETINERE				32	71,537		106,555	
		TOTAL SPITAL				448	1,413,929	3,120	2,376,574	
		AMBULATORIU INTEGRAT								
		CABINET CARDIOLOGIE								
449	1	medic specialist	2	cardiologie	S	1	4,427		10,952	POST VACANT
		CABINET NEFROLOGIE								
450	1	medic specialist	2	nefrologie	S	1	4,427		10,952	POST VACANT
		CABINET ORTOPEDIE SI TRAUMATOLOGIE								
451	1	medic specialist	2	ortopedie si traumatologie	S	1	4,427		10,952	POST VACANT
		CABINET UROLOGIE								
452	1	medic specialist	2	urologie	S	1	4,427		10,952	POST VACANT
		CABINET BOLI INFECTIOASE								
453	1	medic specialist	2	boli infectioase	S	1	4,427		10,952	POST VACANT
		CABINET PSIHIATRIE								
454	1	medic specialist	2	psihiatrie	S	1	4,427		10,952	POST VACANT
		CABINET DERMATOVENEROLOGIE								
455	1	medic specialist	2	dermatovenerologie	S	1	4,427		10,952	POST VACANT

COMPARTIMENT ENDOSCOPIE DIGESTIVA									
456	1	medic specialist	2	gastroenterologie	S	1	4,427	10,952	POST VACANT
LABORATOR RADIOLOGIE SI IMAGISTICA MEDICALA									
457	1	medic primar coordonator laborator	4	radiologie si imagistica medicala	S	1	5,469	15,627	POST OCUPAT
458	2	medic specialist	2	radiologie si imagistica medicala	S	1	4,427	10,952	POST VACANT
459	3	medic specialist	2	radiologie si imagistica medicala	S	1	4,427	10,952	POST VACANT
		medic rezident anul IV	1	radiologie si imagistica medicala	S		3,929	7,848	POST OCUPAT
460	4	fizician medical	3	fizica	S	1	3,462	6,044	POST OCUPAT
461	5	asistent medical principal	5	radiologie	PL	1	3,132	4,859	POST OCUPAT
462	6	asistent medical principal coordonator	5	radiologie	PL	1	4,121	5,913	POST OCUPAT
463	7	asistent medical principal	5	radiologie-imagistica	PL	1	3,132	4,859	POST OCUPAT
464	8	asistent medical principal	5	radiologie-imagistica	PL	1	3,132	4,859	POST OCUPAT
465	9	asistent medical principal	4	radiologie-imagistica	PL	1	3,055	4,740	POST OCUPAT
466	10	asistent medical principal	4	radiologie-imagistica	PL	1	3,055	4,740	POST OCUPAT
467	11	asistent medical principal	3	radiologie	PL	1	2,982	4,624	POST OCUPAT
468	12	asistent medical	4	radiologie-imagistica	PL	1	2,758	4,679	POST OCUPAT
469	13	asistent medical	3	radiologie-imagistica	PL	1	2,690	4,564	POST OCUPAT
470	14	asistent medical	2	radiologie-imagistica	PL	1	2,563	4,346	POST OCUPAT
		TOTAL AMBULATORIU INTEGRAT				22	87,750	0	187,222
		TOTAL SPITAL				448	1,413,425	3,120	2,373,289
		TOTAL CJAS				470	1,501,175	3,120	2,560,511

CAPITOLUL "TRANSFERURI" (BUGET DE STAT)

CABINET PLANIFICARE FAMILIALA									
1	1	medic primar	2	obstetrica-ginecologie	S	1	5,082	13,828	POST OCUPAT
2	2	asistent medical principal	5	generalist	PL	1	3,132	4,859	POST OCUPAT
		TOTAL CAB.PLANIFICARE				2	8,214	18,687	
DISPENSAR T.B.C.									
3	1	medic primar	4	pneumologie	S	1	5,469	1,040	14,883 POST OCUPAT
4	2	asistent medical principal	5	generalist	PL	1	3,132	4,859	POST OCUPAT
5	3	asistent medical principal	5	generalist	PL	1	3,132	4,859	POST OCUPAT
6	4	asistent medical principal	5	generalist	PL	1	3,132	4,859	POST OCUPAT
7	5	asistent medical principal	5	generalist	PL	1	3,132	4,859	POST OCUPAT
8	6	asistent medical principal	5	radiologie	PL	1	3,132	4,859	POST VACANT
		TOTAL DISP. TBC				6	21129	1040	39178

MEDICI REZIDENTI ANUL V									
9	1	MEDIC REZIDENT AN V	1	anestezie si terapie intensiva	S	1	3,788	7,848	POST VACANT
10	2	MEDIC REZIDENT AN V	1	pediatrie	S	1	3,929	7,848	POST OCUPAT
11	3	MEDIC REZIDENT AN V	1	neonatologie	S	1	3,929	7,848	POST OCUPAT
MEDICI REZIDENTI ANUL IV									
12	4	MEDIC REZIDENT AN IV	1	anestezie si terapie intensiva	S	1	3,788	7,848	POST OCUPAT
13	5	MEDIC REZIDENT AN IV	1	radiologie si imagistica medicala	S	1	3,929	7,848	POST OCUPAT
MEDICI REZIDENTI ANUL I									
14	6	MEDIC REZIDENT AN II	baza	anestezie si terapie intensiva	S	1	3,089	6,100	POST OCUPAT
15	7	MEDIC REZIDENT AN II	baza	neonatologie	S	1	2,764	6,100	POST OCUPAT
16	8	MEDIC REZIDENT AN II	baza	medicina de urgenta	S	1	3,089	6,100	POST OCUPAT
		TOTAL REZIDENTI				8	28,305	57,540	
		TOTAL "TRANSFERURI"				16	57,648	1,040	115,405
		TOTAL CJAS				470	1,500,242	3,120	2,559,247
		TOTAL SPITAL				486	1,557,890	4,160	2,674,652
MEDICI DIN AFARA UNITATII CARE PRESTEAZA ORE DE GARDA									
		LINIA DE GARDA MEDICINA DE URGENTA							
1	1	MEDIC SPECIALIST	3	MF cu competenta in urgente prespitalicesti	S		5,542	5,542	contract de munca cu timp partial
2	2	MEDIC SPECIALIST	5	MF cu competenta in urgente prespitalicesti	S		5,822	5,822	contract de munca cu timp partial
		LINIA DE GARDA OBSTETRICA GINECOLOGIE							
3	1	MEDIC PRIMAR	5				5,605	5,605	contract de munca cu timp partial
		LINIA DE GARDA ATI							
4	1	MEDIC PRIMAR	3	anestezie si terapie intensiva	S		7,123	7,123	contract de munca cu timp partial
5	2	MEDIC SPECIALIST	4	anestezie si terapie intensiva	S		5,679	5,679	contract de munca cu timp partial
6	3	MEDIC SPECIALIST	5	anestezie si terapie intensiva	S		5,822	5,822	contract de munca cu timp partial
7	4	MEDIC SPECIALIST	3	anestezie si terapie intensiva	S		5,542	5,542	contract de munca cu timp partial
8	5	MEDIC PRIMAR	5	anestezie si terapie intensiva	S		7,484	7,484	contract de munca cu timp partial
9	6	MEDIC SPECIALIST	2	anestezie si terapie intensiva	S		5,278	5,278	contract de munca cu timp partial

10	7	MEDIC PRIMAR		anestezie si terapie intensiva	S	7,484	7,484	contract de munca cu timp partial
11	8	MEDIC PRIMAR	3	anestezie si terapie intensiva	S	7,123	7,123	contract de munca cu timp partial
12	9	MEDIC PRIMAR	4	anestezie si terapie intensiva	S	7,302	7,302	contract de munca cu timp partial
13	10	MEDIC PRIMAR	3	anestezie si terapie intensiva	S	7,123	7,123	contract de munca cu timp partial
14	11	MEDIC SPECIALIST	2	anestezie si terapie intensiva	S	5,278	5,278	contract de munca cu timp partial
15	12	MEDIC SPECIALIST	2	anestezie si terapie intensiva	S	5,278	5,278	contract de munca cu timp partial
16	13	MEDIC REZIDENT	4	anestezie si terapie intensiva	S	4,282	4,281	contract de munca cu timp partial
		LINIA DE GARDA PEDIATRIE						
17	1	MEDIC PRIMAR	5	pediatrie	S	5,605	5,605	contract de munca cu timp partial
18	2	MEDIC SPECIALIST	5	medicina de familie (facultatea de pediatrie)	S	4,883	4,883	contract de munca cu timp partial
		LINIA DE GARDA CHIRURGIE GENERALA						
19	1	MEDIC PRIMAR	5	chirurgie generala	S	5,605	5,605	contract de munca cu timp partial
20	2	MEDIC SPECIALIST	2	chirurgie generala	S	4,427	4,427	contract de munca cu timp partial
21	3	MEDIC PRIMAR	4	chirurgie generala	S	5,469	5,469	contract de munca cu timp partial

MANAGER,
AGLITOIU DUMITRU EUGEN

DIRECTOR FINANCIAR-CONTABIL,
EC. STEFAN GEORGE LIVIU

SEF BIROU RUNOS,
EC. PELTEA MIRELA



SECTIA/COMP./LAB./CABINET	NUMAR PATURI	MEDICI		ALT S.SAN. CU S.S.		ASIS. MED.		Registratori		INFIRM		INGRIJ.,SPAL. BRANCARDIERI		PERS. TESA		Muncitori		TOTAL POSTURI
		normal	ocupat	normal	ocupat	normal	ocupat	normal	ocupat	normal	ocupat	normal	ocupat	normal	ocupat	normal	ocupat	OCUPATE
SERV. MANAGEMENTUL CALITATII														5	2.5			2.5
PERSONAL TESA+PAZA+SOFERI														25	22	7	6	28
MUNCITORI																37	29	29
AMBULATORIU INTEGRAT (NEFUNCTIONAL), din care:																		
CABINET CARDIOLOGIE		1	0			1	0											0
CABINET NEFROLOGIE		1	0			1	0											0
CABINET ORTOPEDIE SI TRUMANTOLOGIE		1	0			1	0											0
CABINET UROLOGIE		1	0			1	0											0
CABINET BOLI INFECTIOASE		1	0			1	0											0
CABINET PSIHIATRIE		1	0			1	0											0
CABINET DERMATOVENERILOGIE		1	0			1	0											0
COMP.ENDOSCOPIE DIGESTIVA		1	0			1	0											0
LABORATOR RADIOLOGIE		2	2.5	1	1	10	10											13.5
CABINET PLANIFICARE FAMILIALA		1	1			1	1											2
DISPENSAR TBC		2	1			5	4											5
MEDICI REZIDENTI PE POST		9	7															7
TOTAL SPITAL	310	74	48.5	14	12.5	205	185	10	9	85	74	53	47	33	27.5	45	36	439.5

NOTA: POSTURI FIXE GENERALE, TOTAL, DIN CARE:	N	E
- Laborator radiologie si imagistica medicala	14	13
- Laborator analize medicale	19	14
- Sali de operatii si sala de nasteri	22	22
- Sterilizarea	6	6
- Dietetica	1	1
- Statistica medicala+internari	5	5
- Serv. Managementul calitatii	3	3

Structura de personal posturi fixe:	N	E
- medici	5	3
- alt personal san.cu SS	9	8
- personal sanitar mediu	44	42
- infirmiere	5	5
- ingrijitoare	3	2
- garderobier	1	1
- personal managementul calitatii	3	3
	70	64



MANAGER,
AGLITOIU DUMITRU-EUGEN

DIRECTOR FINANCIAR-CONTABIL,
EC. STEFAN GEORGE-LIVIU

SEF BIROU RUNOS,
EC. PELTEA MIRELA

CONSILIUL LOCAL MEDGIDIA
 SPITALUL MUNICIPAL MEDGIDIA
 Str. Ion Creangă nr.18
 Tel./Fax: 0241810690/0241810931
 CUI: 4300752

APROBAT,
 PRIMĂRIA MUNICIPIULUI MEDGIDIA
 PRIMAR,
 VRABIE VALENTIN

NR. 3466 / 17.03.2021

STAT DE FUNCTII

NR. CRT	NR. CRT	FUNCTIA, GRADUL SAU TREPATA PROFESIONALA CONFORM Legii nr. 153/2017	Grad/Gradația	SPECIALITATEA	NIVEL STU DII	CUAN TUM POST	SALARIUL DE BAZA LEGEA NR. 153/2017 01.01.2018	spor doctor at	SALARIUL DE BAZA LEGEA NR. 153/2017 01.01.2019	NUMELE SI PRENUMELE	Observatii
0	0	1	2	3	4	5	6	7	8	9	10
		COMITET DIRECTOR - SPITAL - 310 DE PATURI									
1	1	Manager	grad II	asistenta medicala generala; master in managementul sanitar	S	1	8,125		17,221	AGLITOIU DUMITRU EUGEN	post ocupat prin concurs
2	2	Director Medical	5	medic primar chirurgie generala	S	1	6,026		16,401	MINCA MANUELA	post ocupat prin concurs
3	3	Director financiar-contabil	grad II	studii economice	S	1	6,875		7,022	STEFAN GEORGE LIVIU	post ocupat prin concurs
		TOTAL COMITET DIRECTOR				3	21,026		40,644		
		ASISTENT MEDICAL SEF UNITATE									
4	1	Asistent medical sef unitate	grad II	medicina generala	PL	1	4,938		6,371	POST VACANT	demisie 01.12.2017 (Stanescu Carmen Daniela numita cu delegatie 6 luni: 01.01.2021-30.06.2021)
		ASISTENT SOCIAL									
5	1	Asistent social	baza	asistență socială	S	1	2,609		4,394	POST VACANT	

SECTIA ATI = 15 PATURI, DIN CARE: COMPARTIMENT PENTRU COPII = 4 PATURI										
6	1	medic sef sectie	5	ATI	S	1	7,858	17,442	POST VACANT	suplimentare post 13.02.2012
7	2	medic specialist coordonator sectie	4	ATI	S	1	5,963	13,477	VASILIU IONUT	
8	3	medic primar	5	ATI	S	1	7,484	16,611	POST VACANT	incetare CMI cu art.55 lit.b la 02.04.2020
9	4	medic specialist	2	ATI	S	1	5,278	11,924	POST VACANT	incetare contract art.55 lit.b la 01.10.2020; Mustafa Kenan angajat temporar
10	5	medic rezident an V	2	ATI	S	1	3,978	8,241	SANDU ANDREEA	suspendare contract (CCC 05.10.2020- 09.08.2022)
		medic rezident anul IV	1	ATI	S		3,788	7,848	BUTNAR ANDA CRISTINA	Rezidentiat pe post 2015 (Transferuri)
		medic rezident anul I	1	ATI	S		2,769	5,700	ILIE DANIELA	Rezidentiat pe post 2019 (Transferuri)
11	6	asistent medical principal sef	5	medicina generala	PL	1	4,304	6,641	MOESCU CRISTIANA MALINA	
12	7	asistent medical principal	5	asistenta medicala generala	S	1	4,304	5,775	IBRAM DERMAN	
13	8	asistent medical principal	5	asistenta medicala generala	S	1	4,304	5,775	MOLACAI SEVGEAN	
14	9	asistent medical principal	5	asistenta medicala generala	S	1	4,304	5,775	SALI DILSEN	
15	10	asistent medical principal	4	medicina generala	SSD	1	3,684	5,301	OPRICA ANTONELA ANGELICA	
16	11	asistent medical principal	5	medicina generala	PL	1	3,699	5,184	TANASE MIOARA LUMINITA	
17	12	asistent medical principal	5	medicina generala	PL	1	3,699	5,184	STAVROSITU SULTANA	
18	13	asistent medical principal	5	medicina generala	PL	1	3,699	5,184	ACMOLA BEIGEAN	
19	14	asistent medical principal	5	medicina generala	PL	1	3,699	5,184	ALIS ZINETI	
20	15	asistent medical principal	5	medicina generala	PL	1	3,699	5,184	CIUREANU CONSTANTA	
21	16	asistent medical principal	5	medicina generala	PL	1	3,699	5,184	LETA VIORICA	
22	17	asistent medical principal	5	medicina generala	PL	1	3,699	5,184	OPREA CATALINA	
23	18	asistent medical principal	5	medicina generala	PL	1	3,699	5,184	SPINU DANIELA	
24	19	asistent medical principal	5	medicina generala	PL	1	3,699	5,184	POST VACANT	pensionare 01.08.2019; Sefchi Diner si Neculai Simona angajati temporar 1/2 norma

25	20	infirmiera	5		G	1	2,310	3,404	BURLACU MIRELA	
26	21	infirmiera	3		G	1	2,199	3,240	MIHOC MARIA	
27	22	infirmiera	4		G	1	2,254	3,321	LUCHIAN VICTORITA	
28	23	infirmiera	4		G	1	2,254	3,321	MARCU CORNELIA	
29	24	infirmiera	5		G	1	2,310	3,404	SERBU ELENA RODICA	
30	25	infirmiera	3		G	1	2,199	3,240	BADITEANU VICTORITA	
31	26	ingrijitoare	3		G	1	2,167	2,862	NEBI FILIZ	
32	27	ingrijitoare	4		G	1	2,275	3,007	IONITA SOFICA	
		TOTAL ATI				27	109,277	182,965		
		UNITATE DE TRANSFUZII SANGUINE								
33	1	medic primar coordonator	3	medicina de laborator	S	1	5,602	15,246	MOLDOVEANU MONICA	
34	2	asistent medical principal coordonator UTS	5	asistenta medicala generala	S	1	4,121	5,913	SAVU GABRIELA	
35	3	asistent medical principal	5	asistenta medicala generala	S	1	3,583	5,142	PREDOIU LENUTA	
36	4	asistent medical principal	5	asistenta medicala generala	S	1	3,583	5,142	PETRE DANIELA	
37	5	asistent medical principal	5	medicina generala	PL	1	3,132	4,859	CHEVAL DANIELA	
38	6	asistent medical	4	medicina generala	PL	1	2,758	4,679	RUSACHE MARIOARA	
		TOTAL U.T.S.				6	22,779	40,981		
SECTIA MEDICINA INTERNA = 75 PATURI, DIN CARE:										
- Comp.diabet zaharat, nutritie si boli metabolice=5 paturi, Comp.reumatologie=5 paturi, Comp.recup.,med.fiz., baln.=5 paturi, Comp.endocrinologie=5 paturi, Comp.cardiologie=5 paturi										
39	1	medic sef sectie	5	medicina interna	S	1	6,938	16,019	POST VACANT	Memedali Ghiulten ocupa cu delegatie postul de sef sectie
40	2	medic primar	3	medicina interna	S	1	5,335	14,520	CURTSEIT AIDAR DENIS	
41	3	medic primar	5	medicina interna	S	1	5,605	15,256	CHIVU MIRELA	
42	4	medic primar	5	medicina interna	S	1	6,938	16,019	MEMEDALI GHIULTEN	numita sef sectie de la data de 04.05.2018

43	5	medic primar	3	medicina interna	S	1	5,335	4,520	ILIE MIHAELA	
44	6	asistent medical principal sef	5	medicina generala	PL	1	4,304	5,913	ISLEAM LACME	numita temporar asistent sef sectie (01.01.2021-30.06.2021)
45	7	asistent medical principal	5	medicina generala	PL	1	3,132	4,859	STANESCU CARMEN DANIELA	numita cu delegatie asistent sef unitate
46	8	asistent medical principal	4	asistenta medicala generala	S	1	3,497	5,016	IORDAN EMILIA RODICA	
47	9	asistent medical principal	5	medicina generala	PL	1	3,132	4,859	ALI SEVGHIN	
48	10	asistent medical principal	5	medicina generala	PL	1	3,132	4,859	CAMARASAN VICTORIA	
49	11	asistent medical principal	5	medicina generala	PL	1	3,132	4,859	GIRBA DANIELA LUMINITA	
50	12	asistent medical principal	5	medicina generala	PL	1	3,132	4,859	ILIESCU MIHAELA	delegata la Lab.analize
51	13	asistent medical principal	5	medicina generala	PL	1	3,132	4,859	MATEI ISABELA	
52	14	asistent medical principal	5	medicina generala	PL	1	3,132	4,859	MINZU VIOLETA	
53	15	asistent medical principal	5	medicina generala	PL	1	3,132	4,859	POST VACANT	pensionare 01.01.2021; Iliescu Daniela angajata temporar
54	16	asistent medical principal	5	medicina generala	PL	1	3,132	4,859	POPA MARIANA	
55	17	asistent medical principal	5	medicina generala	PL	1	3,132	4,859	TELETIN IRINA MIHAELA	
56	18	asistent medical principal	5	medicina generala	PL	1	3,132	4,859	MORARIU ELENA MAGDALENA	
57	19	asistent medical principal	4	medicina generala	PL	1	3,055	4,740	CALIN DANIELA	
58	20	asistent medical principal	3	medicina generala	PL	1	2,982	4,624	AMET NURTEN	
59	21	asistent medical principal	4	medicina generala	PL	1	3,055	4,740	ZAMATRACHE NICOLETA	
60	22	asistent medical principal	5	medicina generala	PL	1	3,132	4,859	MUSLEDIN GHIULGIAN	
61	23	asistent medical principal	4	medicina generala	PL	1	3,055	4,740	CURT-VELI MAZIS	
62	24	asistent medical	baza	medicina generala	PL	1	2,270	3,850	OMER SEVGHIL	
63	25	infirmiera	3		M/G	1	2,030	3,120	MARTINAS RODICA	
64	26	infirmiera	4		M/G	1	2,080	3,198	ICHIM NICOLETA	
65	27	infirmiera	3		M/G	1	2,030	3,120	DUMITRESCU LILIANA	

66	28	infirmiera	5		M/G	1	2,133	3,278	STAN MIRELA	
67	29	infirmiera	5		M/G	1	2,133	3,278	COCHES VICTORIA	
68	30	infirmiera	3		M/G	1	2,030	3,120	MOT MARIA	
69	31	infirmiera	3		M/G	1	2,030	3,120	SUBTIRICA MARIA	
70	32	infirmiera	3		M/G	1	2,030	3,120	ABUDICIOAEI MARIETA	
71	33	ingrijitoare	3		M/G	1	2,000	2,749	BECU LILIANA	
72	34	ingrijitoare	1		M/G	1	1,900	2,536	MINCA FLORENTINA	
73	35	ingrijitoare	3		M/G	1	2,000	2,749	BARBU CONSTANTA	
74	36	ingrijitoare	5		M/G	1	2,102	2,889	ORASANU ELISABETA	
75	37	ingrijitoare	4		M/G	1	2,050	2,818	MUSA LEILA	delegare 19.02.2021-19.04.2021 la lifturi
COMPARTIMENT DIABET ZAHARAT, NUTRITIE SI BOLI METABOLICE = 5 PATURI										
76	38	medic specialist	2		S	1	4,427	10,952	SASU MADALINA ELENA	
COMPARTIMENT REUMATOLOGIE = 5 PATURI										
77	39	medic primar	5	reumatologie	S	1	5,605	15,256	BELU GABRIELA LUMINITA	
COMPARTIMENT ENDOCRINOLOGIE = 5 PATURI										
78	40	medic specialist	3	endocrinologie	S	1	4,648	11,500	PISTOL MARIA CRISTINA	
COMPARTIMENT CARDIOLOGIE = 5 PATURI										
79	41	medic specialist	2	cardiologie	S	1	4,427	10,952	ONOFREI NICOLETA	
		TOTAL MEDICINA INTERNA				41	135,608	256,020		
SECTIA NEUROLOGIE = 45 PATURI										
80	1	medic sef sectie	5	neurologie	S	1	6,938	16,019	POST VACANT	Dr. Ghencea Mihaela numita cu delegatie
81	2	medic specialist	3	neurologie	S	1	4,648	11,500	GEORGESCU LUMINITA	angajata prin transfer de la SJU Slobozia
82	3	medic primar	5	neurologie	S	1	5,605	15,256	GHENCEA MIHAELA CATALINA	ocupa temporar functia de sef sectie
83	4	medic primar	5	neurologie	S	1	5,605	15,256	CHIRVASITU ION	

84	5	asistent medical principal	5	asistenta medicala generala	S	1	3,583	5,142	AGLITOIU DUMITRU EUGEN	contract suspendat - ocupa functia de manager
85	6	asistent medical principal sef	5	asistenta medicala generala	S	1	4,120	5,913	VORNICIUC ANGELICA	numita cu delegatie pe perioada suspendarii CIM - Aglitoiu Eugen
86	7	asistent medical principal	5	asistenta medicala generala	S	1	3,583	5,142	NISTOR ELENA MIHAELA	
87	8	asistent medical principal	4	medicina generala	PL	1	3,055	4,740	IONITA LILIANA	
88	9	asistent medical principal	5	medicina generala	PL	1	3,132	4,859	DABA ADRIANA GIANINA	
89	10	asistent medical principal	5	pediatrie	PL	1	3,132	4,859	IOFCEA NICOLETA CAMELIA	
90	11	asistent medical principal	5	medicina generala	PL	1	3,132	4,859	ISCRU GINA FELICIA	
91	12	asistent medical principal	5	medicina generala	PL	1	3,132	4,859	ISMAIL GULCIN	
92	13	asistent medical principal	5	pediatrie	PL	1	3,132	4,859	OSMAN GHIULNAZ	
93	14	asistent medical principal	5	pediatrie	PL	1	3,132	4,859	TILICA MIOARA	
94	15	asistent medical principal	5	pediatrie	PL	1	3,132	4,859	VASILE ELENA	
95	16	asistent medical principal	5	obstetrica ginecologie	PL	1	3,132	4,859	ZAHARIA MARINELA	
96	17	asistent medical principal	5	medicina generala	PL	1	3,132	4,859	MOTOC MONICA IULIA	
97	18	asistent medical principal	5	medicina generala	PL	1	3,132	4,859	PETEU LUMINITA	
98	19	asistent medical principal	5	medicina generala	PL	1	3,132	4,859	FRUNZA MARIANA	
99	20	asistent medical	5	medicina generala	PL	1	2,827	4,796	POST VACANT	demisie 01.12.2016
100	21	asistent medical	3	medicina generala	PL	1	2,690	4,564	SIRBU ANTONELA IULIANA	
101	22	asistent medical	4	medicina generala	PL	1	2,758	4,679	PANICHI GINA	
102	23	infirmiera	3		M/G	1	2,030	3,120	ANGHELESCU MARIANA	
103	24	infirmiera	baza		M/G	1	1,900	2,725	CIORACAI ELIS	
104	25	infirmiera	5		M/G	1	2,133	3,278	CRACIUN FLOAREA	
105	26	infirmiera	5		M/G	1	2,133	3,278	DATCU CARMEN LAURA	
106	27	infirmiera	3		M/G	1	2,030	3,120	CHITU LUMINITA	
107	28	infirmiera	5		M/G	1	2,133	3,278	MOGLAN LUCICA LIDIA	

108	29	infirmiera	5		M/G	1	2,133		3,278	MORARESCU ANISOARA	
109	30	infirmiera	5		M/G	1	2,133		3,278	PUSCASU MARIANA	
110	31	infirmiera	5		M/G	1	2,133		3,278	STAN ELENA	
111	32	infirmiera	4		M/G	1	2,080		3,198	SERPEGEAN FERUDA	
112	33	infirmiera	5		M/G	1	2,133		3,278	TILICA ELENA CHIVUTA	
113	34	infirmiera	3		M/G	1	2,030		3,120	VLAD DANIELA	
114	35	infirmiera	5		M/G	1	2,133		3,278	DIMA SOFIA	
115	36	ingrijitoare	3		M/G	1	2,000		2,749	COSTACHE SEVIDAN	
116	37	ingrijitoare	5		M/G	1	2,102		2,889	PRECUP VASILICA MIHAELA	
117	38	ingrijitoare	5		M/G	1	2,102		2,889	IFTODE LUMINITA FLORENTA	
		TOTAL NEUROLOGIE				38	113,202		196,490		

SECTIA CHIRURGIE GENERALA = 65 PATURI, DIN CARE: 5 PATURI ORL, 5 PATURI OFTALMOLOGIE, 15 PATURI ORTOPEDIE-TRAUMATOLOGIE

118	1	medic sef sectie	5	chirurgie generala	S	1	5,885	1,040	16,019	CARAIANE NICOLAE	numit cu delegatie incepand cu 27.10.2017
119	2	medic primar	3	chirurgie generala	S	1	5,335		14,520	IVANOSCHI ALEXANDRU	
120	3	medic primar	5	chirurgie generala	S	1	5,605		15,256	POST VACANT	
121	4	medic primar	5	chirurgie generala	S	1	5,605		15,256	POPESCU NICOLAE	
		COMP. OFTALMOLOGIE = 5 PATURI									
122	5	medic primar	3	oftalmologie	S	1	5,335		14,520	MOLDOVEANU ADRIAN	
		COMP. O.R.L. = 5 PATURI									
123	6	medic specialist	2	otorinolaringologie	S	1	4,427		10,952	STANCIU ALEX GEORGE	
		COMP. ORTOPEDIE-TRAUMAT. = 15 PATURI									
124	7	medic primar	5	ortopedie-traumatologie	S	1	5,605	1,040	15,256	COTOROS VICTOR	
125	8	asistent medical principal coordonator bloc operator	5	asistenta medicala generala	S	1	4,120		5,913	IORGA EUGENIA	
126	9	asistent medical principal	5	medicina generala	PL	1	3,132		4,859	VILCAN FANELIA	

127	10	asistent medical principal	5	medicina genera'	PL	1	3,132	4,859	ABLES MONICA	contract suspendat (CFP 03.03.2021-30.05.2021)
128	11	asistent medical principal	5	medicina generala	PL	1	3,132	4,859	POST VACANT	angajare temporara Curtip Seila si Timofte Cristina, 1/2 N
129	12	asistent medical principal	4	medicina generala	PL	1	3,055	4,740	CRACIUN CARMEN	sala de operatii
130	13	asistent medical principal	5	medicina generala	PL	1	3,132	4,859	CULEA VENETA	sala de operatii
131	14	asistent medical principal	5	medicina generala	PL	1	3,132	4,859	IBADULA ERSIN	sala de operatii
132	15	asistent medical principal	5	medicina generala	PL	1	3,132	4,859	MINDREANU SOFIA	sala de operatii
133	16	asistent medical principal	5	medicina generala	PL	1	3,132	4,859	VOINEA ELENA	sala de operatii
134	17	asistent medical principal	4	medicina generala	PL	1	3,055	4,740	GHEORGHITA VIOLETA	sala de operatii
135	18	asistent medical principal	5	medicina generala	PL	1	3,132	4,859	POPA EUGENIA LILIANA	sala de operatii
136	19	asistent medical principal	5	medicina generala	PL	1	3,132	4,859	PETCU MIOARA	
137	20	asistent medical principal	5	medicina generala	PL	1	3,132	4,859	CAZACIOC CORNELIA CORINA	
138	21	asistent medical principal	5	medicina generala	PL	1	3,132	4,859	RADULESCU MADALINA GABRIELA	
139	22	asistent medical principal	5	medicina generala	PL	1	3,132	4,859	IUSUF CAMEL	
140	23	asistent medical principal	5	medicina generala	PL	1	3,132	4,859	VASILCOIU RALUCA	
141	24	asistent medical principal	3	medicina generala	PL	1	2,982	4,624	BUTEA GEANINA CORINA	
142	25	asistent medical principal	3	medicina generala	PL	1	2,982	4,624	ASAN FISUN	
143	26	asistent medical principal	3	medicina generala	PL	1	2,982	4,624	VOICU ELENA	
144	27	asistent medical principal	5	medicina generala	PL	1	3,132	4,859	PANICHI ADRIANA	
145	28	asistent medical principal	4	medicina generala	PL	1	3,055	4,740	BUZATU ELENA	
146	29	asistent medical	4	medicina generala	PL	1	2,758	4,679	NETEJORU EMILIA	
147	30	infirmiera	5		M/G	1	2,133	3,278	CIJU RAINA	
148	31	infirmiera	3		M/G	1	2,030	3,120	CEAPA GEORGETA	
149	32	infirmiera	5		M/G	1	2,133	3,278	CONSTANTINESCU DUMITRA	

150	33	infirmiera	4		M/G	1	2,080		3,198	CURCA DANIELA	
151	34	infirmiera	3		M/G	1	2,030		3,120	STANCIU MARIANA	
152	35	infirmiera	5		M/G	1	2,133		3,278	MARALOI MARIANA	
153	36	infirmiera	5		M/G	1	2,133		3,278	SIRBU MARIANA	
154	37	infirmiera	3		M/G	1	2,030		3,120	DOGARU MARICICA	
155	38	infirmiera	3		M/G	1	2,030		3,120	MUNTEANU DANIELA	
156	39	infirmiera	2		M/G	1	1,933		2,971	RADUCANU LILIANA	
157	40	brancardier	3		M/G	1	2,167		2,862	POST VACANT	transformare post vacant de muncitor tr.I (lacatus mecanic)
158	41	ingrijitoare	3		M/G	1	2,000		2,749	AMET GHIULSEVEN	
159	42	ingrijitoare	5		M/G	1	2,102		2,889	BACUIANE DOINITA	
160	43	ingrijitoare	5		M/G	1	2,102		2,889	DIACONU VICTORITA	
161	44	ingrijitoare	2		M/G	1	1,905		2,618	NEAGU GIORGIANA ANI	sala de operatii
162	45	ingrijitoare	5		M/G	1	2,102		2,889	ZAHARIA DENISIA	
163	46	ingrijitoare	3		M/G	1	2,000		2,749	NICOLA GEORGETA ALEXANDRA	
		TOTAL CHIRURGIE GENERALA				46	141,677	2,080	259,895		
SECTIA OBSTETRICA-GINECOLOGIE = 50 PATURI											
164	1	medic sef sectie	5	obstetrica ginecologie	S	1	6,938	1,040	16,019	COCOS MIHAIL-LUCIAN	
165	2	medic primar	5	obstetrica ginecologie	S	1	5,605		15,256	PETRE AURELIEA	
166	3	medic primar	3	obstetrica ginecologie	S	1	5,335		14,520	TONA GIORGIS	
167	4	medic specialist	2	obstetrica ginecologie	S	1	4,427		10,952	OSMAN Kaidu	
168	5	asistent medical principal sef	4	generalist	PL	1	4,120		5,913	ITU NICOLETA	
169	6	moasa principala	5	moasa	S	1	3,583		5,142	BECHIR-ASIM ADRIANA	sala de nasteri
170	7	moasa principala	5	moasa	S	1	3,583		5,142	LAZAR ANISOARA	sala de nasteri

171	8	moasa principala	5	moasa	S	1	3,583	5,142	AGLITOIU ILENUTA	sala de nasteri
172	9	moasa principala	5	moasa	S	1	3,583	5,142	PASCU IONELA VIRGINICA	
173	10	moasa	2	moasa	S	1	2,704	4,539	OSMAN NALAN	sala de nasteri
174	11	moasa	2	moasa	S	1	2,704	4,539	BIRLIGEA AURA	sala de nasteri
175	12	asistent medical principal	5	asistenta medicala generala	S	1	3,583	5,142	ACORNICESEI GABRIELA	
176	13	asistent medical principal	4	medicina generala	SSD	1	3,227	4,801	POPICA VALENTINA	
177	14	asistent medical principal	5	obstetrica ginecologie	PL	1	3,132	4,859	IANCU LILIANA SIMONA	sala de nasteri
178	15	asistent medical principal	5	obstetrica ginecologie	PL	1	3,132	4,859	BUYUKMERIC MARIANA	sala de nasteri
179	16	asistent medical principal	5	obstetrica ginecologie	PL	1	3,132	4,859	POST VACANT	
180	17	asistent medical principal	5	obstetrica ginecologie	PL	1	3,132	4,859	RAMAZAN GIHANE	
181	18	asistent medical principal	5	obstetrica ginecologie	PL	1	3,132	4,859	VASILIU LUCIANA	
182	19	asistent medical principal	4	generalist	PL	1	3,055	4,740	ROPOTAN SIMONA ANCA	suspendare CIM cu 01.12.2020- conc.maternitate
183	20	asistent medical principal	5	generalist	PL	1	3,132	4,859	POPESCU LARISA ELENA	
184	21	asistent medical	3	medicina generala	PL	1	2,690	4,564	FIRUTA LUCICA	sala de operatii
185	22	infirmiera	5		M/G	1	2,133	3,278	DAN ELENA	
186	23	infirmiera	5		M/G	1	2,133	3,278	GHEORGHE MARIOARA	sala de nasteri
187	24	infirmiera	5		M/G	1	2,133	3,278	INAN NEGIVAN	sala de nasteri
188	25	infirmiera	5		M/G	1	2,133	3,278	NICHITA RODICA	sala de nasteri
189	26	infirmiera	5		M/G	1	2,133	3,278	MAZALU TASIA	sala de nasteri
190	27	infirmiera	5		M/G	1	2,133	3,278	MILITARU BEATRICE	sala de nasteri
191	28	infirmiera	5		M/G	1	2,133	3,278	INAN MIGDAL	
192	29	infirmiera	5		M/G	1	2,133	3,278	POST VACANT	pensionare cu 01.08.2020; Kircorian Crina angajata temporar
193	30	infirmiera	5		M/G	1	2,133	3,278	GEORGESCU ELENA	

194	31	infirmiera	4		M/G	1	2,080		3,198	ZALIN ADRIANA	
195	32	ingrijitoare	4		M/G	1	2,050		2,818	CRINGASU MARIANA	
196	33	ingrijitoare	4		M/G	1	2,050		2,818	DRAGAN MIRELA STELUTA	sala de nasteri
197	34	ingrijitoare	4		M/G	1	2,050		2,818	POPA STEFANIA ZINA	
198	35	ingrijitoare	1		M/G	1	1,900		2,536	ORASCU ANICA	
199	36	ingrijitoare	5		M/G	1	2,102		2,889	ROSIAN VIOLETA	delegare lifturi 15.02.2021 - 15.04.2021
		TOTAL OBSTETRICA-GINECOLOGIE				36	108,941	1,040	187,286		
SECTIA NEONATOLOGIE = 25 PATURI, DIN CARE: COMPARTIMENT PREMATURI = 4 PATURI											
200	1	medic sef sectie	5	neonatologie	S	1	5,128		12,688	POST VACANT	Oprea Magdalena numita sef sectie (01.06.2020-31.12.2020)
201	2	medic specialist	5	neonatologie	S	1	4,883		12,083	OPREA MAGDALENA	ocupa temporar functia de sef sectie
		medic rezident anul V	1	neonatologie	S		3,929		7,848	SIRBU MIHAELA	Rezidentiat pe post 2016 (Transferuri)
		medic rezident anul I	baza	neonatologie	S		2,482		5,700	POPESCU ANAMARIA	Rezidentiat pe post 2019 (Transferuri)
202	3	psiholog specialist	5	psihologie	S	1	4,001		6,351	NICHITA TAMARA	
203	4	asistent medical principal sef	5	medicina generala	PL	1	4,120		5,913	FRATILA LACRAMIOARA MARIANA	
204	5	asistent medical principal	5	medicina generala	PL	1	3,132		4,859	BUCHE NICULINA MIHAELA	
205	6	asistent medical principal	4	medicina generala	PL	1	3,055		4,740	HATIEGANU CORINA	
206	7	asistent medical principal	5	medicina generala	PL	1	3,132		4,859	ZAMFIR AURA	
207	8	asistent medical principal	5	medicina generala	PL	1	3,132		4,859	PUSCASU RODICA	
208	9	asistent medical principal	4	medicina generala	PL	1	3,055		4,740	LUNGU MIHAELA	
209	10	asistent medical principal	5	pediatrie	PL	1	3,132		4,859	DOBRA AIDA	
210	11	asistent medical principal	5	medicina generala	PL	1	3,132		4,859	NEACSU VALERICA	
211	12	asistent medical principal	5	medicina generala	PL	1	3,132		4,859	STANILA CARMEN NICOLETA	

212	13	asistent medical principal	5	medicina generala	PL	1	3,132	4,859	CIINEANU NICOLETA	
213	14	asistent medical	4	medicina generala	PL	1	2,758	4,679	TUDOR MIHAELA	
214	15	asistent medical	5	medicina generala	PL	1	2,827	4,796	GEMIL AISEL	
215	16	asistent medical	2	medicina generala	PL	1	2,563	4,346	GHENEA IRINA PAULA	
216	17	asistent medical	1	medicina generala	PL	1	2,440	4,139	POST VACANT	Ninov Irina angajata temporar; delegata la Lab.analize
217	18	asistent medical	4	medicina generala	PL	1	2,758	4,679	VRABIE CRISTINA VALENTINA	
218	19	asistent medical	2	medicina generala	PL	1	2,563	4,346	POST VACANT	Pusca Cristian Catalin si Simionescu Constantin angajati temporar cu 1/2 N
219	20	asistent medical	3	medicina generala	PL	1	2,690	4,564	PETROI DANIELA	
220	21	infirmiera	5		M/G	1	2,133	3,278	POST VACANT	incetare contract art.55 b la 06.04.2020; Daianu Ionela angajata temporar
221	22	infirmiera	5		M/G	1	2,133	3,278	MUSTATEA ANGELICA LILIANA	
222	23	infirmiera	3		M/G	1	2,030	3,120	JITARU ADINA	
223	24	infirmiera	5		M/G	1	2,133	3,278	MANASE MARGARETA CAMELIA	
224	25	infirmiera	5		M/G	1	2,133	3,278	MIHALACHE GEORGETA	
225	26	infirmiera	2		M/G	1	1,933	2,971	PANAIT AURELIA	
226	27	infirmiera	4		M/G	1	2,080	3,198	CHIREA MIHAELA	
227	28	ingrijitoare	5		M/G	1	2,102	2,889	POST VACANT	pensionare 20.11.2017
228	29	ingrijitoare	5		M/G	1	2,102	2,889	POST VACANT	angajare temporara Gazi Valentina si Popa Mariana Nicoleta; 1/2 N
		TOTAL NEONATOLOGIE				29	83,671	144,828		
SECTIA PEDIATRIE = 35 PATURI, DIN CARE: COMPARTIMENT RECUPERARE PEDIATRICA = 5 PATURI										
229	1	medic sef sectie	5	pediatrie	S	1	4,649	11,500	POST VACANT	Stancu Mirela numita sef sectie (01.06.2020-31.12.2020)

230	2	medic specialist	3	pediatrie	S	1	4,881	12,075	STANCU MIRELA	ocupa temporar functia de sef sectie
231	3	medic specialist	2	pediatrie	S	1	4,427	10,952	STAMATE ELISABETA SORINA	
232	4	medic specialist	2	pediatrie	S	1	4,427	10,952	CRACIUN ISABELLA CLAUDIA	
		medic rezident anul V	1	pediatrie	S		3,929	7,848	NEMELEAC FLORINA	Rezidentiat pe post 2016 (Transferuri)
233	5	asistent medical principal sef	3	generalist	PL	1	4,304	5,913	MEMET ADELA GEORGIANA	CIM suspendat- concediu medical
234		asistent medical principal sef sectie	4	generalist	PL	1	4,121	5,913	DODIS ELENA GABRIELA	numita cu delegatie asistent sef pe perioada suspendarii CIM al dnei Memet Adela
235	6	asistent medical principal	5	asistenta medicala generala	S	1	3,583	5,142	APOSTOL IANULA FRAGUTA	
236	7	asistent medical principal	5	asistenta medicala generala	S	1	3,583	5,142	PUNGA FLORICA	angajata prin transfer de la Spital Infectioase C-ta
237	8	asistent medical principal	2	asistenta medicala generala	PL	1	2,563	4,346	PUSCASU FLORENTINA	angajata prin transfer de la Spital Cernavoda
238	9	asistent medical principal	5	medicina generala	PL	1	3,132	4,859	POST VACANT	Raducan Alexandru si Apostol Aura angajati temporar cu 1/2 norma
239	10	asistent medical principal	5	pediatrie	PL	1	3,132	4,859	MENALI GHIULNET	
240	11	asistent medical principal	5	pediatrie	PL	1	3,132	4,859	POST VACANT	Preda Oana Georgiana si Munteanu Violeta angajate temporar; 1/2 N
241	12	asistent medical principal	5	medicina generala	PL	1	3,132	4,859	ANDRON GINA	
242	13	asistent medical principal	5	medicina generala	S	1	3,583	5,142	DETCOV MARIA	angajata prin transfer de la Spital Cernavoda
243	14	asistent medical principal	5	pediatrie	PL	1	3,132	4,859	RADU CAMELIA	
244	15	asistent medical principal	4	generalist	PL	1	3,055	4,740	CALIN GINA IULIANA	
245	17	asistent medical	2	medicina generala	PL	1	2,563	4,346	NICULAI ANTITA	
246	18	asistent medical	2	nutritie si dietetica	PL	1	2,563	4,346	BUSUIOC MIRELA	
247	19	infirmiera	5		M/G	1	2,133	3,278	CORHAN SOFICA	
248	20	infirmiera	5		M/G	1	2,133	3,278	GEORGESCU DOBRITA	
249	21	infirmiera	4		M/G	1	2,080	3,198	IRIDON CARMEN DACIANA	

250	22	infirmiera	5		M/G	1	2,133	3,278	IBRAM CAMER	recuperare pediatria
251	23	infirmiera	3		M/G	1	2,030	3,120	OPREA DANIELA	recuperare pediatria
252	24	infirmiera	5		M/G	1	2,133	3,278	OPREA VALINA	recuperare pediatria
253	25	infirmiera	5		M/G	1	2,133	3,278	PANTURU VASILICA	recuperare pediatria
254	26	infirmiera	3		M/G	1	2,030	3,120	MARES ELENA	recuperare pediatria
255	27	infirmiera	3		M/G	1	2,030	3,120	ION ELENA IULIA	
256	28	infirmiera	5		M/G	1	2,133	3,278	POST VACANT	incetare CIM cu art.55 b, la 15.04.2020
257	29	infirmiera	3		M/G	1	2,030	3,120	POST VACANT	Nitu Garofita si Peteu Elena Florentina angajate temporar cu 1/2 norma
258	30	ingrijitoare	4		M/G	1	2,050	2,818	STANCA LENUTA	
259	31	ingrijitoare	4		M/G	1	2,050	2,818	PETRE CRISTINA ELENA	
260	32	ingrijitoare	4		M/G	1	2,050	2,818	STANCIU MIHAELA	
261	33	ingrijitoare	3		M/G	1	2,000	2,749	MANASTIRE ELENA	
		TOTAL PEDIATRIE				33	99,039	169,201		
COMPARTIMENT DE PRIMIRE URGENTE										
262	1	medic specialist sef CPU	5	medicina de urgenta	S	1	6,875	13,814	BUSU STERE	
263	2	medic specialist	2	medicina de urgenta	S	1	5,278	11,924	FENZI SEVDAN	
264	3	medic specialist	4	medicina de urgenta	S	1	5,679	12,835	POST VACANT	transfer cu 17.06.2019 la SJU Tulcea
265	4	medic specialist	4	medicina de urgenta	S	1	5,679	12,835	POST VACANT	transfer cu 17.06.2019 la SJU Tulcea
266	5	medic specialist	2	pediatrie	S	1	5,278	11,924	POST VACANT	transformare post vacant de lacatus mecanic
267	6	medic	2	medicina de urgenta	S	1	3,978	8,241	BEJAN LARISA GABRIELA	
		medic rezident anul I	baza	medicina de urgenta	S		2,769	5,700	URECHE ELENA ANDREEA	rezidentiat pe post 2019 (Transferuri)
268	7	asistent medical principal sef	5	asistenta medicala generala	S	1	4,950	6,641	CHERA VETUTA MIHAELA	
269	8	asistent medical principal	4	asistenta medicala generala	S	1	4,199	5,634	DESPINOIU FLOAREA	

270	9	asistent medical principal	3	medicina genera'	SSD	1	3,594	5,171	BAETICA IONELA	
271	10	asistent medical principal	3	medicina generala	SSD	1	3,594	5,171	CINCU ANCA	
272	11	asistent medical principal	5	medicina generala	PL	1	3,699	5,184	CORBU MIHAELA	
273	12	asistent medical principal	5	medicina generala	PL	1	3,699	5,184	LIPAN CARMEN	
274	13	asistent medical principal	3	generalist	PL	1	3,520	4,933	LADARU BEATRICE	
275	14	asistent medical principal	3	medicina generala	PL	1	3,520	4,933	MINCA CRISTINA ELENA	
276	15	asistent medical principal	5	medicina generala	PL	1	3,699	5,184	GONGEA STELUTA DANIELA	
277	16	asistent medical	5	asistenta medicala generală	PL	1	3,334	4,985	HAGISUNA SEVIDAN	
278	17	asistent medical	5	medicina generala	PL	1	3,334	4,985	DINU ECATERINA	
279	18	asistent medical	5	medicina generala	PL	1	3,334	4,985	CIRSTEA GEORGETA	
280	19	asistent medical	2	medicina generala	PL	1	3,023	4,518	BELU CRISTINA	
281	20	asistent medical	2	medicina generala	PL	1	3,023	4,518	CARSTESCU ALINA NICOLETA	
282	21	asistent medical	2	medicina generala	PL	1	3,023	4,518	TRIFU RODICA GEORGETA	suspendare CIM - crestere copil (01.11.2020- 17.08.2022)
283	22	asistent medical	2	medicina generala	PL	1	3,023	4,518	MENABIT MIRELA CATALINA	
284	23	asistent medical	1	medicina generala	PL	1	2,879	4,302	PLETEA TEODORA ELENA	
285	24	asistent medical	3	medicina generala	PL	1	3,174	4,744	DAMIAN MARIA	
286	25	registrator medical principal	5		M	1	2,902	3,944	MOROIANU MIHAELA	
287	26	registrator medical principal	5		M	1	2,902	3,944	BALOI AIDA	
288	27	registrator medical principal	2		M	1	2,630	3,574	FUNDA AURA	
289	28	registrator medical	2		M	1	2,414	3,406	MINCA IOANA	
290	29	registrator medical	4		M	1	2,599	3,667	BADEA AURELIA RALUCA	
291	30	registrator medical	5		M	1	2,664	3,759	PANA CERASELA	transformare post de telefonista
292	31	brancardier	3		M/G	1	2,167	2,862	STEFANESCU COSMIN IULIAN	

293	32	brancardier	3		M/G	1	2,167		2,862	CIOTARNEL IONUT	
294	33	brancardier	5		M/G	1	2,275		3,007	IONITA MARIAN	
295	34	brancardier	5		M/G	1	2,275		3,007	GEMIL CHENAN	
296	35	brancardier	3		M/G	1	2,167		2,862	STEFAN IONUT	angajat prin transfer de la SCJU Constanta
297	36	brancardier	5		M/G	1	2,275		3,007	MANZAT GIGI	
298	37	brancardier	4		M/G	1	2,220		2,933	PURICE FLORIN DAN	
299	38	brancardier	5		M/G	1	2,275		3,007	ABLACHIM EMIN	angajat prin transfer de la SCJU Constanta
300	39	infirmiera	3		M/G	1	2,199		3,240	CURT-VELI SEVIDAN	
301	40	infirmiera	3		M/G	1	2,199		3,240	MEMEDULA DALIDA	
302	41	infirmiera	5		M/G	1	2,310		3,404	MITEA MARIANA	
303	42	infirmiera	5		M/G	1	2,310		3,404	POST VACANT	Ungureanu Vasilica angajata temporar
304	43	infirmiera	3		M/G	1	2,199		3,240	VRABIE ELENA	
305	44	infirmiera	4		M/G	1	2,254		3,321	NICOLAE TAMARA	
306	45	infirmiera	4		M/G	1	2,254		3,321	PETCU FLORINA	
307	46	infirmiera	3		M/G	1	2,199		3,240	MIHAILA NICOLETA CLAUDIA	
308	47	ingrijitoare	3		M/G	1	2,167		2,862	MINZAT NICOLETA	
309	48	ingrijitoare	3		M/G	1	2,167		2,862	TOMA GEORGETA	
310	49	ingrijitoare	4		M/G	1	2,220		2,933	MOCANU ELENA YZABELA	
311	50	ingrijitoare	5		M/G	1	2,275		3,007	CONSTANTIN ELENA	
312	51	ingrijitoare	3		M/G	1	2,167		2,862	LUCHIAN NICOLETA	
		TOTAL C.P.U.				51	161,009		254,158		
FARMACIE - SPITAL											
313	1	farmacist sef	grad I	farmacie	S	1	6,026		8,717	BOGDAN MIRELA	
314	2	farmacist specialist	5	farmacie	S	1	4,883		7,799	PARASCHIV CRISTINA	
315	3	asistent medical	3	farmacie	PL	1	2,690		4,564	ROMANIUC IULIANA IRINA	

316	4	asistent medical principal	5	farmacie	PL	1	3,132	4,859	POST VACANT	pensionare 03.03.2020
317	5	asistent medical principal	3	farmacie	PL	1	2,982	4,624	MINCA RALUCA	
318	6	asistent medical principal	4	farmacie	PL	1	3,055	4,740	NOVAC MADALINA	
319	7	asistent medical	3	farmacie	PL	1	2,690	4,564	ATOMEI MIRELA	
		TOTAL FARMACIE				7	25,458	39,867		
LABORATOR RECUPERARE, MEDICINA FIZICA SI BALNEOLOGIE										
320	1	medic specialist	2	balneofizioterapie	S	1	4,427	10,952	CONSTANTIN ALINA	
321	2	kinetoterapeut	3	kinetoterapie	S	1	2,875	5,910	MIRCESCU GEORGE DANIEL	schimbat temporar loc de munca la sectia Neurologie
322	4	kinetoterapeut	2	kinetoterapie	S	1	2,739	5,628	POST VACANT	pensionare 01.10.2020; Draghici Valentin angajat temporar cu norma intreaga
323	3	asistent medical principal	5	balneofizioterapie	PL	1	3,132	5,913	BOBIRNAC ADRIANA SONIA	
324	5	asistent medical principal	5	balneofizioterapie	PL	1	3,219	4,859	HODOROGEA ELENA	
325	6	asistent medical principal	5	balneofizioterapie	PL	1	3,132	4,859	MIRCEA MARIA AURICA	
326	7	asistent medical principal	5	balneofizioterapie	PL	1	3,132	4,859	POST VACANT	pensionare 23.01.2018
327	8	asistent medical principal	5	balneofizioterapie	PL	1	3,132	4,859	DUMITRU MARIANA	
328	9	asistent medical principal	5	balneofizioterapie	PL	1	3,132	4,859	SAULEA TATIANA	
329	10	infirmiera	3		M/G	1	2,030	3,120	MANOLEA RODICA	delegare 18.02.2021- 18.04.2021 la Medicina interna
330	11	infirmiera	4		M/G	1	2,080	3,198	HINZA CAMELIA	schimbare temporara loc de munca la Medicina interna
		TOTAL LABORATOR				11	33,030	59,016		
LABORATOR ANATOMIE PATOLOGICA										
331	1	medic primar - coordonator laborator	3	anatomie patologica	S	1	9,440	20,224	CORICI PAUL DANIEL	

332	2	medic primar	3	anatomie patolo	S	1	11,238	9,261	SHANAZO-STANISICI JADRANKA	
333	3	asistent medical principal coordonator	5	laborator	PL	1	6,162	8,092	FRANCU VALENTINA	
334	4	asistent medical principal	5	laborator	PL	1	6,317	6,317	GHEORGHE NICOLETA IULIANA	
335	5	asistent medical	4	laborator - necropsii	G	1	5,763	5,925	STANCIU EMILIAN	
336	6	ingrijitor	5		G	1	3,230	4,004	MERMAMBET IALCIN	
		TOTAL LABORATOR				6	32,710	43,599		
LABORATOR ANALIZE MEDICALE										
337	1	biolog sef laborator	3	biochimie medicala, imunologie clinica si managementul calitatii in laboratorul medical	S	1	4,431	7,382	POST VACANT	Dinca Emilia Florentina numita cu delegatie 6 luni (01.01.2021-30.06.2021)
338	2	medic primar	3	medicina de laborator	S	1	5,335	14,520	POST VACANT	Vasilii Dana angajata temporar
339	3	medic specialist	2	medicina de laborator	S	1	4,427	10,952	POST VACANT	Voinea Alexandra angajata temporar
340	4	farmacist	4	farmacie generala	S	1	3,594	6,406	POST VACANT	Ungureanu Cornelia angajata temporar 1/2
341	5	biolog medical principal	3	biochimie medicala	S	1	4,122	6,867	POST VACANT	Dinca Emilia Florentina ocupa functia de biolog sef
342	6	biolog medical specialist	2	biologie medicala	S	1	3,297	5,756	POST VACANT	Dragoi Stefana Iuliana angajata temporar
343	7	biolog	5	biologie	S	1	3,333	5,978	POST VACANT	Tudor Madalina Nicoleta angajata temporar
344	8	biolog	2	biologie	S	1	3,022	5,418	POST VACANT	Moldoveanu Florentina angajata temporar
345	9	biolog	2	biologie	S	1	3,022	5,418	POST VACANT	Marin Florentina angajata temporar
346	10	biolog	3	biologie	S	1	3,172	5,689	POST VACANT	transformare post vacant chimist
347	11	asistent medical	2	laborator	S	1	2,704	4,539	POST VACANT	Stroia Cristina angajata temporar
348	12	asistent medical principal	5	laborator	PL	1	3,132	4,859	POST VACANT	Brehuescu Doinita angajata temporar
349	13	asistent medical principal	5	laborator	PL	1	4,121	5,913	POST VACANT	Culea Silvia angajata temporar
350	14	asistent medical principal	5	laborator	PL	1	3,132	4,859	POST VACANT	Raduti Rodica angajata temporar
351	15	asistent medical principal	5	laborator	PL	1	3,132	4,859	POST VACANT	

352	16	asistent medical principal sef	5	laborator	PL	1	4,121	5,913	POST VACANT	Solomon Mirela angajata temporar
353	17	asistent medical	4	generalist	PL	1	2,758	4,679	POST VACANT	Marinescu Mihaela angajata temporar
354	18	registrator medical	5		M	1	2,505	3,557	POST VACANT	
355	19	ingrijitoare	5		M/G	1	2,102	2,889	POST VACANT	Uzun Lenuta angajata temporar
		TOTAL LABORATOR				19	65462	0	116453	
CABINET DIABET ZAHARAT, NUTRITIE SI BOLI METABOLICE										
356	1	medic specialist	2	diabet zaharat, nutritie si boli metabolice	S	1	4,427	10,952	POST VACANT	transfer la sectia Medicina interna-comp.diabet zaharat
357	2	asistent medical principal	4	generalist	PL	1	3,055	4,740	ENCICA CORNELIA	delegare 14.02.2021- 14.04.2021 la sectia Medicina interna
		TOTAL CABINET DIABET				2	7,482	15,692		
CABINET ONCOLOGIE MEDICALA										
358	1	medic specialist	2	oncologie medicala	S	1	4,427	10,952	POST VACANT	
		TOTAL CABINET ONCOLOGIE MEDICALA				1	4427	10952		
COMPARTIMENT DE SUPAVEGHERE, PREVENIRE SI LIMITARE A INFECTIILOR ASOCIATE ASISTENTEI MEDICALE										
359	1	medic specialist	2	epidemiologie	S	1	4,427	10,952	POST VACANT	demisie 14.11.2016
360	2	medic specialist	2	boli infectioase	S	1	4,427	10,952	POST VACANT	
361	3	asistent medical	2	generalist	PL	1	2,563	4,346	STRATULAT AURELIA	
		TOTAL C.P.C.I.N.				3	11,417	26,250		
STATIA DE STERILIZARE										
362	1	asistent medical principal	5	medicala	PL	1	3,132	4,859	POST VACANT	Bardu Rodica angajata temporar
363	2	asistent medical principal	5	generalist	PL	1	3,132	4,859	LUCA ELENA	
364	3	asistent medical principal	3	generalist	PL	1	2,982	4,624	POST VACANT	deces 01.12.2020; Ibram Sueda Sezen angajata temporar cu 1/2 norma
365	4	asistent medical principal	4	generalist	PL	1	3,055	4,740	MUSTATA FLORENTINA	
366	5	asistent medical	3	generalist	PL	1	2,690	4,564	SACHIR NESRIN	

367	6	tehnician aparatura medicala	5	aparatura medic	M	1	2,534	4,672	MOISE GABRIELA	
368	7	ingrijitoare	4		G	1	2,050	2,818	POST VACANT	demisie 01.10.2020
		TOTAL STERILIZARE				7	19,575	31,136		
COMP. STATISTICA										
369	1	statistician medical principal	4	statistica	M	1	2,488	3,523	MATEI VALENTINA	
370	2	registrator medical	2		M	1	2,270	3,224	CALIN ELENA	
COMP. INTERNARI										
371	1	registrator medical	2		M	1	2,414	3,406	POST VACANT	
372	2	registrator medical	5		M	1	2,505	3,557	GHICA LUMINITA	delegare la centrala telefonica (30.01.2021-30.03.2021)
373	3	garderobier	5		M	1	2,737	3,175	MAXIM NICULINA	
		TOTAL COMP. STATISTICA SI INTERNARI				5	12,414	12,414		
SPALATORIE										
374	1	spalatoreasa cu gestiune	3		M/G	1	2,050	2,818	OBERDINSCHI LUCICA ELENA	
375	2	spalatoreasa	baza		M/G	1	1,900	2,425	CHELUTA ALEXANDRA CRISTINA	
376	3	spalatoreasa	5		M/G	1	2,102	2,889	PURICE CONSTANTA	
377	4	spalatoreasa	5		M/G	1	2,102	2,889	LASZLO ANISOARA	
378	5	spalatoreasa	5		M/G	1	2,102	2,889	CAZACU RODICA	
379	6	spalatoreasa	5		M/G	1	2,102	2,889	IACOBESCU ELENA	
		TOTAL SPALATORIE				6	10,308	13,981		
BUCATARIE DIETETICA										
380	1	asistent medical principal	4	dietetica si nutritie	PL	1	3,055	4,740	CORNEA LUCIANA ROXANA	

APARAT FUNCTIONAL - TESA										
SERVICIUL DE MANAGEMENT AL CALITATII SERVICIILOR DE SANATATE										
381	1	Sef serviciu	5	managementul calitatii serviciilor de sanatate	S	1	5,265	5,908	POST VACANT	
382	2	Medic primar	5	managementul calitatii serviciilor de sanatate	S	1	5,605	15,256	POST VACANT	Minca Manuela angajata temporar 1/2 N
383	3	Referent de specialitate gradul III	3	managementul calitatii serviciilor de sanatate	S	1	2,707	3,827	POST VACANT	Dinca Emilia Florentina angajata temporar 1/2 N
384	4	Referent gradul II	5	managementul calitatii serviciilor de sanatate	S	1	2,440	3,556	POST VACANT	Stanescu Carmen Daniela angajata temporar 1/2 N
385	5	Referent de specialitate grad II	4	managementul calitatii serviciilor de sanatate	S	1	3,343	4,260	POST VACANT	Tudor Ramona Camelia angajata temporar
		TOTAL SERVICIU				5	14,095	26,899		
COMPARTIMENT JURIDIC										
386	1	consilier juridic IA	5	juridice	S	1	4,182	4,933	TEODORESCU LUCIA MONICA	
BIROU RUNOS										
387	1	economist IA - sef birou	grad II	economice	S	1	4,756	5,739	PELTEA MIRELA	
388	2	economist IA	5	economice	S	1	4,182	4,933	DRAGAN EMANUELA CAMELIA	
389	3	economist IA	5	economice	S	1	4,182	4,933	URSU VICA	
390	4	economist IA	5	economice	S	1	4,182	4,933	MUSAT GETA	
		TOTAL BIROU RUNOS				4	17,302	20,538		
BIROU FINANCIAR-CONTABILITATE										
391	1	economist IA - sef birou	grad II	economice	S	1	4,756	5,739	IACOB MARIA	numita cu delegatie (05.01.2021 - 04.07.2021)
392	2	economist IA	5	economice	S	1	4,182	4,933	STEFAN GEORGE LIVIU	CIM spendat 01.04.2019-31.03.2022 (director financiar-contabil)
393	3	economist IA	5	economice	S	1	4,182	4,933	ILIES FLORENTINA	

394	4	economist II	2	economice	S	1	2,578	3,645	APTI NARCIS-NADINA	contract suspendat - CCC (30.01.2020-11.11.2021); Vasile Mariana angajata temporar (26.02.2020-10.08.2021)
395	5	contabil IA	5	contabilitate	M	1	2,712	3,817	ANDRONACHE GHIULNAR	
		TOTAL BIROU FINANACIAR-				5	18,410	23,067		
BIROU ACHIZITII PUBLICE										
396	1	consilier juridic IA	5	economice	S	1	4,182	4,933	DINU ROXANA ELENA	
397	2	analist-programator grad I	2	informatica	S	1	3,105	3,981	FEDIUC GABRIELA	contract suspendat - CCC (23.11.2020 - 09.09.2022)
398	3	economist II	5	economice	S	1	3,128	4,423	CHIRIAC MARIANA	
		TOTAL COMP. ACHIZITII PUBLICE				3	10,415	13,337		
COMPARTIMENT INFORMATICA										
399	1	economist IA	4	economice	S	1	4,079	4,812	FILIMON IULIANA DIANA	
COMPARTIMENT SECURITATEA MUNCII, PSI, PROTECTIE CIVILA SI SITUATII DE URGENTA										
400	1	Economist IA	5	economice	S	1	4,182	4,933	NITU MARIAN	
		COMPARTIMENT AUDIT INTERN								
401	1	auditor grad 1	5	economic	S	1	4,373	4,781	POST VACANT	pensionare 02.05.2019
SERVICIUL APROVIZIONARE-ADMINISTRATIV-TRANSPORT-PAZA										
402	1	sef serviciu	grad II 5	tehnice	S	1	5,265	5,908	ISCRU MARIUS	
403	2	economist IA	5		S	1	4,182	4,933	OANCEA ELENA	
404	3	contabil IA	5	contabilitate	M	1	2,712	3,817	GIURGIU GINA	
405	4	referent tr. II	5		M	1	2440	3556	TOMA GETA	
406	5	arhivar	4		M	1	2,111	3,335	GUDA ELENA	
407	6	casier	5		M	1	2,164	3,418	MARCUTA DORINA	

408	7	secretar-dactilograf IA	3		M	1	2,282	3,453	NEGREA NICOLETA	
409	8	sofer II	5		M	1	2,335	3,504	SEITAMET EROL	delegare 14.02.2021-14.04.2021 la intretinere (statia oxigen)
410	9	sofer II	5		M	1	2,335	3,504	SNACOV VASILE	
411	10	portar	5		M/G	1	2,093	2,489	POST VACANT	pensionare 01.12.2017
412	11	portar	4		M/G	1	2,042	2,814	CURT-VELI ERGIAN	
413	12	portar	5		M/G	1	2,093	2,885	MENALI CETIN	
414	13	portar	5		M/G	1	2,093	2,885	SIRBU MIRCEA	
415	14	portar	5		M/G	1	2,093	2,885	ZAZU DUMITRU	
416	15	ingrijitoare	3		M/G	1	2,000	2,749	POST VACANT	Ghita Daria Adela angajata temporar
		TOTAL SERV.APROV., AD-TIV, TRANSP., PAZA				15	36,240	49,386		
COMPARTIMENT DE INTRETINERE-REPARATII CLADIRI										
417	1	MUNCITOR TR.I	4	electrician	M/G	1	2,384	3,532	ANGHEL PAUL DANIEL	
418	2	MUNCITOR TR.I	5	electrician	M/G	1	2,444	3,620	BARBU ION	delegare statia de oxigen (27.01.2021-27.03.2021)
419	3	MUNCITOR TR.III	5	instalator sanitar	M/G	1	2,148	3,270	DATCU STEFAN	
420	4	MUNCITOR TR.I	5	instalator sanitar	M/G	1	2,444	3,620	POST VACANT	deces 26.11.2016
421	5	MUNCITOR TR.I	5	lenjereasa	M/G	1	2,444	3,620	NEBI SAVER	
422	6	MUNCITOR TR.I	5	sudor	M/G	1	2,444	3,620	ENACHI MIHAI	
423	7	MUNCITOR TR.I	5	zidar	M/G	1	2,444	3,620	IOSIF TUDOREL	
424	8	MUNCITOR TR.I	5	zidar	M/G	1	2,444	3,620	PRODAN ION CONSTANTIN	
425	9	MUNCITOR TR.I	5	zugrav-vopsitor	M/G	1	2,444	3,620	SALI MEDET	delegare 01.03.2021-29.04.2021 la poarta
426	10	MUNCITOR TR.II	2	zidar-faiantar	M/G	1	2,074	3,260	REGEP AISUN	
427	11	MUNCITOR TR.I	5	fochist - sef formatie	M/G	1	2,506	3,711	POST VACANT	Ionascu Cornel angajat temporar
428	12	MUNCITOR TR.I	5	fochist	M/G	1	2,444	3,620	CHIVU GHEORGHE	centrala termica
429	13	MUNCITOR TR.I	5	fochist	M/G	1	2,444	3,620	COLESNICOV ALEXE	centrala termica
430	14	MUNCITOR TR.I	5	fochist	M/G	1	2,444	3,620	DATCU DANIEL	centrala termica
431	15	MUNCITOR TR.III	5	fochist	M/G	1	2,148	3,270	SALI SUNAI	centrala termica

432	16	MUNCITOR TR.I	5	lacatus mecanic	M/G	1	2,444		3,620	DAN IONEL DOREL	statia de oxigen
433	17	MUNCITOR TR.I	5	lacatus mecanic	M/G	1	2,444		3,620	NEGREA NICULAE	statia de oxigen
434	18	MUNCITOR TR.II	5	lacatus mecanic	M/G	1	2,179		3,426	POST VACANT	pensionare 01.02.2020; Negrea Valentin angajat temporar
435	19	MUNCITOR TR.II	5	lacatus mecanic	M/G	1	2,179		3,426	CRISTEA RICA	statia de oxigen
436	20	MUNCITOR TR.III	5	telefonista	M/G	1	2,148		3,270	SERBAN RADITA	centrala telefonica
437	21	MUNCITOR TR.III	5	telefonista	M/G	1	2,148		3,270	MARINEL ADRIANA	centrala telefonica
438	22	MUNCITOR TR.III	5	telefonista	M/G	1	2,148		3,270	PATEA MARIANA	centrala telefonica
439	23	MUNCITOR TR.IV	5	liftier	M/G	1	2,093		3,259	SCARLAT NICOLETA	lifturi
440	24	MUNCITOR TR.IV	3	liftier	M/G	1	1,992		3,101	PURCAREA MARCELA	lifturi
441	25	MUNCITOR TR.IV	5	liftier	M/G	1	2,093		3,259	NENCIU ANISOARA	lifturi
442	26	MUNCITOR TR.IV	5	liftier	M/G	1	2,093		3,259	GALBENAS NICOLETA LILIANA	lifturi
443	27	MUNCITOR TR.IV	5	liftier	M/G	1	2,093		3,259	POST VACANT	deces 13.10.2019
444	28	MUNCITOR TR.IV	5	liftier	M/G	1	2,093		3,259	MIHALACHE VIOLETA	lifturi
445	29	MUNCITOR NECALIFICAT TR.I	5		M/G	1	1,945		2,553	BENALI TAMER	delegare 21.01.2021- 21.03.2021 la poarta
446	30	MUNCITOR NECALIFICAT TR.I	3		M/G	1	1,900		2,454	MERMAMBET SERZGHIN	
447	31	MUNCITOR NECALIFICAT TR.I	3		M/G	1	1,900		2,454	POST VACANT	demisie 08.12.2019
448	32	MUNCITOR NECALIFICAT TR.I	5		M/G	1	1,945		2,553	SOCOTEANU MARIN	
		TOTAL COMP. INTRETINERE				32	71,537		106,555		
		TOTAL SPITAL				448	1,413,929	3,120	2,376,574		
		AMBULATORIU INTEGRAT									
CABINET CARDIOLOGIE											
449	1	medic specialist	2	cardiologie	S	1	4,427		10,952	POST VACANT	
CABINET NEFROLOGIE											
450	1	medic specialist	2	nefrologie	S	1	4,427		10,952	POST VACANT	
CABINET ORTOPEDIE SI TRAUMATOLOGIE											

451	1	medic specialist	2	ortopedie si tra atologie	S	1	4,427	10,952	POST VACANT	
CABINET UROLOGIE										
452	1	medic specialist	2	urologie	S	1	4,427	10,952	POST VACANT	
CABINET BOLI INFECTIOASE										
453	1	medic specialist	2	boli infectioase	S	1	4,427	10,952	POST VACANT	
CABINET PSIHIATRIE										
454	1	medic specialist	2	psihiatrie	S	1	4,427	10,952	POST VACANT	
CABINET DERMATOVENEROLOGIE										
455	1	medic specialist	2	dermatovenerologie	S	1	4,427	10,952	POST VACANT	
COMPARTIMENT ENDOSCOPIE DIGESTIVA										
456	1	medic specialist	2	gastroenterologie	S	1	4,427	10,952	POST VACANT	
LABORATOR RADIOLOGIE SI IMAGISTICA MEDICALA										
457	1	medic primar coordonator laborator	4	radiologie si imagistica medicala	S	1	5,469	15,627	SAMOILA CRISTINA	
458	2	medic specialist	2	radiologie si imagistica medicala	S	1	4,427	10,952	POST VACANT	Sahi Sukh Karan (angajat temporar cu norma intreaga)
459	3	medic specialist	2	radiologie si imagistica medicala	S	1	4,427	10,952	POST VACANT	Gherca Sabina angajata temporar cu 1/2 norma
		medic rezident anul IV	1	radiologie si imagistica medicala	S		3,929	7,848	TILIUTA LUIZA	rezidentiat noiembrie 2017
460	4	fizician medical	3	fizica	S	1	3,462	6,044	MIDISAN ALINA MARIA	
461	5	asistent medical principal	5	radiologie	PL	1	3,132	4,859	ABDULMENAN MELEC	
462	6	asistent medical principal coordonator	5	radiologie	PL	1	4,121	5,913	GIGA SICA	
463	7	asistent medical principal	5	radiologie-imagistica	PL	1	3,132	4,859	LUPASCU ELENA	
464	8	asistent medical principal	5	radiologie-imagistica	PL	1	3,132	4,859	OSMAN SEVGHIN	
465	9	asistent medical principal	4	radiologie-imagistica	PL	1	3,055	4,740	VLAD MADALINA ELENA	

466	10	asistent medical principal	4	radiologie-imagis	PL	1	3,055		4,740	OHANIAN IONELA MIRELA	
467	11	asistent medical principal	3	radiologie	PL	1	2,982		4,624	EPUREANU DANIELA AMALIA	
468	12	asistent medical	4	radiologie-imagistica	PL	1	2,758		4,679	BRANESCU MIHAELA	
469	13	asistent medical	3	radiologie-imagistica	PL	1	2,690		4,564	BOSTAN NINA	
470	14	asistent medical	2	radiologie-imagistica	PL	1	2,563		4,346	GEAUZAR SIBEL	
		TOTAL AMBULATORIU INTEGRAT				22	87,750	0	187,222		
		TOTAL SPITAL				448	1,413,425	3,120	2,373,289		
		TOTAL CJAS				470	1,501,175	3,120	2,560,511		

CAPITOLUL "TRANSFERURI" (BUGET DE STAT)

CABINET PLANIFICARE FAMILIALA											
1	1	medic primar	2	obstetrica-ginecologie	S	1	5,082		13,828	MOHAMMED BASHIR MADALAH MOHAMMED	
2	2	asistent medical principal	5	generalist	PL	1	3,132		4,859	IONESCU GEORGETA	
		TOTAL CAB.PLANIFICARE				2	8,214		18,687		
DISPENSAR T.B.C.											
3	1	medic primar	4	pneumologie	S	1	5,469	1,040	14,883	TRENCHIA MIHAELA	
4	2	asistent medical principal	5	generalist	PL	1	3,132		4,859	BARBULESCU GERONDA	
5	3	asistent medical principal	5	generalist	PL	1	3,132		4,859	MINCA VIORICA	
6	4	asistent medical principal	5	generalist	PL	1	3,132		4,859	POPA DANIELA GISELA	
7	5	asistent medical principal	5	generalist	PL	1	3,132		4,859	VLADUTA ELENA	
8	6	asistent medical principal	5	radiologie	PL	1	3,132		4,859	POST VACANT	demisie 01.05.2015
		TOTAL DISP. TBC				6	21129	1040	39178		
MEDICI REZIDENTI ANUL V											
9	1	MEDIC REZIDENT AN V	1	anestezie si terapie intensiva	S	1	3,788		7,848	POST VACANT	Transformare post vacant de lacatus mecanic

10	2	MEDIC REZIDENT AN V	1	pediatrie	S	1	3,929		7,848	NEMELEAC FLORINA	rezident pe post la sectia pediatrie; CIM suspendat - conc.maternitate cu 01.01.2021
11	3	MEDIC REZIDENT AN V	1	neonatologie	S	1	3,929		7,848	SIRBU MIHAELA	rezident pe post la sectia neonatologie
MEDICI REZIDENTI ANUL IV											
12	4	MEDIC REZIDENT AN IV	1	anestezie si terapie intensiva	S	1	3,788		7,848	BUTNAR ANDA CRISTINA	rezident pe post la sectia ATI; CIM suspendat (CFP 13.08.2020-31.12.2020)
13	5	MEDIC REZIDENT AN IV	1	radiologie si imagistica medicala	S	1	3,929		7,848	TILIUTA LUIZA	rezidentiat pe post la laborator radiologie
MEDICI REZIDENTI ANUL I											
14	6	MEDIC REZIDENT AN II	baza	anestezie si terapie intensiva	S	1	3,089		6,100	ILIE DANIELA	rezidentiat pe post decembrie 2019
15	7	MEDIC REZIDENT AN II	baza	neonatologie	S	1	2,764		6,100	POPESCU ANAMARIA	rezidentiat pe post decembrie 2020
16	8	MEDIC REZIDENT AN II	baza	medicina de urgenta	S	1	3,089		6,100	URECHE ELENA-ANDREEA	rezidentiat pe post decembrie 2021
TOTAL REZIDENTI						8	28,305		57,540		
TOTAL "TRANSFERURI"						16	57,648	1,040	115,405		
TOTAL CJAS						470	1,500,242	3,120	2,559,247		
TOTAL SPITAL						486	1,557,890	4,160	2,674,652		
MEDICI DIN AFARA UNITATII CARE PRESTEAZA ORE DE GARDA											
LINIA DE GARDA MEDICINA DE URGENTA											
1	1	MEDIC SPECIALIST	3	MF cu competenta in urgente prespitalicesti	S		5,542		5,542	SANDU VIOLETA	contract de munca cu timp partial pana la 31.12.2021
2	2	MEDIC SPECIALIST	5	MF cu competenta in urgente prespitalicesti	S		5,822		5,822	COCA GELU	contract de munca cu timp partial pana la 31.12.2021
LINIA DE GARDA OBSTETRICA GINECOLOGIE											
3	1	MEDIC PRIMAR	5				5,605		5,605	COCOS MIHAIL LUCIAN	contract de munca cu timp partial pana la 31.12.2021
LINIA DE GARDA ATI											
4	1	MEDIC PRIMAR	3	anestezie si terapie intensiva	S		7,123		7,123	CIOC ADRIAN DAN	contract de munca cu timp partial pana la 31.12.2021

5	2	MEDIC SPECIALIST	4	anestezie si terapi. intensiva	S		5,679	5,679	GROSU CRISTINA PETRUTA	contract de munca cu timp partial pana la 31.12.2021
6	3	MEDIC SPECIALIST	5	anestezie si terapie intensiva	S		5,822	5,822	SUCIU LAVINIA FLORINA	contract de munca cu timp partial pana la 31.12.2021
7	4	MEDIC SPECIALIST	3	anestezie si terapie intensiva	S		5,542	5,542	IOAN HARITON GABRIELA	contract de munca cu timp partial pana la 31.12.2021
8	5	MEDIC PRIMAR	5	anestezie si terapie intensiva	S		7,484	7,484	SAGAU ANCA MIHAELA	contract de munca cu timp partial pana la 31.12.2021
9	6	MEDIC SPECIALIST	2	anestezie si terapie intensiva	S		5,278	5,278	TABACARU ANDRA CRISTIANA	contract de munca cu timp partial pana la 31.12.2021
10	7	MEDIC PRIMAR	5	anestezie si terapie intensiva	S		7,484	7,484	BANCULESCU MIHAELA	contract de munca cu timp partial pana la 31.12.2021
11	8	MEDIC PRIMAR	3	anestezie si terapie intensiva	S		7,123	7,123	BALAN CORINA	contract de munca cu timp partial pana la 31.12.2021
12	9	MEDIC PRIMAR	4	anestezie si terapie intensiva	S		7,302	7,302	FUSTANELA ELENA	contract de munca cu timp partial pana la 31.12.2021
13	10	MEDIC PRIMAR	3	anestezie si terapie intensiva	S		7,123	7,123	BOSNAC NIDA	contract de munca cu timp partial pana la 31.12.2021
14	11	MEDIC SPECIALIST	2	anestezie si terapie intensiva	S		5,278	5,278	SALI FILIS	contract de munca cu timp partial pana la 31.12.2021
15	12	MEDIC SPECIALIST	2	anestezie si terapie intensiva	S		5,278	5,278	IOSIF DIANA	contract de munca cu timp partial pana la 31.12.2021
16	13	MEDIC REZIDENT	4	anestezie si terapie intensiva	S		4,282	4,281	MIREA LEONARD	contract de munca cu timp partial pana la 31.12.2021
		LINIA DE GARDA PEDIATRIE								
17	1	MEDIC PRIMAR	5	pediatrie	S		5,605	5,605	NICULESCU MIRCEA	contract de munca cu timp partial pana la 31.12.2021
18	2	MEDIC SPECIALIST	5	medicina de familie (facultatea de pediatrie)	S		4,883	4,883	COZMA ZAHARIA ALEXANDRU	contract de munca cu timp partial pana la 31.12.2021
		LINIA DE GARDA CHIRURGIE GENERALA								
19	1	MEDIC PRIMAR	5	chirurgie generala	S		5,605	5,605	MINCA MANUELA	contract de munca cu timp partial pana la 31.05.2021
20	2	MEDIC SPECIALIST	2	chirurgie generala	S		4,427	4,427	CHELARU ANDREI	contract de munca cu timp partial pana la 31.05.2021
21	3	MEDIC PRIMAR	4	chirurgie generala	S		5,469	5,469	FUSTANELA GHEORGHE	contract de munca cu timp partial, durata nedetermin.

MANAGER,
AGLITOIU DUMITRU EUGEN

DIRECTOR FINANCIAR-CONTABIL,
EC. STEFAN GEORGE LIVIU

SEF BIROU RUNOS,
EC. PELTEA MIRELA

