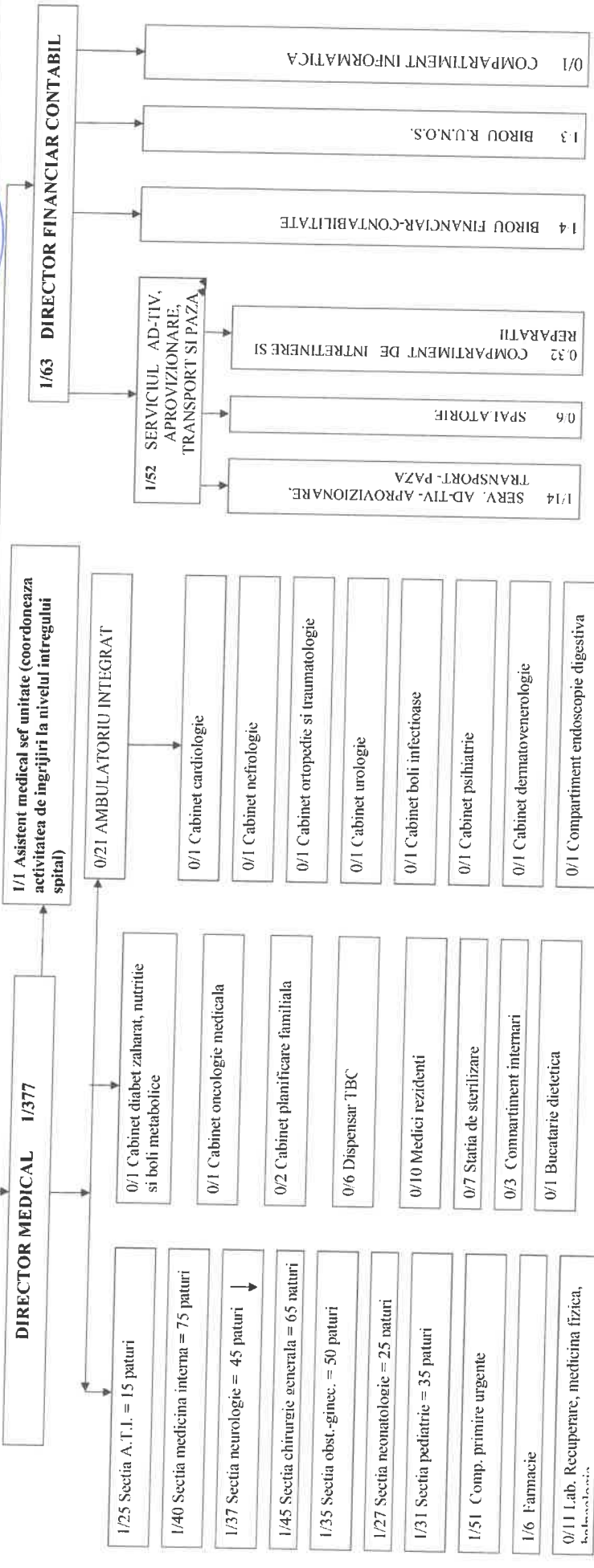
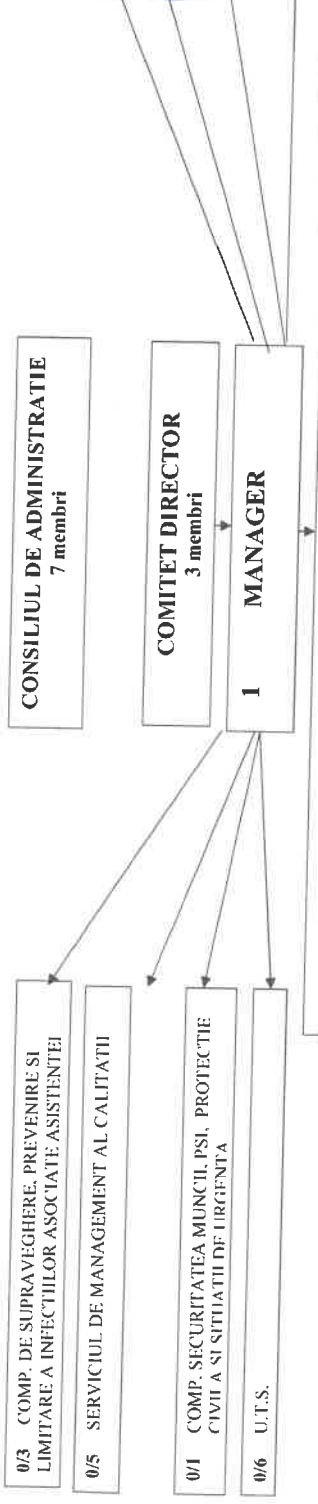
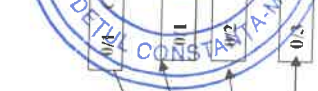


ORGANIGRAMA

AUREA LA HEL 30/31.03.2020

APROBAT,
PRIMAR
MARIE VALENTIN

PRIMARIA MUNICIPIULUI MEDGIDIA



LEGENDA

POSTURI APROBATE: 465, din care: - FNUASS = 447

din care: - medici = 55

- alt pers. san. super. = 5

- pers. san. mediu = 191

- pers. aux. sanitar = 126

- pers. TESA = 26

- pers. management = 5

- pers. paza = 5

- pers. intrtinere si deservire = 34

BUCGET DE STAT = 18

din care: - medic = 12

- pers. mediu san. = 6

Consiliul Local Medgidia Jud. Constanta
2
SPITALUL MUNICIPAL MEDGIDIA
S.O.J.

MANAGER,
GILITOIU DUMITRU-EUGEN

ANEXA LA HCL 31/31.03.2020

CONSILIUL LOCAL MEDGIDIA
 SPITALUL MUNICIPAL MEDGIDIA
 Str. Ion Creangă nr.18
 Tel./Fax: 0241810690/0241810931
 CUI: 4300752

NR. 4147 / 20.03.2020

APROBAT,
 PRIMĂRIA MUNICIPIULUI MEDGIDIA
 PRIMAR,
 VRABIE VALENTIN



STAT DE FUNCTII

NR. CRT	NR. CRT	FUNCTIA, GRADUL SAU TREAPTA PROFESIONALA CONFORM Legii nr. 153/2017	Grad/Gradația	SPECIALITATEA	NIVEL STU DII	CUAN TUM POST	SALARIUL DE BAZA LEGEA NR. 153/2017 31.12.2019	spor doctorat	SALARIUL DE BAZA LEGEA NR. 153/2017 01.03.2020	NATURA POSTULUI
0	0	1	2	3	4	5	6	7	8	9
		COMITET DIRECTOR - SPITAL - 310 DE PATURI								
1	1	Manager	grad II	asistenta medicala generala; master in managementul sanitar	S	1	8.125		16.800	POST OCUPAT
2	2	Director Medical	4	medic primar chirurgie generala	S	1	5.880		16.000	POST OCUPAT
3	3	Director financiar-contabil	grad II	studii economice	S	1	6.875		7.022	POST OCUPAT
		TOTAL COMITET DIRECTOR				3	20.880		39.822	
		ASISTENT MEDICAL SEF UNITATE								
4	1	Asistent medical sef unitate	grad II	medicina generala	PL	1	4.938		5.540	POST VACANT
5	1	Asistent social	baza	asistență socială	S	1	2.609		4.394	POST VACANT
		SECTIA ATI = 15 PATURI, DIN CARE: COMPARTIMENT PENTRU COPII = 4 PATURI								
6	1	medic sef sectie	5	ATI	S	1	7.858		17.442	POST VACANT
7	2	medic specialist coordonator sectie	3	ATI	S	1	5.542		13.147	POST OCUPAT
8	3	medic primar	5	ATI	S	1	7.484		16.611	POST OCUPAT
9	4	medic primar	5	ATI	S	1	7.484		16.611	POST OCUPAT
10	5	medic	2	ATI	S	1	3.978		8.241	POST OCUPAT
		medic specialist	2	ATI	S		5.278		11.924	POST VACANT
		medic rezident anul IV	1	ATI	S		3.788		7.848	POST OCUPAT
		medic rezident anul I	1	ATI	S		2.769		5.700	POST OCUPAT

11	6 asistent medical principal sef	5	icina generala	PL	1	4.304	6.641	POST OCUPAT
12	7 asistent medical principal	5	asistenta medicala generala	S	1	4.304	5.775	POST OCUPAT
13	8 asistent medical principal	5	asistenta medicala generala	S	1	4.304	5.775	POST OCUPAT
14	9 asistent medical principal	5	asistenta medicala generala	S	1	4.304	5.775	POST OCUPAT
15	10 asistent medical principal	4	medicina generala	SSD	1	3.684	5.301	POST OCUPAT
16	11 asistent medical principal	5	medicina generala	PL	1	3.699	5.184	POST OCUPAT
17	12 asistent medical principal	5	medicina generala	PL	1	3.699	5.184	POST OCUPAT
18	13 asistent medical principal	5	medicina generala	PL	1	3.699	5.184	POST OCUPAT
19	14 asistent medical principal	5	medicina generala	PL	1	3.699	5.184	POST OCUPAT
20	15 asistent medical principal	5	medicina generala	PL	1	3.699	5.184	POST OCUPAT
21	16 asistent medical principal	5	medicina generala	PL	1	3.699	5.184	POST OCUPAT
22	17 asistent medical principal	5	medicina generala	PL	1	3.699	5.184	POST OCUPAT
23	18 asistent medical principal	5	medicina generala	PL	1	3.699	5.184	POST OCUPAT
24	19 infirmiera	5	medicina generala	PL	1	3.699	5.184	POST VACANT
25	20 infirmiera	3		G	1	2.310	3.404	POST OCUPAT
26	21 infirmiera	3		G	1	2.199	3.240	POST OCUPAT
27	22 infirmiera	4		G	1	2.199	3.240	POST OCUPAT
28	23 infirmiera	5		G	1	2.254	3.321	POST OCUPAT
29	24 infirmiera	3		G	1	2.310	3.404	POST OCUPAT
30	25 ingrijitoare	3		G	1	2.199	3.240	POST OCUPAT
31	26 ingrijitoare	4		G	1	2.167	2.862	POST OCUPAT
	TOTAL ATI				26	2.275	3.007	POST OCUPAT
	UNITATE DE TRANSFUZII					112.586	193.981	
	SANGUINE							
32	1 medic primar coordonator	3	medicina de laborator	S	1	5.602	15.246	POST OCUPAT
33	2 asistent medical principal coordonator UTS	5	asistenta medicala generala	S	1	4.121	5.913	POST OCUPAT
34	3 asistent medical principal	5	asistenta medicala generala	S	1	3.583	5.142	POST OCUPAT
35	4 asistent medical principal	5	asistenta medicala generala	S	1	3.583	5.142	POST OCUPAT
36	5 asistent medical principal	5	medicina generala	PL	1	3.132	4.859	POST OCUPAT
37	6 asistent medical	4	medicina generala	PL	1	2.758	4.679	POST OCUPAT
	TOTAL U.T.S.				6	22.779	40.981	
	SECTIA MEDICINA INTERNA = 75 PATURI, DIN CARE:							
	- Comp.diabet zaharat, nutritie si boli metabolice=5 paturi, Comp.reumat=5 paturi, Comp.recup.,med.fiz., baln.=5 paturi, Comp.endocrinologie=5 paturi, Comp.cardio=5 paturi							
38	1 medic sef sectie	4	medicina interna	S	1	5.469	15.628	POST VACANT
39	2 medic primar	3	medicina interna	S	1	5.335	14.520	POST OCUPAT
40	3 medic primar	5	medicina interna	S	1	5.605	15.256	POST OCUPAT
41	4 medic primar	4	medicina interna	S	1	5.469	14.883	POST OCUPAT
42	5 medic primar	3	medicina interna	S	1	5.335	14.520	POST OCUPAT
43	6 asistent medical principal sef	5	medicina generala	PL	1	4.304	5.913	POST OCUPAT
44	7 asistent medical principal	5	medicina generala	PL	1	3.132	4.859	POST OCUPAT
45	8 asistent medical principal	4	asistenta medicala generala	S	1	3.497	5.016	POST OCUPAT
46	9 asistent medical principal	5	medicina generala	PL	1	3.132	4.859	POST OCUPAT

47	10	asistent medical principal	5	medicina generala	PL	1	3.132	4.859	POST OCUPAT	
48	11	asistent medical principal	5	medicina generala	PL	1	3.132	4.859	POST OCUPAT	
49	12	asistent medical principal	5	medicina generala	PL	1	3.132	4.859	POST OCUPAT	
50	13	asistent medical principal	5	medicina generala	PL	1	3.132	4.859	POST OCUPAT	
51	14	asistent medical principal	5	medicina generala	PL	1	3.132	4.859	POST OCUPAT	
52	15	asistent medical principal	5	medicina generala	PL	1	3.132	4.859	POST OCUPAT	
53	16	asistent medical principal	5	medicina generala	PL	1	3.132	4.859	POST OCUPAT	
54	17	asistent medical principal	5	medicina generala	PL	1	3.132	4.859	POST OCUPAT	
55	18	asistent medical principal	4	medicina generala	PL	1	3.132	4.859	POST OCUPAT	
56	19	asistent medical principal	3	medicina generala	PL	1	3.055	4.740	POST OCUPAT	
57	20	asistent medical principal	3	medicina generala	PL	1	2.982	4.624	POST OCUPAT	
58	21	asistent medical principal	4	medicina generala	PL	1	2.982	4.624	POST OCUPAT	
59	22	asistent medical principal	5	medicina generala	PL	1	3.055	4.740	POST OCUPAT	
60	23	asistent medical principal	4	medicina generala	PL	1	3.132	4.859	POST OCUPAT	
61	24	asistent medical debutant	baza	medicina generala	PL	1	3.055	4.740	POST OCUPAT	
62	25	infirmiera	2	medicina generala	PL	1	2.080	3.750	POST OCUPAT	
63	26	infirmiera	3		M/G	1	1.933	2.971	POST OCUPAT	
64	27	infirmiera	4		M/G	1	2.030	3.120	POST OCUPAT	
65	28	infirmiera	3		M/G	1	2.080	3.198	POST OCUPAT	
66	29	infirmiera	5		M/G	1	2.030	3.120	POST OCUPAT	
67	30	infirmiera	5		M/G	1	2.133	3.278	POST OCUPAT	
68	31	infirmiera	3		M/G	1	2.133	3.278	POST OCUPAT	
69	32	infirmiera	3		M/G	1	2.030	3.120	POST OCUPAT	
70	33	infirmiera	3		M/G	1	2.030	3.120	POST OCUPAT	
71	34	ingrijitoare	3		M/G	1	2.030	3.120	POST OCUPAT	
72	35	ingrijitoare	1		M/G	1	2.000	2.749	POST OCUPAT	
73	36	ingrijitoare	3		M/G	1	1.900	2.536	POST OCUPAT	
74	37	ingrijitoare	5		M/G	1	2.000	2.749	POST OCUPAT	
75	38	ingrijitoare	3		M/G	1	2.102	2.889	POST OCUPAT	
COMPARTIMENT REUMATOLOGIE = 5 PATURI										
76	39	medic primar	5	reumatologie	S	1	5.605	15.256	POST OCUPAT	
COMPARTIMENT ENDOCRINOLOGIE = 5 PATURI										
77	40	medic specialist	2	endocrinologie	S	1	4.427	10.952	POST OCUPAT	
COMPARTIMENT CARDIOLOGIE = 5 PATURI										
78	41	medic specialist	2	cardiologie	S	1	4.427	10.952	POST OCUPAT	
TOTAL MEDICINA INTERNA										
							41	129.565	245.560	
SECTIA NEUROLOGIE = 45 PATURI										
79	1	medic sef sectie	5	neurologie	S	1	6.938	16.019	POST VACANT	
80	2	medic specialist	3	neurologie	S	1	4.648	11.500	POST OCUPAT	
81	3	medic primar	5	neurologie	S	1	5.605	15.256	POST OCUPAT	
82	4	medic primar	5	neurologie	S	1	5.605	15.256	POST OCUPAT	
83	5	asistent medical principal	5	asistenta medicala generala	S	1	5.605	15.256	POST OCUPAT	
84	6	asistent medical principal sef	5	asistenta medicala generala	S	1	3.583	5.142	POST OCUPAT	
							1	4.120	5.913	POST OCUPAT

85	7 asistent medical principal	5	cliniere medicina generala	S	1	3.583	5.142	POST OCUPAT
86	8 asistent medical principal	4	medicina generala	PL	1	3.055	4.740	POST OCUPAT
87	9 asistent medical principal	5	medicina generala	PL	1	3.132	4.859	POST OCUPAT
88	10 asistent medical principal	5	pediatrie	PL	1	3.132	4.859	POST OCUPAT
89	11 asistent medical principal	5	medicina generala	PL	1	3.132	4.859	POST OCUPAT
90	12 asistent medical principal	5	medicina generala	PL	1	3.132	4.859	POST OCUPAT
91	13 asistent medical principal	5	pediatrie	PL	1	3.132	4.859	POST OCUPAT
92	14 asistent medical principal	5	pediatrie	PL	1	3.132	4.859	POST OCUPAT
93	15 asistent medical principal	5	pediatrie	PL	1	3.132	4.859	POST OCUPAT
94	16 asistent medical principal	5	pediatrie	PL	1	3.132	4.859	POST OCUPAT
95	17 asistent medical principal	5	obstetrica ginecologie	PL	1	3.132	4.859	POST OCUPAT
96	18 asistent medical principal	5	medicina generala	PL	1	3.132	4.859	POST OCUPAT
97	19 asistent medical principal	5	medicina generala	PL	1	3.132	4.859	POST OCUPAT
98	20 asistent medical	5	medicina generala	PL	1	3.132	4.859	POST OCUPAT
99	21 asistent medical	3	medicina generala	PL	1	2.827	4.796	POST VACANT
100	22 asistent medical	4	medicina generala	PL	1	2.690	4.564	POST OCUPAT
101	23 infirmiera	3	medicina generala	PL	1	2.758	4.679	POST OCUPAT
102	24 infirmiera	baza		M/G	1	2.030	3.120	POST OCUPAT
103	25 infirmiera	5		M/G	1	1.900	2.725	POST OCUPAT
104	26 infirmiera	5		M/G	1	2.133	3.278	POST OCUPAT
105	27 infirmiera	3		M/G	1	2.133	3.278	POST OCUPAT
106	28 infirmiera	5		M/G	1	2.030	3.120	POST OCUPAT
107	29 infirmiera	5		M/G	1	2.133	3.278	POST OCUPAT
108	30 infirmiera	5		M/G	1	2.133	3.278	POST OCUPAT
109	31 infirmiera	5		M/G	1	2.133	3.278	POST OCUPAT
110	32 infirmiera	4		M/G	1	2.133	3.278	POST OCUPAT
111	33 infirmiera	5		M/G	1	2.080	3.198	POST OCUPAT
112	34 infirmiera	3		M/G	1	2.133	3.278	POST OCUPAT
113	35 infirmiera	5		M/G	1	2.030	3.120	POST OCUPAT
114	36 ingrijitoare	2		M/G	1	2.133	3.278	POST OCUPAT
115	37 ingrijitoare	5		M/G	1	1.905	2.618	POST OCUPAT
116	38 ingrijitoare	5		M/G	1	2.102	2.889	POST OCUPAT
	TOTAL NEUROLOGIE			M/G	1	2.102	2.889	POST OCUPAT
					38	113.107	196.359	
SECTIA CHIRURGIE GENERALA = 65 PATURI, DIN CARE: 5 PATURI ORL, 5 PATURI OFTALMOLOGIE, 15 PATURI ORTOPEDIE-TRAUMATOLOGIE								
117	1 medic sef sectie	5	chirurgie generala	S	1	5.885	16.019	POST OCUPAT
118	2 medic primar	3	chirurgie generala	S	1	5.335	14.520	POST OCUPAT
119	3 medic primar	5	chirurgie generala	S	1	5.605	15.256	POST VACANT
120	4 medic primar	5	chirurgie generala	S	1	5.605	15.256	POST OCUPAT
	COMP. OFTALMOLOGIE = 5 PATURI							
121	5 medic primar	3	oftalmologie	S	1	5.335	14.520	POST OCUPAT
	COMP. O.R.L. = 5 PATURI							
122	6 medic specialist	1	otorinolaringologie	S	1	4.215	10.430	POST OCUPAT

COMP. ORTOPEDIE-TRAUMAT. = 15 PATURI													
123	7 medic primar	5											
124	8 asistent medical principal coordonator bloc operator	5	S	1	5.605	1.040	15.256	POST OCUPAT					
			S	1	4.120		5.913	POST OCUPAT					
125	9 asistent medical principal	5	PL	1	3.132		4.859	POST OCUPAT					
126	10 asistent medical principal	5	PL	1	3.132		4.859	POST OCUPAT					
127	11 asistent medical principal	5	PL	1	3.132		4.859	POST OCUPAT					
128	12 asistent medical principal	4	PL	1	3.055		4.740	POST OCUPAT					
129	13 asistent medical principal	5	PL	1	3.132		4.859	POST OCUPAT					
130	14 asistent medical principal	5	PL	1	3.132		4.859	POST OCUPAT					
131	15 asistent medical principal	5	PL	1	3.132		4.859	POST OCUPAT					
132	16 asistent medical principal	5	PL	1	3.132		4.859	POST OCUPAT					
133	17 asistent medical principal	4	PL	1	3.132		4.859	POST OCUPAT					
134	18 asistent medical principal	5	PL	1	3.055		4.740	POST OCUPAT					
135	19 asistent medical principal	5	PL	1	3.132		4.859	POST OCUPAT					
136	20 asistent medical principal	5	PL	1	3.132		4.859	POST OCUPAT					
137	21 asistent medical principal	5	PL	1	3.132		4.859	POST OCUPAT					
138	22 asistent medical principal	5	PL	1	3.132		4.859	POST OCUPAT					
139	23 asistent medical principal	5	PL	1	3.132		4.859	POST OCUPAT					
140	24 asistent medical principal	3	PL	1	3.132		4.859	POST OCUPAT					
141	25 asistent medical principal	3	PL	1	2.982		4.624	POST OCUPAT					
142	26 asistent medical principal	3	PL	1	2.982		4.624	POST OCUPAT					
143	27 asistent medical principal	5	PL	1	2.982		4.624	POST OCUPAT					
144	28 asistent medical principal	4	PL	1	3.132		4.859	POST OCUPAT					
145	29 asistent medical	4	PL	1	3.055		4.740	POST OCUPAT					
146	30 infirmiera	5	PL	1	2.758		4.679	POST OCUPAT					
147	31 infirmiera	3	M/G	1	2.133		3.278	POST OCUPAT					
148	32 infirmiera	5	M/G	1	2.030		3.120	POST OCUPAT					
149	33 infirmiera	4	M/G	1	2.133		3.278	POST OCUPAT					
150	34 infirmiera	3	M/G	1	2.080		3.198	POST OCUPAT					
151	35 infirmiera	5	M/G	1	2.030		3.120	POST OCUPAT					
152	36 infirmiera	5	M/G	1	2.133		3.278	POST OCUPAT					
153	37 infirmiera	3	M/G	1	2.133		3.278	POST OCUPAT					
154	38 infirmiera	3	M/G	1	2.030		3.120	POST OCUPAT					
155	39 infirmiera	2	M/G	1	2.030		3.120	POST OCUPAT					
156	40 brancardier	3	M/G	1	1.933		2.971	POST OCUPAT					
157	41 ingrijitoare	3	M/G	1	2.167		2.862	POST VACANT					
158	42 ingrijitoare	5	M/G	1	2.000		2.749	POST OCUPAT					
159	43 ingrijitoare	5	M/G	1	2.102		2.889	POST OCUPAT					
160	44 ingrijitoare	2	M/G	1	2.102		2.889	POST OCUPAT					
161	45 ingrijitoare	5	M/G	1	1.905		2.618	POST OCUPAT					
162	46 ingrijitoare	3	M/G	1	2.102		2.889	POST OCUPAT					
	TOTAL CHIRURGIE GENERALA			46	141.465	2.080	259.373						

SECTIA OBSTETRICIA-GINECOLOGIE = 50 PATURI													
163	1 medic sef sectie	5	obstetrica ginecologie										
164	2 medic primar	5	obstetrica ginecologie	S	1	6.938	1.040					16.019	POST OCUPAT
165	3 medic primar	3	obstetrica ginecologie	S	1	5.605						15.256	POST OCUPAT
166	4 medic specialist	2	obstetrica ginecologie	S	1	5.335						14.520	POST OCUPAT
167	5 asistent medical principal sef	4	generalist	S	1	4.427						10.952	POST OCUPAT
168	6 moasa principala	5	moasa	PL	1	4.120						5.913	POST OCUPAT
169	7 moasa principala	5	moasa	S	1	3.583						5.142	POST OCUPAT
170	8 moasa principala	5	moasa	S	1	3.583						5.142	POST OCUPAT
171	9 moasa principala	5	moasa	S	1	3.583						5.142	POST OCUPAT
172	10 moasa	2	moasa	S	1	3.583						5.142	POST OCUPAT
173	11 moasa	2	moasa	S	1	2.704						4.539	POST OCUPAT
174	12 asistent medical principal	5	asistenta medicala generala	S	1	2.704						4.539	POST OCUPAT
175	13 asistent medical principal	3	medicina generala	S	1	3.583						5.142	POST OCUPAT
176	14 asistent medical principal	5	obstetrica ginecologie	SSD	1	3.149						4.683	POST OCUPAT
177	15 asistent medical principal	5	obstetrica ginecologie	PL	1	3.132						4.859	POST OCUPAT
178	16 asistent medical principal	5	obstetrica ginecologie	PL	1	3.132						4.859	POST OCUPAT
179	17 asistent medical principal	5	obstetrica ginecologie	PL	1	3.132						4.859	POST OCUPAT
180	18 asistent medical principal	5	obstetrica ginecologie	PL	1	3.132						4.859	POST OCUPAT
181	19 asistent medical principal	3	generalist	PL	1	3.132						4.859	POST OCUPAT
182	20 asistent medical principal	5	generalist	PL	1	2.982						4.624	POST OCUPAT
183	21 asistent medical	3	medicina generala	PL	1	3.132						4.859	POST OCUPAT
184	22 infirmiera	5		PL	1	2.690						4.564	POST OCUPAT
185	23 infirmiera	5		M/G	1	2.133						3.278	POST OCUPAT
186	24 infirmiera	5		M/G	1	2.133						3.278	POST OCUPAT
187	25 infirmiera	5		M/G	1	2.133						3.278	POST OCUPAT
188	26 infirmiera	5		M/G	1	2.133						3.278	POST OCUPAT
189	27 infirmiera	5		M/G	1	2.133						3.278	POST OCUPAT
190	28 infirmiera	5		M/G	1	2.133						3.278	POST OCUPAT
191	29 infirmiera	5		M/G	1	2.133						3.278	POST OCUPAT
192	30 infirmiera	4		M/G	1	2.133						3.278	POST OCUPAT
193	31 infirmiera	5		M/G	1	2.080						3.198	POST OCUPAT
194	32 in grijitoare	4		M/G	1	2.133						3.278	POST OCUPAT
195	33 in grijitoare	3		M/G	1	2.050						2.818	POST OCUPAT
196	34 in grijitoare	3		M/G	1	2.000						2.749	POST OCUPAT
197	35 in grijitoare	1		M/G	1	2.000						2.749	POST OCUPAT
198	36 in grijitoare	4		M/G	1	1.900						2.536	POST OCUPAT
	TOTAL OBSTETRICIA-GINECOLOGIE				36	108.638	1.040					2.818	POST OCUPAT
												186.843	
SECTIA NEONATOLOGIE = 25 PATURI, DIN CARE: COMPARTIMENT PREMATURI = 4 PATURI													
199	1 medic sef sectie	5	neonatalogie	S	1	5.128						12.688	POST VACANT
200	2 medic specialist	5	neonatalogie	S	1	4.883						12.083	POST OCUPAT
	medic rezident anul IV	1	neonatalogie	S		3.929						7.848	POST OCUPAT

201	3 medic rezident anul I psiholog specialist	baza	psihologie	S	1	2.482	5.700	POST OCUPAT
202	4 asistent medical principal sef	5	medicina generala	S	1	4.001	4.603	POST OCUPAT
203	5 asistent medical principal	5	medicina generala	PL	1	4.120	5.913	POST OCUPAT
204	6 asistent medical principal	3	medicina generala	PL	1	3.132	4.859	POST OCUPAT
205	7 asistent medical principal	5	medicina generala	PL	1	2.982	4.624	POST OCUPAT
206	8 asistent medical principal	5	medicina generala	PL	1	3.132	4.859	POST OCUPAT
207	9 asistent medical principal	4	medicina generala	PL	1	3.132	4.859	POST OCUPAT
208	10 asistent medical principal	5	medicina generala	PL	1	3.055	4.740	POST OCUPAT
209	11 asistent medical principal	5	medicina generala	PL	1	3.132	4.859	POST OCUPAT
210	12 asistent medical principal	5	medicina generala	PL	1	3.132	4.859	POST OCUPAT
211	13 asistent medical principal	5	medicina generala	PL	1	3.132	4.859	POST OCUPAT
212	14 asistent medical	4	medicina generala	PL	1	3.132	4.859	POST OCUPAT
213	15 asistent medical	5	medicina generala	PL	1	2.758	4.679	POST OCUPAT
214	16 asistent medical	2	medicina generala	PL	1	2.827	4.796	POST OCUPAT
215	17 asistent medical	1	medicina generala	PL	1	2.563	4.346	POST OCUPAT
216	18 asistent medical	4	medicina generala	PL	1	2.440	4.139	POST VACANT
217	19 asistent medical	2	medicina generala	PL	1	2.758	4.679	POST OCUPAT
218	20 asistent medical	3	medicina generala	PL	1	2.563	4.346	POST VACANT
219	21 infirmiera	5		PL	1	2.690	4.564	POST OCUPAT
220	22 infirmiera	5		M/G	1	2.133	3.278	POST OCUPAT
221	23 infirmiera	3		M/G	1	2.133	3.278	POST OCUPAT
222	24 infirmiera	5		M/G	1	2.030	3.120	POST OCUPAT
223	25 infirmiera	5		M/G	1	2.133	3.278	POST OCUPAT
224	26 infirmiera	2		M/G	1	2.133	3.278	POST OCUPAT
225	27 ingrijitoare	5		M/G	1	1.933	2.971	POST OCUPAT
226	28 ingrijitoare	5		M/G	1	2.102	2.889	POST VACANT
				M/G	1	2.102	2.889	POST VACANT
	TOTAL NEONATOLOGIE				26	83.598	142.964	

	SECTIA PEDIATRIE = 35 PATURI, DIN CARE: COMPARTIMENT RECUPERARE PEDIATRICA = 5 PATURI							
227	1 medic sef sectie	5	pediatrie	S	1	4.649	11.500	POST VACANT
228	2 medic specialist	2	pediatrie	S	1	4.427	10.952	POST OCUPAT
229	3 medic specialist	2	pediatrie	S	1	4.427	10.952	POST OCUPAT
	medic rezident anul V	1	pediatrie	S		3.929	7.848	POST OCUPAT
	medic rezident anul IV	1	pediatrie	S		3.929	7.848	POST OCUPAT
230	4 asistent medical principal sef	3	generalist	PL	1	4.304	5.913	POST OCUPAT
231	5 asistent medical principal	5	asistenta medicala generala	S	1	3.583	5.142	POST OCUPAT
232	6 asistent medical principal	5	asistenta medicala generala	S	1	3.583	5.142	POST OCUPAT
233	7 asistent medical principal	2	asistenta medicala generala	PL	1	2.563	4.346	POST OCUPAT
234	8 asistent medical principal	5	medicina generala	PL	1	3.132	4.859	POST OCUPAT
235	9 asistent medical principal	5	pediatrie	PL	1	3.132	4.859	POST OCUPAT
236	10 asistent medical principal	5	pediatrie	PL	1	3.132	4.859	POST OCUPAT
237	11 asistent medical principal	5	medicina generala	PL	1	3.132	4.859	POST OCUPAT

238	12	asistent medical principal	5	Medicina generala	PL	1	3.132	4.859	POST OCUPAT
239	13	asistent medical principal	5	pediatrie	PL	1	3.132	4.859	POST OCUPAT
240	14	asistent medical principal	4	generalist	PL	1	3.055	4.740	POST OCUPAT
241	15	asistent medical principal	4	generalist	PL	1	3.055	4.740	POST OCUPAT
242	16	asistent medical	2	medicina generala	PL	1	2.563	4.346	POST OCUPAT
243	17	asistent medical	2	nutritie si dietetica	PL	1	2.563	4.346	POST OCUPAT
244	18	infirmiera	5		M/G	1	2.133	3.278	POST OCUPAT
245	19	infirmiera	5		M/G	1	2.133	3.278	POST OCUPAT
246	20	infirmiera	3		M/G	1	2.030	3.120	POST OCUPAT
247	21	infirmiera	5		M/G	1	2.133	3.278	POST OCUPAT
248	22	infirmiera	3		M/G	1	2.030	3.120	POST OCUPAT
249	23	infirmiera	5		M/G	1	2.133	3.278	POST OCUPAT
250	24	infirmiera	5		M/G	1	2.133	3.278	POST OCUPAT
251	25	infirmiera	5		M/G	1	2.133	3.278	POST OCUPAT
252	26	infirmiera	3		M/G	1	2.030	3.120	POST OCUPAT
253	27	infirmiera	3		M/G	1	2.030	3.120	POST OCUPAT
254	28	infirmiera	3		M/G	1	2.030	3.120	POST OCUPAT
255	29	ingrijitoare	4		M/G	1	2.050	2.818	POST OCUPAT
256	30	ingrijitoare	3		M/G	1	2.000	2.749	POST OCUPAT
257	31	ingrijitoare	4		M/G	1	2.050	2.818	POST OCUPAT
258	32	ingrijitoare	3		M/G	1	2.000	2.749	POST OCUPAT
		TOTAL PEDIATRIE				32	96.470	163.371	
		COMPARTIMENT DE PRIMIRE URGENTE							
259	1	medic sef CPU	5	medicina de urgenta	S	1	6.875	13.814	POST OCUPAT
260	2	medic specialist	2	medicina de urgenta	S	1	5.278	11.924	POST OCUPAT
261	3	medic specialist	4	medicina de urgenta	S	1	5.679	12.835	POST VACANT
262	4	medic specialist	4	medicina de urgenta	S	1	5.679	12.835	POST VACANT
263	5	medic specialist	2	pediatrie	S	1	5.278	11.924	POST VACANT
264	6	medic	2	medicina de urgenta	S	1	3.978	8.241	POST OCUPAT
		medic rezident anul I	baza	medicina de urgenta	S				
265	7	asistent medical principal sef	5	asistenta medicala generala	S	1	2.769	5.700	POST OCUPAT
266	8	asistent medical principal	4	asistenta medicala generala	S	1	4.950	6.641	POST OCUPAT
267	9	asistent medical principal	3	medicina generala	SSD	1	4.199	5.634	POST OCUPAT
268	10	asistent medical principal	3	medicina generala	SSD	1	3.594	5.171	POST OCUPAT
269	11	asistent medical principal	5	medicina generala	PL	1	3.699	5.171	POST OCUPAT
270	12	asistent medical principal	5	medicina generala	PL	1	3.699	5.184	POST OCUPAT
271	13	asistent medical principal	5	medicina generala	PL	1	3.699	5.184	POST OCUPAT
272	14	asistent medical principal	3	generalist	PL	1	3.699	5.184	POST OCUPAT
273	15	asistent medical principal	3	medicina generala	PL	1	3.520	4.933	POST OCUPAT
274	16	asistent medical principal	5	medicina generala	PL	1	3.520	4.933	POST OCUPAT
275	17	asistent medical	4	asistenta medicala generala	PL	1	3.699	5.184	POST OCUPAT
276	18	asistent medical	5	medicina generala	PL	1	3.253	4.863	POST OCUPAT
277	19	asistent medical	4	medicina generala	PL	1	3.334	4.985	POST OCUPAT
							3.253	4.863	POST OCUPAT

278	20	asistent medical	2	Clinic generala	PL	1	3.023	4.518	POST OCUPAT
279	21	asistent medical	2	medicina generala	PL	1	3.023	4.518	POST OCUPAT
280	22	asistent medical	2	medicina generala	PL	1	3.023	4.518	POST OCUPAT
281	23	asistent medical	2	medicina generala	PL	1	3.023	4.518	POST OCUPAT
282	24	asistent medical	1	medicina generala	PL	1	2.879	4.302	POST OCUPAT
283	25	asistent medical	3	medicina generala	PL	1	3.174	4.744	POST OCUPAT
284	26	registrator medical principal	5		M	1	2.902	3.944	POST OCUPAT
285	27	registrator medical principal	5		M	1	2.902	3.944	POST OCUPAT
286	28	registrator medical principal	2		M	1	2.630	3.574	POST OCUPAT
287	29	registrator medical	3		M	1	2.535	3.577	POST VACANT
288	30	registrator medical	3		M	1	2.535	3.577	POST OCUPAT
289	31	registrator medical	5		M	1	2.664	3.759	POST OCUPAT
290	32	brancardier	3		M/G	1	2.167	2.862	POST OCUPAT
291	33	brancardier	3		M/G	1	2.167	2.862	POST OCUPAT
292	34	brancardier	5		M/G	1	2.275	3.007	POST OCUPAT
293	35	brancardier	5		M/G	1	2.275	3.007	POST OCUPAT
294	36	brancardier	1		M/G	1	1.965	2.595	POST OCUPAT
295	37	brancardier	5		M/G	1	2.275	3.007	POST OCUPAT
296	38	brancardier	4		M/G	1	2.275	2.933	POST OCUPAT
297	39	brancardier	5		M/G	1	2.275	3.007	POST OCUPAT
298	40	infirmiera	3		M/G	1	2.275	3.240	POST OCUPAT
299	41	infirmiera	3		M/G	1	2.199	3.240	POST OCUPAT
300	42	infirmiera	5		M/G	1	2.199	3.240	POST OCUPAT
301	43	infirmiera	5		M/G	1	2.310	3.404	POST OCUPAT
302	44	infirmiera	3		M/G	1	2.310	3.404	POST OCUPAT
303	45	infirmiera	4		M/G	1	2.199	3.240	POST OCUPAT
304	46	infirmiera	4		M/G	1	2.254	3.321	POST OCUPAT
305	47	infirmiera	3		M/G	1	2.254	3.321	POST OCUPAT
306	48	ingrijitoare	3		M/G	1	2.199	3.240	POST OCUPAT
307	49	ingrijitoare	3		M/G	1	2.167	2.862	POST OCUPAT
308	50	ingrijitoare	4		M/G	1	2.167	2.862	POST OCUPAT
309	51	ingrijitoare	5		M/G	1	2.220	2.933	POST OCUPAT
310	52	ingrijitoare	3		M/G	1	2.275	3.007	POST OCUPAT
		TOTAL C.P.U.				52	164.401	258.912	
FARMACIE - SPITAL									
311	1	farmacist sef	grad I	farmacie	S	1	6.026	6.529	POST OCUPAT
312	2	farmacist specialist	5	farmacie	S	1	4.883	5.586	POST OCUPAT
313	3	asistent medical	2	farmacie	PL	1	2.563	4.346	POST OCUPAT
314	4	asistent medical principal	5	farmacie	PL	1	3.132	4.859	POST VACANT
315	5	asistent medical principal	3	farmacie	PL	1	2.982	4.624	POST OCUPAT
316	6	asistent medical principal	4	farmacie	PL	1	3.055	4.740	POST OCUPAT
317	7	asistent medical	2	farmacie	PL	1	2.563	4.346	POST OCUPAT
		TOTAL FARMACIE				7	25.204	35.030	

LABORATOR RECUPERARE, MEDICINA FIZICA SI BALNEOLOGIE												
318	1 medic specialist	2	balneofizioterapie	S	1	4.427	10.952	POST OCUPAT				
319	2 kinetoterapeut	3	kinetoterapie	S	1	2.875	3.860	POST OCUPAT				
320	3 asistent medical principal	5	balneofizioterapie	PL	1	3.132	5.913	POST OCUPAT				
321	4 asistent medical principal	5	balneofizioterapie	PL	1	3.219	4.859	POST OCUPAT				
322	5 asistent medical principal	5	balneofizioterapie	PL	1	3.219	4.859	POST OCUPAT				
323	6 asistent medical principal	5	balneofizioterapie	PL	1	3.132	4.859	POST OCUPAT				
324	7 asistent medical principal	5	balneofizioterapie	PL	1	3.132	4.859	POST OCUPAT				
325	8 asistent medical principal	5	balneofizioterapie	PL	1	3.132	4.859	POST OCUPAT				
326	9 asistent medical principal	5	balneofizioterapie	PL	1	3.132	4.859	POST OCUPAT				
327	10 infirmiera	3		M/G	1	2.030	3.120	POST OCUPAT				
328	11 infirmiera	3		M/G	1	2.030	3.120	POST OCUPAT				
	TOTAL LABORATOR				11	33.460	56.119					
LABORATOR ANATOMIE PATOLOGICA												
329	1 medic primar	3	anatomie patologica	S	1	11.238	19.261	POST OCUPAT				
330	2 medic specialist - coordonator	3	anatomie patologica	S	1	8.410	16.018	POST OCUPAT				
331	3 asistent medical principal coordonator	5	laborator	PL	1	6.162	8.092	POST OCUPAT				
332	4 asistent medical principal	5	laborator	PL	1	6.317	6.317	POST OCUPAT				
333	5 asistent medical	3	laborator - necropsii	G	1	5.623	5.780	POST OCUPAT				
334	6 ingrijitor	5		G	1	3.230	4.004	POST OCUPAT				
	TOTAL LABORATOR				6	40.980	59.472					
CABINET DIABET ZAHARAT, NUTRITIE SI BOLI METABOLICE												
	medic rezident an IV	1	diabet zaharat, nutritie si boli metabolice	S		3.929	7.848	POST OCUPAT				
335	1 asistent medical principal	3	generalist	PL	1	2.982	4.624	POST OCUPAT				
	TOTAL CABINET DIABET				1	6.911	12.472					
CABINET ONCOLOGIE MEDICALA												
336	1 medic specialist	2	oncologie medicala	S	1	4.427	10.952	POST VACANT				
	TOTAL CABINET ONCOLOGIE MEDICALA				1	4427	10952					
COMPARTIMENT DE SUPAVEGHERE, PREVENIRE SI LIMITARE A INFECTIILOR ASOCIATE ASISTENTEI MEDICALE												
337	1 medic specialist	2	epidemiologie	S	1	4.427	10.952	POST VACANT				
338	2 medic specialist	2	boli infectioase	S	1	4.427	10.952	POST VACANT				
339	3 asistent medical	2	generalist	PL	1	2.563	4.346	POST OCUPAT				
	TOTAL C.P.C.I.N.				3	11.417	26.250					
STATIA DE STERILIZARE												

340	1 asistent medical principal	5	medicinala	PL	1	3.132	4.859	POST OCUPAT
341	2 asistent medical principal	5	generalist	PL	1	3.132	4.859	POST OCUPAT
342	3 asistent medical principal	3	generalist	PL	1	2.982	4.624	POST OCUPAT
343	4 asistent medical principal	4	generalist	PL	1	3.055	4.740	POST OCUPAT
344	5 asistent medical	3	generalist	PL	1	2.690	4.564	POST OCUPAT
345	6 tehnician aparatura medicala	5	aparatura medicala	M	1	2.534	4.672	POST OCUPAT
346	7 ingrijitoare	3		G	1	2.000	2.749	POST OCUPAT
	TOTAL STERILIZARE				7	19.525	31.067	
	COMP. STATISTICA							
347	1 statistician medical principal	4	statistica	M	1	2.488	3.523	POST OCUPAT
348	2 registror medical	2		M	1	2.270	3.224	POST OCUPAT
	COMP. INTERNARI							
349	1 registror medical	2		M	1	2.414	3.406	POST OCUPAT
350	2 registror medical	5		M	1	2.505	3.557	POST OCUPAT
351	3 garderobier	5		M	1	2.737	3.175	POST OCUPAT
	TOTAL COMP. STATISTICA SI INTERNARI				5	12.414	12.414	
	SPALATORIE							
352	1 spalatoarea	baza		M/G	1	1.900	2.425	POST OCUPAT
353	2 spalatoarea	5		M/G	1	2.102	2.889	POST OCUPAT
354	3 spalatoarea	5		M/G	1	2.102	2.889	POST OCUPAT
355	4 spalatoarea cu gestiune	3		M/G	1	2.050	2.818	POST OCUPAT
356	5 spalatoarea	5		M/G	1	2.102	2.889	POST OCUPAT
357	6 spalatoarea	5		M/G	1	2.102	2.889	POST OCUPAT
	TOTAL SPALATORIE				6	12.358	16.799	
	BUCATARIE DIETETICA							
358	1 asistent medical principal	4	dietetica si nutritie	PL	1	3.055	4.740	POST OCUPAT
	APARAT FUNCTIONAL - TESA							
	SERVICIU DE MANAGEMENT AL CALITATII							
359	1 Medic specialist	3	sanatate publica si management	S	1	4.648	11.500	POST VACANT
360	2 Biolog principal	3	managementul calitatii	S	1	4.122	4.831	POST OCUPAT
361	3 Economist Grad IA	3	economice	S	1	3.979	3.979	POST VACANT
362	4 Consilier juridic Grad IA	3	juridice	S	1	3.979	3.979	POST VACANT
363	5 Asistent medical principal	5	asistenta medicala generala	S	1	3.583	5.142	POST VACANT
	TOTAL SERVICIU				5	20.311	29.431	

COMPARTIMENT JURIDIC														
364	1 consilier juridic IA	4	Juridice		S	1	4.079			4.812	POST OCUPAT			
BIROU RUNOS														
365	1 economist IA - sef birou	grad II	economice		S	1	4.756			5.739	POST OCUPAT			
366	2 economist IA	5	economice		S	1	4.182			4.933	POST OCUPAT			
367	3 economist IA	5	economice		S	1	4.182			4.933	POST OCUPAT			
368	4 economist IA	5	economice		S	1	4.182			4.933	POST OCUPAT			
	TOTAL BIROU RUNOS					4	17.302			20.538				
BIROU FINANCIAR-CONTABILITATE														
369	1 economist IA - sef birou	grad II	economice		S	1	4.756			5.739	POST OCUPAT			
370	2 economist IA	5	economice		S	1	4.182			4.933	POST OCUPAT			
371	3 economist IA	4	economice		S	1	4.079			4.812	POST OCUPAT			
372	4 economist II	2	economice		S	1	2.578			3.645	POST OCUPAT			
373	5 contabil IA	5	contabilitate		M	1	2.712			3.817	POST OCUPAT			
	TOTAL BIROU FINANCIAR-CONTABILITATE					5	18.307			22.946				
BIROU ACHIZITII PUBLICE														
374	1 consilier juridic IA	5	economice		S	1	4.182			4.933	POST OCUPAT			
375	2 analist-programator grad I	2	informatica		S	1	3.105			3.981	POST OCUPAT			
376	3 economist II	5	economice		S	1	3.128			4.423	POST OCUPAT			
	TOTAL COMP. ACHIZITII PUBLICE					3	10.415			13.337				
COMPARTIMENT INFORMATICA														
377	1 economist I	4	economice		S	1	3.343			4.260	POST OCUPAT			
COMPARTIMENT SECURITATEA MUNCII, PSI, PROTECTIE CIVILA SI SITUATII DE URGENTA														
378	1 Economist IA	5	economice		S	1	4.182			4.933	POST OCUPAT			
COMPARTIMENT AUDIT INTERN														
379	1 auditor grad 1	5	economic		S	1	4.373			4.781	POST VACANT			
SERVICIUL APROVIZIONARE-ADMINISTRATIV-TRANSPORT-PAZA														
380	1 sef serviciu	grad II tehnice			S	1	5.265			5.908	POST OCUPAT			
381	2 economist I	5			S	1	3.427			4.367	POST OCUPAT			
382	3 contabil IA	5	contabilitate		M	1	2.712			3.817	POST OCUPAT			
383	4 referent tr. II	5			M	1	2440			3556	POST OCUPAT			
384	5 arhivar	4			M	1	2.111			3.335	POST OCUPAT			
385	6 casier	5			M	1	2.164			3.418	POST OCUPAT			
386	7 secretar-dactilograf IA	3			M	1	2.282			3.453	POST OCUPAT			

387	8 sofer II	5		M	1	2.335	3.504	POST OCUPAT
388	9 sofer II	5		M	1	2.335	3.504	POST OCUPAT
389	10 portar	5		M/G	1	2.093	2.489	POST VACANT
390	11 portar	4		M/G	1	2.042	2.814	POST OCUPAT
391	12 portar	5		M/G	1	2.093	2.885	POST OCUPAT
392	13 portar	5		M/G	1	2.093	2.885	POST OCUPAT
393	14 portar	5		M/G	1	2.093	2.885	POST OCUPAT
394	15 ingrijitoare	3		M/G	1	2.000	2.749	POST OCUPAT
	TOTAL SERV.APROV., AD-TIV, TRANSP., PAZA				14	35.485	48.820	
COMPARTIMENT DE INTRETINERE-REPARATII CLADIRI								
395	1 MUNCITOR TR.I	4	electrician	M/G	1	2.384	3.532	POST OCUPAT
396	2 MUNCITOR TR.I	5	electrician	M/G	1	2.444	3.620	POST OCUPAT
397	3 MUNCITOR TR.III	5	instalator sanitar	M/G	1	2.148	3.270	POST OCUPAT
398	4 MUNCITOR TR.I	5	instalator sanitar	M/G	1	2.444	3.620	POST VACANT
399	5 MUNCITOR TR.I	5	lenjereasa	M/G	1	2.444	3.620	POST OCUPAT
400	6 MUNCITOR TR.I	5	sudor	M/G	1	2.444	3.620	POST OCUPAT
401	7 MUNCITOR TR.I	5	zidar	M/G	1	2.444	3.620	POST OCUPAT
402	8 MUNCITOR TR.I	4	zidar	M/G	1	2.384	3.532	POST OCUPAT
403	9 MUNCITOR TR.I	5	zugrav-vo-psitor	M/G	1	2.444	3.620	POST OCUPAT
404	10 MUNCITOR TR.II	2	zidar-faianantar	M/G	1	2.074	3.260	POST OCUPAT
405	11 MUNCITOR TR.I	5	fochist - sef formatie	M/G	1	2.506	3.711	POST OCUPAT
406	12 MUNCITOR TR.I	5	fochist	M/G	1	2.444	3.620	POST OCUPAT
407	13 MUNCITOR TR.I	5	fochist	M/G	1	2.444	3.620	POST OCUPAT
408	14 MUNCITOR TR.I	5	fochist	M/G	1	2.444	3.620	POST OCUPAT
409	15 MUNCITOR TR.III	5	fochist	M/G	1	2.148	3.270	POST OCUPAT
410	16 MUNCITOR TR.I	5	lacatus mecanic	M/G	1	2.444	3.620	POST OCUPAT
411	17 MUNCITOR TR.I	5	lacatus mecanic	M/G	1	2.444	3.620	POST OCUPAT
412	18 MUNCITOR TR.II	5	lacatus mecanic	M/G	1	2.179	3.426	POST VACANT
413	19 MUNCITOR TR.II	5	lacatus mecanic	M/G	1	2.179	3.426	POST OCUPAT
414	20 MUNCITOR TR.III	5	telefonista	M/G	1	2.148	3.270	POST OCUPAT
415	21 MUNCITOR TR.III	5	telefonista	M/G	1	2.148	3.270	POST OCUPAT
416	22 MUNCITOR TR.III	5	telefonista	M/G	1	2.148	3.270	POST OCUPAT
417	23 MUNCITOR TR.IV	5	liftier	M/G	1	2.093	3.259	POST OCUPAT
418	24 MUNCITOR TR.IV	3	liftier	M/G	1	1.992	3.101	POST OCUPAT
419	25 MUNCITOR TR.IV	5	liftier	M/G	1	2.093	3.259	POST OCUPAT
420	26 MUNCITOR TR.IV	5	liftier	M/G	1	2.093	3.259	POST OCUPAT
421	27 MUNCITOR TR.IV	5	liftier	M/G	1	2.093	3.259	POST VACANT
422	28 MUNCITOR TR.IV	5	liftier	M/G	1	2.093	3.259	POST OCUPAT
423	29 MUNCITOR NECALIFICAT TR.I	5		M/G	1	1.945	2.553	POST OCUPAT
424	30 MUNCITOR NECALIFICAT TR.I	3		M/G	1	1.900	2.454	POST OCUPAT
425	31 MUNCITOR NECALIFICAT TR.I	3		M/G	1	1.900	2.454	POST VACANT
426	32 MUNCITOR NECALIFICAT TR.I	5		M/G	1	1.945	2.553	POST COUPAT

		TOTAL COMP. INTRETINERE						32	71.477		106.467
		TOTAL SPITAL						426	1.446.089	3.120	2.441.146
		AMBULATORIU INTEGRAT									
		CABINET CARDIOLOGIE									
		427	1 medic specialist	2	cardiologie			1	4.427		10.952 POST VACANT
		CABINET NEFROLOGIE									
		428	1 medic specialist	2	nefrologie			1	4.427		10.952 POST VACANT
		CABINET ORTOPEDIE SI TRAUMATOLOGIE									
		429	1 medic specialist	2	ortopedie si traumatologie			1	4.427		10.952 POST VACANT
		CABINET UROLOGIE									
		430	1 medic specialist	2	urologie			1	4.427		10.952 POST VACANT
		CABINET BOLI INFECTIOASE									
		431	1 medic specialist	2	boli infectioase			1	4.427		10.952 POST VACANT
		CABINET PSIHIATRIE									
		432	1 medic specialist	2	psihiatrie			1	4.427		10.952 POST VACANT
		CABINET DERMATOVENEROLOGIE									
		433	1 medic specialist	2	dermatovenerologie			1	4.427		10.952 POST VACANT
		COMPARTIMENT ENDOSCOPIE DIGESTIVA									
		434	1 medic specialist	2	gastroenterologie			1	4.427		10.952 POST VACANT
		LABORATOR RADIOLOGIE SI IMAGISTICA MEDICALA									
		435	1 medic primar coordonator laborator	4	radiologie si imagistica medicala			1	5.469		15.627 POST COUPAT
		436	2 medic specialist	2	radiologie si imagistica medicala			1	4.427		10.952 POST VACANT
			medic rezident anul III	baza	radiologie si imagistica medicala				3.069		6.700 POST OCUPAT
		437	3 fizician	3	fizica			1	3.172		3.957 POST OCUPAT
		438	4 asistent medical principal	5	radiologie			1	3.132		4.859 POST OCUPAT
		439	5 asistent medical principal coordonator	5	radiologie			1	4.121		5.913 POST OCUPAT
		440	6 asistent medical principal	5	radiologie-imagistica			1	3.132		4.859 POST OCUPAT
		441	7 asistent medical principal	5	radiologie-imagistica			1	3.132		4.859 POST OCUPAT
		442	8 asistent medical principal	3	radiologie-imagistica			1	2.982		4.624 POST OCUPAT

443	9 asistent medical principal	3	siologie-imagistica	PL	1	2.982	4.624	POST OCUPAT
444	10 asistent medical principal	3	radiologie	PL	1	2.982	4.624	POST OCUPAT
445	11 asistent medical	4	radiologie-imagistica	PL	1	2.758	4.679	POST OCUPAT
446	12 asistent medical	3	radiologie-imagistica	PL	1	2.690	4.564	POST OCUPAT
447	13 asistent medical	2	radiologie-imagistica	PL	1	2.563	4.346	POST OCUPAT
	TOTAL AMBULATORIU INTEGRAT				21	82.027	0	172.803
	TOTAL SPITAL				427	1.439.897	3.120	2.424.857
	TOTAL CJAS				448	1.521.924	3.120	2.597.660

CAPITOLUL "TRANSFERURI" (BUGET DE STAT)

CABINET PLANIFICARE FAMILIALA									
1	1 medic primar	2	obstetrica-ginecologie	S	1	5.082	13.828	POST OCUPAT	
2	2 asistent medical principal	5	generalist	PL	1	3.132	4.859	POST OCUPAT	
	TOTAL CAB.PLANIFICARE				2	8.214	18.687		
DISPENSAR T.B.C.									
3	1 medic primar	4	pneumologie	S	1	5.469	14.883	POST OCUPAT	
4	2 asistent medical principal	5	generalist	PL	1	3.132	4.859	POST OCUPAT	
5	3 asistent medical principal	5	generalist	PL	1	3.132	4.859	POST OCUPAT	
6	4 asistent medical principal	5	generalist	PL	1	3.132	4.859	POST OCUPAT	
7	5 asistent medical principal	5	generalist	PL	1	3.132	4.859	POST OCUPAT	
8	6 asistent medical principal	5	radiologie	PL	1	3.132	4.859	POST VACANT	
	TOTAL DISP. TBC				6	21129	1040	39178	
MEDICI REZIDENTI ANUL V									
9	1 MEDIC REZIDENT AN V	1	pediatrie	S	1	3.929	7.848	POST OCUPAT	
10	2 MEDIC REZIDENT AN V	1	anestezie si terapie intensiva	S	1	3.788	7.848	POST VACANT	
MEDICI REZIDENTI ANUL IV									
11	3 MEDIC REZIDENT AN V	1	anestezie si terapie intensiva	S	1	3.788	7.848	POST OCUPAT	
12	4 MEDIC REZIDENT AN IV	1	diabet zaharat, nutritie si boli metabolice	S	1	3.929	7.848	POST OCUPAT	
13	5 MEDIC REZIDENT AN IV	1	pediatrie	S	1	3.929	7.848	POST OCUPAT	
14	6 MEDIC REZIDENT AN IV	1	neonatalogie	S	1	3.929	7.848	POST OCUPAT	
MEDICI REZIDENTI ANUL III									
15	7 MEDIC REZIDENT AN III	baza	radiologie si imagistica medicala	S	1	3.069	6.700	POST OCUPAT	
MEDICI REZIDENTI ANUL I									

16	8	MEDIC REZIDENT AN I	baza	anestezie si terapie intensiva	S	1	2.769	5.700	POST OCUPAT
17	9	MEDIC REZIDENT AN I	baza	ginecologie	S	1	2.482	5.700	POST OCUPAT
18	10	MEDIC REZIDENT AN I	baza	medicina de urgenta	S	1	2.769	5.700	POST OCUPAT
		TOTAL REZIDENTI				10	34.381	70.888	
		TOTAL "TRANSFERURI"				17	63.724	1.040	
		TOTAL CJAS				448	1.521.924	3.120	2.597.660
		TOTAL SPITAL				465	1.585.648	4.160	2.726.413
		MEDICI DIN AFARA UNITATII CARE PRESTEAZA ORE DE GARDA							
		LINIA DE GARDA MEDICINA DE URGENTA							
1	1	MEDIC SPECIALIST	2	MF cu competenta in urgente prespitalicesi	S		5.278	5.278	CIM cu timp partial
2	2	MEDIC SPECIALIST	4	medicina de urgenta	S		5.679	5.679	CIM cu timp partial
3	3	MEDIC SPECIALIST	5	MF cu competenta in urgente prespitalicesi	S		5.822	5.822	CIM cu timp partial
		LINIA DE GARDA OBSTETRICA GINECOLOGIE							
4	1	MEDIC PRIMAR	5						
5	2	MEDIC SPECIALIST	baza	obstetrica-ginecologie	S		5.605	5.605	CIM cu timp partial
6	3	MEDIC SPECIALIST	2	obstetrica-ginecologie	S		3.922	3.922	CIM cu timp partial
7	4	MEDIC SPECIALIST	baza	obstetrica-ginecologie	S		4.427	4.427	CIM cu timp partial
8	5	MEDIC PRIMAR	5	obstetrica-ginecologie	S		3.922	3.922	CIM cu timp partial
		LINIA DE GARDA ATI							
9	1	MEDIC SPECIALIST	2	anestezie si terapie intensiva	S		5.278	5.278	CIM cu timp partial
10	2	MEDIC PRIMAR	5	anestezie si terapie intensiva	S		7.484	7.484	CIM cu timp partial
11	3	MEDIC PRIMAR	3	anestezie si terapie intensiva	S		7.123	7.123	CIM cu timp partial
		LINIA DE GARDA PEDIATRIE							
12	1	MEDIC PRIMAR	5	pediatrie	S		5.605	5.605	CIM cu timp partial
13	2	MEDIC SPECIALIST	5	medicina de familie (facultatea de pediatrie)	S		4.883	4.883	CIM cu timp partial
		LINIA DE GARDA MEDICINA INTERNA							
14	1	MEDIC PRIMAR	5	medicina interna	S		5.605	5.605	CIM cu timp partial
15	2	MEDIC PRIMAR	3	nefrologie	S		5.335	5.335	CIM cu timp partial
		LINIA DE GARDA CHIRURGIE GENERALA							
16	1	MEDIC SPECIALIST	4	chirurgie generala	S		4.764	4.764	CIM cu timp partial
17	2	MEDIC PRIMAR	5	chirurgie generala	S		5.605	5.605	CIM cu timp partial
18	3	MEDIC PRIMAR	5	chirurgie generala	S		5.605	5.605	CIM cu timp partial



MANAGER,
AGLITOIU DUMITRU EUGEN

DIRECTOR FINANCIAR-CONTABIL,
EC. STEFAN GEORGE LIVIU

SEF BIROU RUNOS,
EC. PELTEA MIRELA